



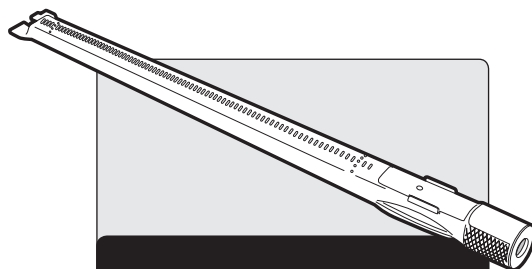
Summit®

BURNER TUBE REPLACEMENT INSTRUCTIONS

**THIS PROCEDURE SHOULD ONLY BE PERFORMED BY AN AUTHORIZED
WEBER-STEPHEN PRODUCTS LLC SERVICE TECHNICIAN**

⚠ WARNING: GENUINE WEBER-STEPHEN REPLACEMENT PARTS MUST BE USED FOR ANY REPAIR OR REPLACEMENT. YOUR ACTIONS, IF YOU FAIL TO FOLLOW THIS PRODUCT WARNING, MAY CAUSE A FIRE, AN EXPLOSION, OR STRUCTURAL FAILURE RESULTING IN SERIOUS PERSONAL INJURY OR DEATH AS WELL AS DAMAGE TO PROPERTY. (WILL VOID ALL WARRANTY PROTECTION.)


⚠ DANGER: BEFORE PERFORMING ANY WORK MAKE SURE THE GAS SUPPLY IS TURNED OFF AT THE SOURCE. FAILURE TO FOLLOW DANGERS, WARNINGS AND CAUTIONS CONTAINED IN THIS INSTRUCTION SHEET MAY CAUSE A FIRE OR AN EXPLOSION RESULTING IN SERIOUS PERSONAL INJURY OR DEATH AS WELL AS DAMAGE TO PROPERTY.



BURNER TUBE REPLACEMENT

⚠ BEFORE STARTING: Make sure lid is closed and casters are locked to prevent grill from moving.

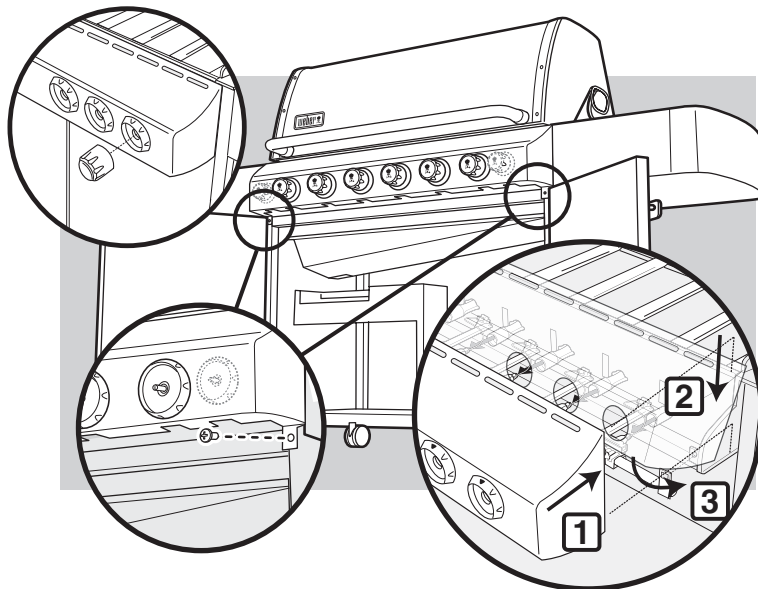
1 CONTROL PANEL REMOVAL

TOOLS NEEDED:  - PHILLIPS

Older Summit Models:

MAKE SURE ALL CONTROL KNOBS ARE SET TO THE "OFF" POSITION BEFORE STARTING TO REMOVE CONTROL PANEL.

- A)** Remove ALL of control knobs. (Not Pictured)
- B)** *Open both doors:* Remove two screws and washers from underside of control panel with a Phillips head screwdriver.
- C)** Gently pull bottom of control panel forward (1) at same time tilt (2) and lift (3) control panel off hanger brackets and away from grill assembly.



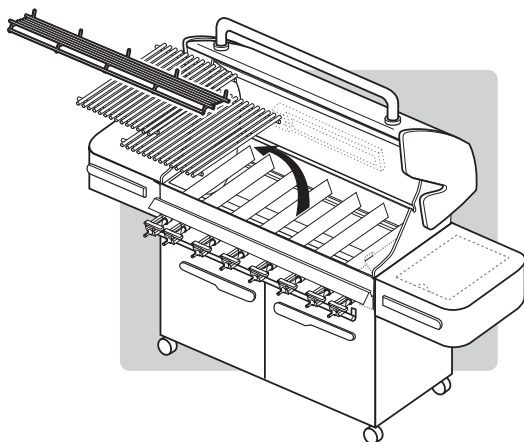
⚠ IMPORTANT: To do a proper leak check control panel must be removed. After checking for leaks replace control panel and control knobs.

NOTE: Grills illustrated may have slight differences than model purchased.

2

GRATE REMOVAL

- A) Remove cooking grates and Flavorizer® bars.
 B) Remove smoker box, rotisserie shaft and forks (not pictured.)



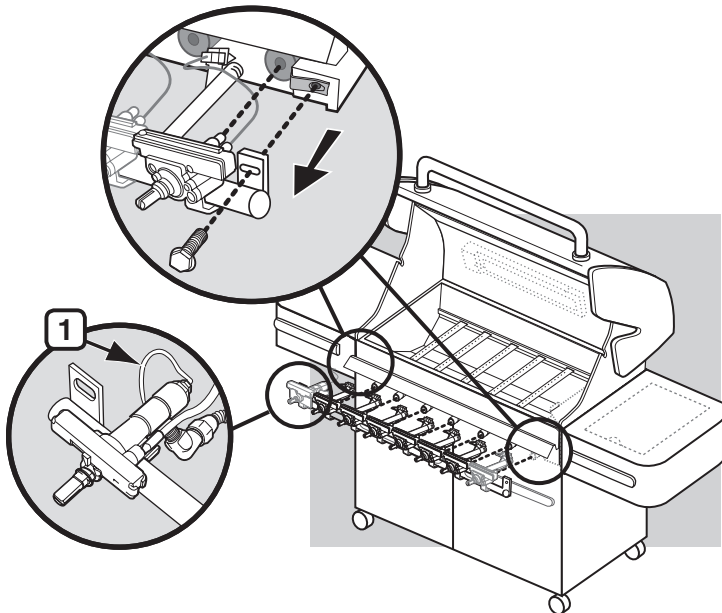
3

MANIFOLD REMOVAL

TOOLS NEEDED:



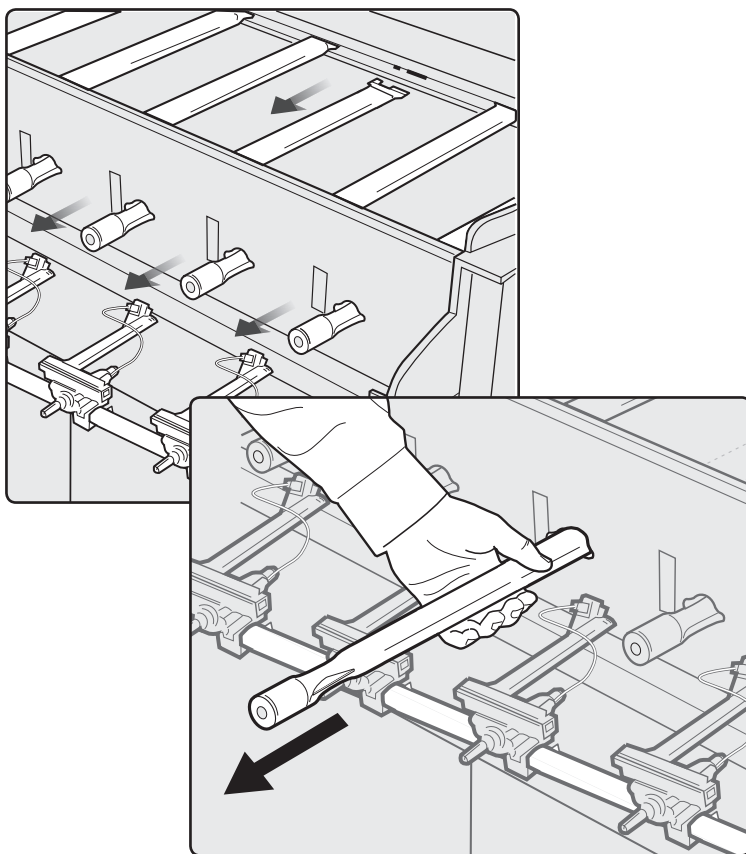
- A) Remove bolts from both sides of the frame (using a 3/8" wrench or socket) to release the manifold from the cookbox assembly.
 B) Slide the manifold out and slightly down from the cookbox assembly.
ALL Gas Line(s) and manifold connections will remain attached.



Note: If you have a 450 or 650 model, be careful not to bend or 'kink' the copper thermocouple line (1), which is attached to the far left valve assembly on manifold.

4

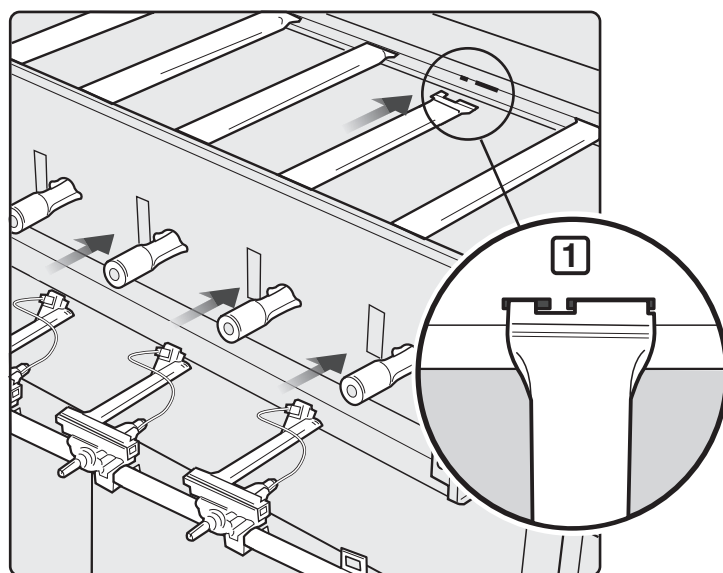
BURNER TUBE REMOVAL



• REPLACEMENT PART INSTALLATION

5

BURNER TUBE INSTALLATION



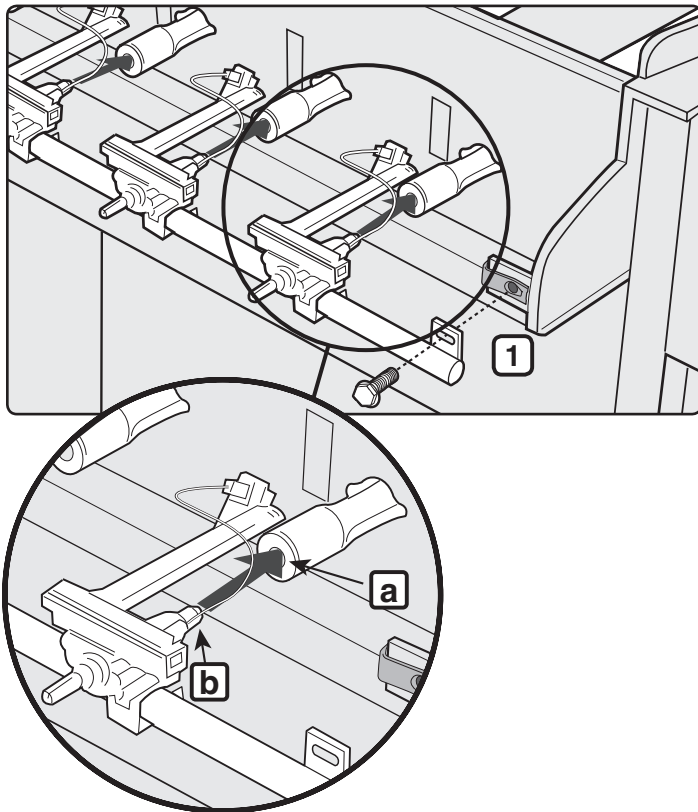
6

MANIFOLD REINSTALLATION

TOOLS NEEDED:



- Carefully re-align the manifold and slide the manifold valve assemblies into the burner tube openings.
- Install the two (2) bolts (1) securing the manifold to the cookbox assembly. **Do not fully tighten the two (2) bolts at this time. Tighten just enough so the burner tubes do not slip out of either the back slots in the cookbox or the manifold valve stems.**



CAUTION: When installing the manifold assembly, the burner tube openings (a) must be positioned properly over the valve orifices (b).

- VISUAL CHECK:** Make sure that all of the manifold valves are positioned into all of the burner tubes.
- VISUAL CHECK:** Make sure the slotted end of the burner tubes are properly aligned into the slots on the backside of the cookbox.
- Fully tighten the two (2) bolts on both sides of the cookbox frame (using a 3/8" wrench) to secure the manifold to the cookbox assembly.

7

CHECK FOR GAS LEAKS

⚠ DANGER

Do not use an open flame to check for gas leaks. Be sure there are no sparks or open flames in the area while you check for leaks. Sparks or open flames will result in a fire or explosion, which can cause serious bodily injury or death and damage to property.

You will need: a soap and water solution and a rag or brush to apply it.

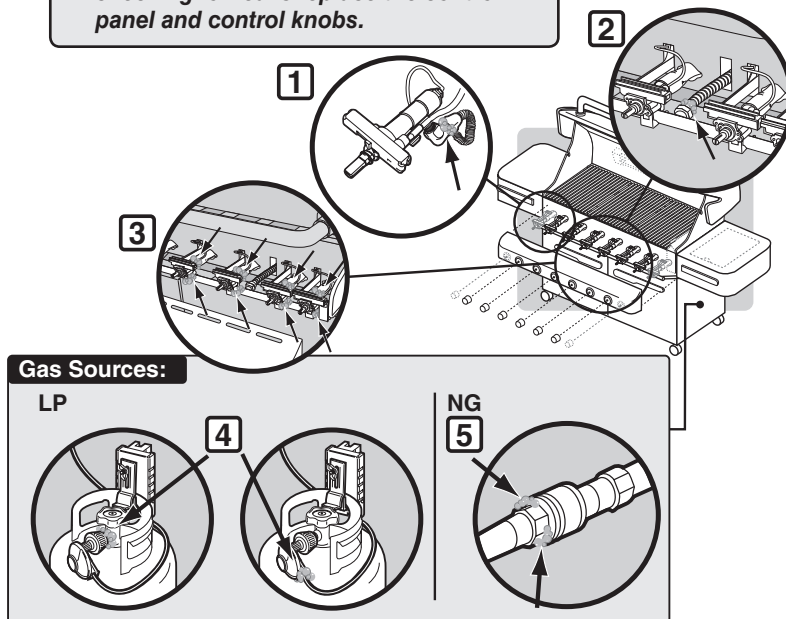
- Mix soap and water.
- Turn on gas supply at source.
- Check for leaks by wetting fittings with soap and water solution and watching for bubbles. If bubbles form, or if a bubble grows, there is a leak.
- When leak checking is complete, turn gas supply off at source and rinse connections with water.

Check:

- Gas supply to IR burner valve assembly (models 450 and 650 only). (1).
- Main gas supply to manifold connection (2).
- ⚠ WARNING:** If there is a leak at connection 1 or 2, retighten the fitting with a wrench and recheck for leaks with soap and water solution. If a leak persists after retightening the fitting, turn OFF the gas. **DO NOT OPERATE THE GRILL.** Failure to follow dangers, warnings and cautions contained in this instruction sheet may cause a fire or an explosion resulting in serious personal injury or death as well as damage to property. Contact the Customer Service Representative in your area using the contact information on our web site. Log onto www.weber.com.
- Valve to manifold connection (3).
- LP: Regulator hose-to-cylinder connection (4).
- NG: Hose-to-quick-disconnect gas line connection (5).
- ⚠ WARNING:** If there is a leak at connections (3, 4, or 5), turn OFF the gas. **DO NOT OPERATE THE GRILL.** Failure to follow dangers, warnings and cautions contained in this instruction sheet may cause a fire or an explosion resulting in serious personal injury or death as well as damage to property. Contact the Customer Service Representative in your area using the contact information on our web site. Log onto www.weber.com.

When leak checks are complete, turn gas supply OFF at the source and rinse connections with water.

⚠ IMPORTANT: To do a proper leak check the control panel must be removed. After checking for leaks replace the control panel and control knobs.



TOOLS NEEDED:

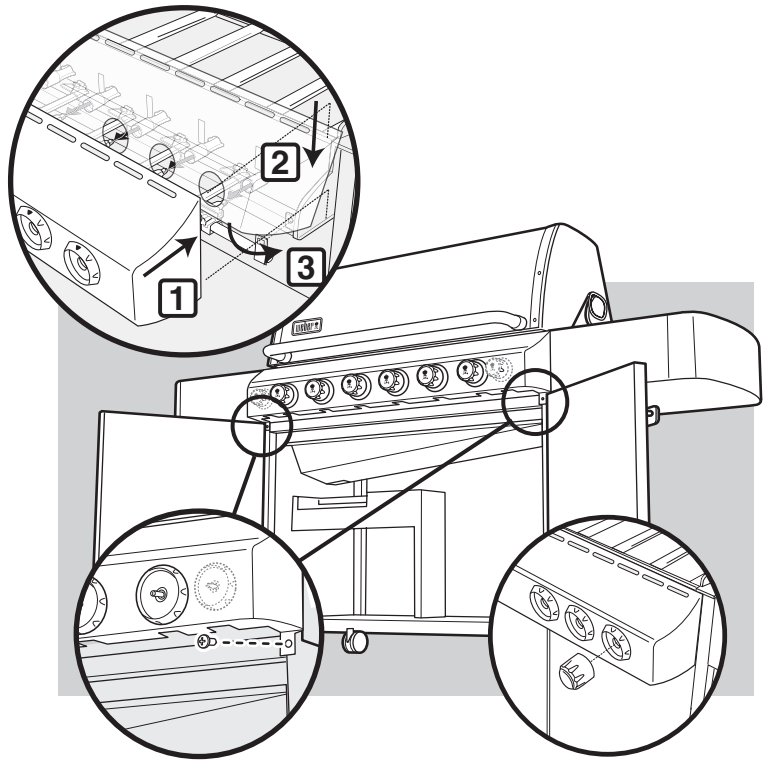


- PHILLIPS

Older Summit Models:

- A) Open both doors:** Gently place control panel onto grill frame hanger brackets (1) at same time tilt (2) and lower (3) control panel onto hanger brackets.
- B) Install screws** to secure control panel to grill frame, with a Phillips head screwdriver.
- C) Install ALL** of control knobs. (Not Pictured)

MAKE SURE ALL CONTROL KNOBS ARE SET TO THE “OFF” POSITION BEFORE STARTING TO REMOVE CONTROL PANEL.



⚠ WARNING: Make sure all parts are assembled and hardware is fully tightened before operating the grill. Your actions, if you fail to follow this product warning, may cause a fire, an explosion, or structural failure resulting in serious personal injury or death as well as damage to property.

⚠ PROPOSITION 65 WARNING: HANDLING THE BRASS MATERIAL ON THIS PRODUCT EXPOSES YOU TO LEAD, A CHEMICAL KNOWN TO THE STATE OF CALIFORNIA TO CAUSE CANCER, BIRTH DEFECTS OR OTHER REPRODUCTIVE HARM.

(WASH HANDS AFTER HANDLING THIS PRODUCT.)

⚠ WARNING: All repairs to gas carrying, gas burning, igniter or structural components must be performed by an authorized Weber-Stephen Products LLC service technician.

These parts may be gas carrying, gas burning, igniter or structural components. Please contact Weber-Stephen Products LLC, Customer Service Department for Genuine Weber-Stephen Products LLC replacement part(s) information.

⚠ WARNING: Do not attempt to make any repair to gas carrying, gas burning, igniter or structural components without contacting Weber-Stephen Products LLC, Customer Service Department. Your actions, if you fail to follow this Product Warning, may cause a fire, an explosion, or structural failure resulting in serious personal injury or death as well as damage to property.



WEBER-STEPHEN PRODUCTS LLC
Customer Service Center
1890 Roselle Road, Suite 308
Schaumburg, IL 60195

1-800-446-1071 (USA ONLY)
www.weber.com