



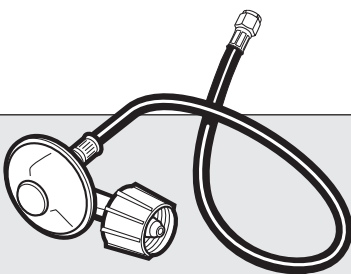
**Summit<sup>®</sup>**  
**GENESIS<sup>®</sup>**

# NG HOSE / LP HOSE AND REGULATOR REPLACEMENT INSTRUCTIONS

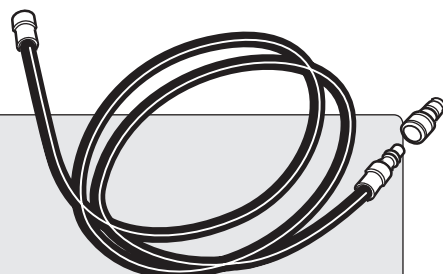
THIS PROCEDURE SHOULD ONLY BE PERFORMED BY AN AUTHORIZED  
WEBER-STEPHEN PRODUCTS LLC SERVICE TECHNICIAN

**⚠ WARNING: GENUINE WEBER-STEPHEN REPLACEMENT PARTS MUST BE USED FOR ANY REPAIR OR REPLACEMENT. YOUR ACTIONS, IF YOU FAIL TO FOLLOW THIS PRODUCT WARNING, MAY CAUSE A FIRE, AN EXPLOSION, OR STRUCTURAL FAILURE RESULTING IN SERIOUS PERSONAL INJURY OR DEATH AS WELL AS DAMAGE TO PROPERTY. (WILL VOID ALL WARRANTY PROTECTION.)**

**⚠ DANGER: BEFORE PERFORMING ANY WORK MAKE SURE THE GAS SUPPLY IS TURNED OFF AT THE SOURCE. FAILURE TO FOLLOW DANGERS, WARNINGS AND CAUTIONS CONTAINED IN THIS INSTRUCTION SHEET MAY CAUSE A FIRE OR AN EXPLOSION RESULTING IN SERIOUS PERSONAL INJURY OR DEATH AS WELL AS DAMAGE TO PROPERTY.**



**LP  
HOSE AND REGULATOR  
REPLACEMENT**



**NG  
HOSE  
REPLACEMENT**

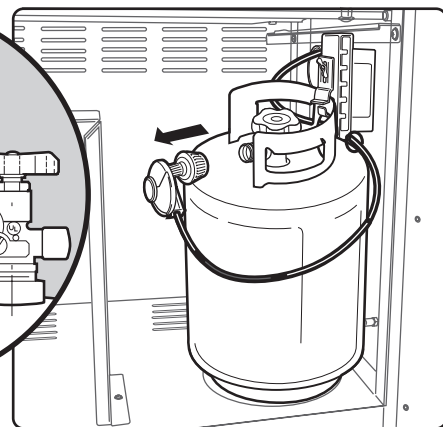
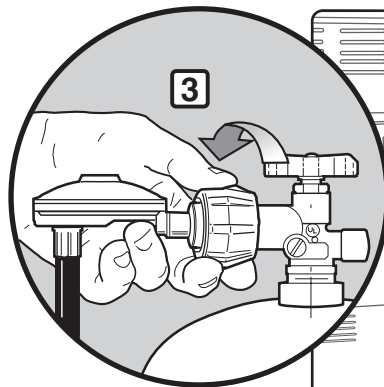
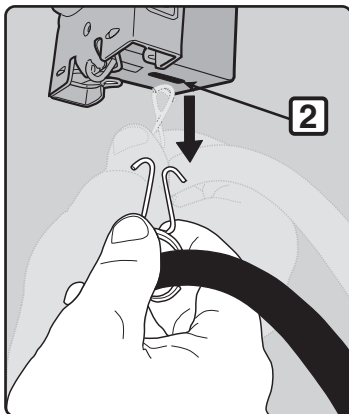
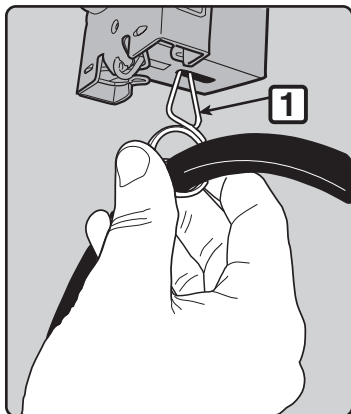
**⚠ BEFORE STARTING:** Make sure lid is closed and casters are locked to prevent grill from moving.

**1**

## HOSE DISCONNECTION FROM GAS SOURCE

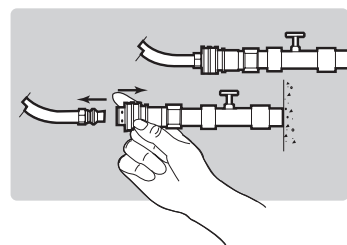
### FOR LP UNITS:

- A) Squeeze hose retention clip (1) on regulator hose. Slide hose retention clip out of slot (2) on underside of tank scale.
- B) Unscrew regulator coupling from tank valve; turn counter-clockwise, or to the left (3).
- ⚠ WARNING: Do not use a wrench to loosen connection. Using a wrench could damage regulator coupling and could cause a leak.**
- C) Loosen wing-nut on tank scale; lift up locking clip.
- D) Remove propane cylinder from cabinet of grill.



### FOR NG UNITS:

- A) Slide back collar of the quick-disconnect to remove hose from gas source.

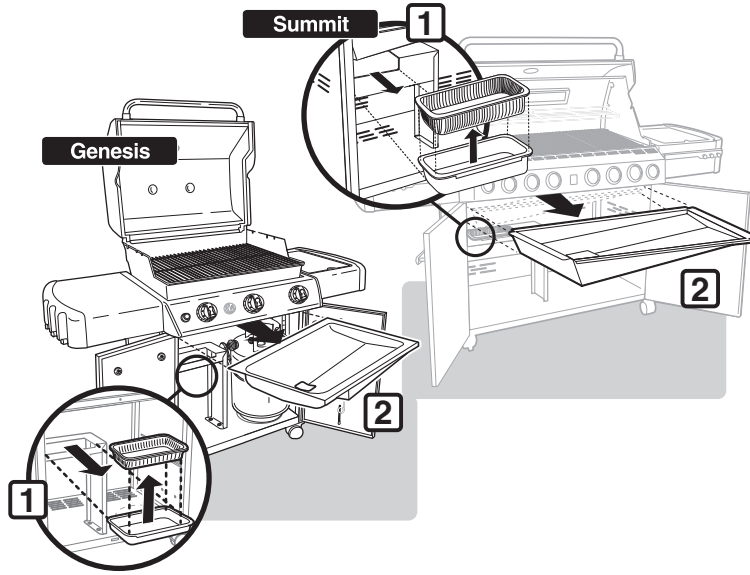


NOTE: Grills illustrated may have slight differences than model purchased.

## 2

## GREASE TRAY / DRIP PAN REMOVAL

- A) Remove disposable drip pan and catch pan (1).  
B) Remove slide-out grease tray (2).



## 3

## HOSE DISCONNECTION FROM BULKHEAD

TOOLS NEEDED: - 5/8", 3/4", 7/8"

- ADJUSTABLE WRENCH

- A) **Summit:** Disconnect hose and regulator (1) by using a 7/8" wrench or adjustable wrench (2) to hold bulkhead fitting in place, and a 3/4" wrench (3) on hose and regulator fitting. Turn regulator fitting clockwise until it releases from bulkhead assembly.  
B) **Genesis:** Disconnect hose and regulator (4) by using a 5/8" wrench (5) to hold bulkhead fitting in place, and a 3/4" wrench (6) on hose and regulator fitting. Turn regulator fitting clockwise until it releases from bulkhead assembly.

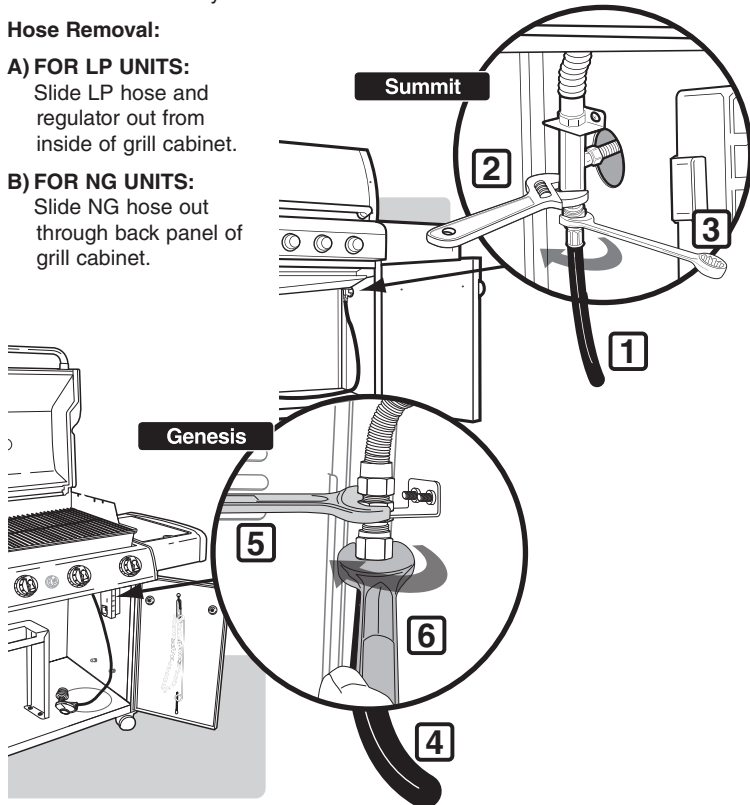
### Hose Removal:

#### A) FOR LP UNITS:

Slide LP hose and regulator out from inside of grill cabinet.

#### B) FOR NG UNITS:

Slide NG hose out through back panel of grill cabinet.



## 4

## HOSE CONNECTION TO BULKHEAD

TOOLS NEEDED:

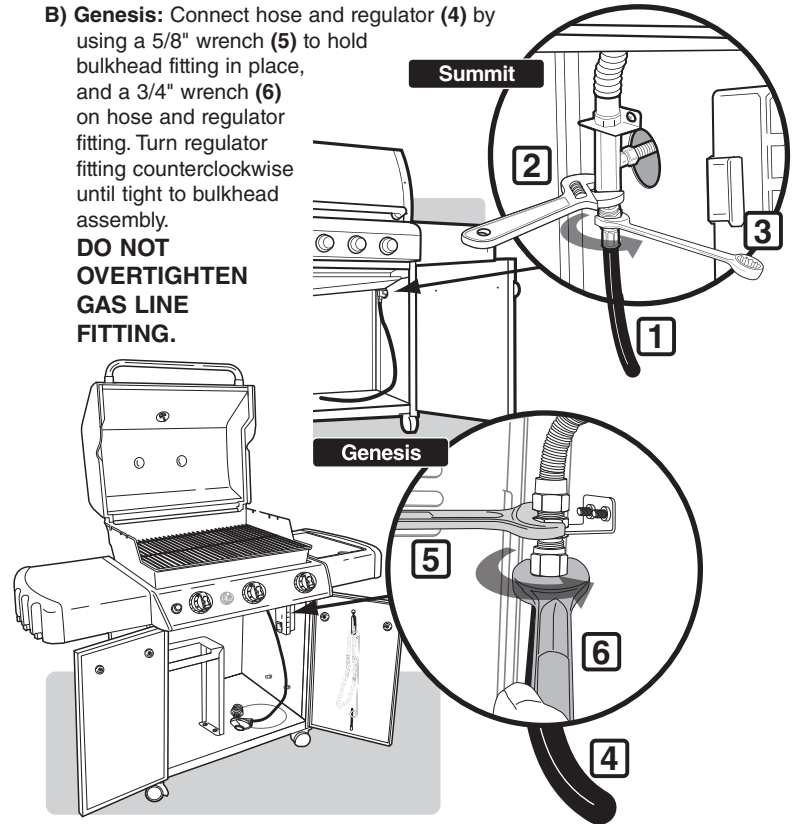
- 5/8", 3/4", 7/8"

- ADJUSTABLE WRENCH

FOR LP UNITS: BEFORE CONNECTING HOSE AND REGULATOR, REMOVE RETENTION CLIP OFF OLD REGULATOR HOSE AND INSTALL ON NEW REGULATOR HOSE.

- A) **Summit:** Connect hose and regulator (1) by using a 7/8" wrench or adjustable wrench (2) to hold bulkhead fitting in place, and a 3/4" wrench (3) on hose and regulator fitting. Turn regulator fitting counterclockwise until tight to bulkhead assembly.  
**DO NOT OVERTIGHTEN GAS LINE FITTING.**

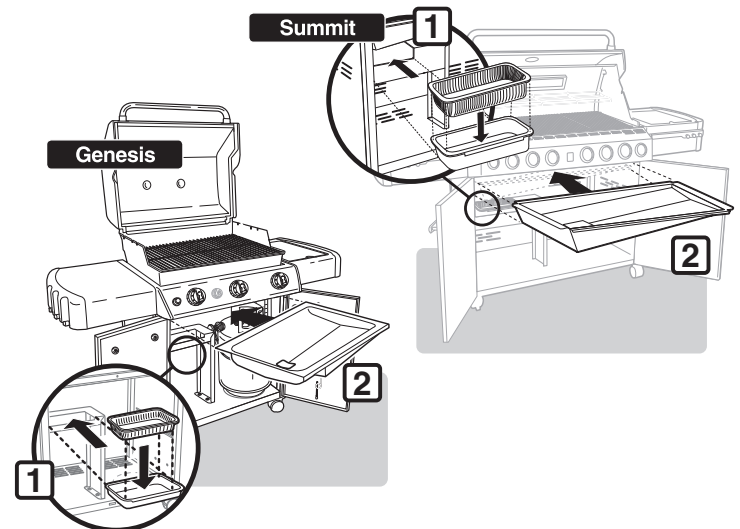
- B) **Genesis:** Connect hose and regulator (4) by using a 5/8" wrench (5) to hold bulkhead fitting in place, and a 3/4" wrench (6) on hose and regulator fitting. Turn regulator fitting counterclockwise until tight to bulkhead assembly.  
**DO NOT OVERTIGHTEN GAS LINE FITTING.**



## 5

## GREASE TRAY / DRIP PAN REINSTALLATION

- A) Reinstall disposable drip pan and catch pan (1).  
B) Reinstall slide-out grease tray (2).

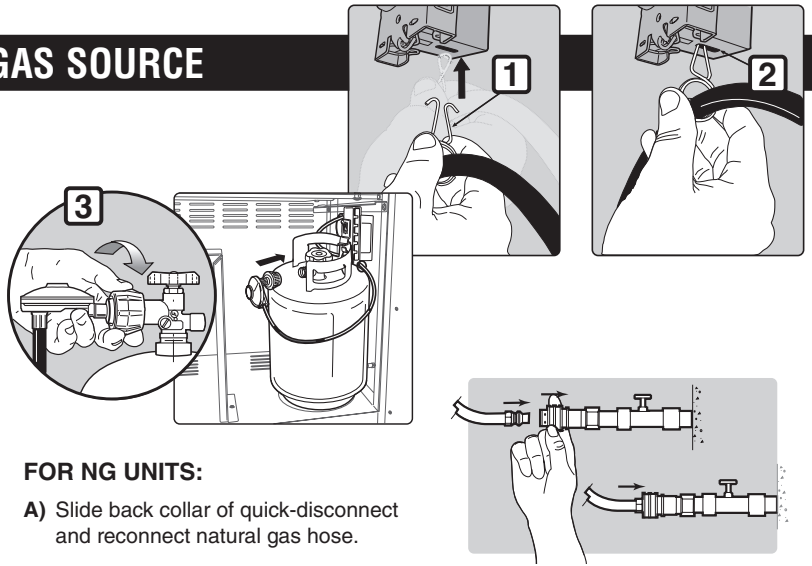


# 6

## HOSE CONNECTION TO GAS SOURCE

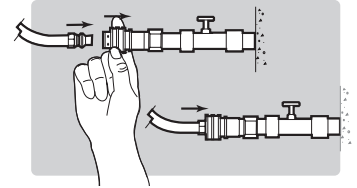
### FOR LP UNITS:

- Place propane cylinder into cabinet of grill.
  - Loosen wing-nut on tank scale; lift up locking clip. Place propane cylinder onto hook and swing locking clip over handle of propane cylinder. Tighten wing-nut to secure propane cylinder to tank scale.
  - Squeeze hose retention clip (1) on regulator hose. Slide hose retention clip into slot (2) on underside of tank scale.
- ⚠ WARNING: Hose must be secured to tank scale with hose retention clip. Failure to do so could cause damage to the hose resulting in a fire or explosion which can cause serious bodily injury or death, and damage to property.**
- Screw regulator coupling onto tank valve; turn clockwise, or to the right (3).
- ⚠ WARNING: Do not use a wrench to tighten connection. Using a wrench could damage regulator coupling and could cause a leak.**



### FOR NG UNITS:

- Slide back collar of quick-disconnect and reconnect natural gas hose.



**⚠ WARNING: Make sure all control knobs are turned to the OFF position before reconnecting gas supply and operating grill. Your actions, if you fail to follow this Product Warning, may cause a fire, an explosion, or structural failure resulting in serious personal injury or death as well as damage to property.**

# 7

## CHECK FOR GAS LEAKS

### ⚠ DANGER

**Do not use an open flame to check for gas leaks. Be sure there are no sparks or open flames in the area while you check for leaks. Sparks or open flames will result in a fire or explosion, which can cause serious bodily injury or death and damage to property.**

You will need: a soap and water solution and a rag or brush to apply it.

- Mix soap and water.
- Turn on the gas supply at the source.
- Check for leaks by wetting the fittings with the soap and water solution and watching for bubbles. If bubbles form, or if a bubble grows, there is a leak.
- When leak checking is complete, turn gas supply off at the source and rinse connections with water.

### Check:

#### Genesis Models:

- Main gas line-to-bulkhead connection (1).
- Hose-to-bulkhead connection (2).

#### Summit Models:

- Main gas line-to-bulkhead connection (1).
- Hose-to-bulkhead connection (2).
- Side burner gas line-to-bulkhead connection (3).

**⚠ DANGER: If there is a leak at connection (1, 2 or 3), retighten the fitting with a wrench and recheck for leaks with soap and water solution. If a leak persists, turn OFF the gas. DO NOT OPERATE THE GRILL. Failure to follow dangers, warnings and cautions contained in this Instruction sheet may cause a fire or an explosion resulting in serious personal injury or death as well as damage to property. Contact the Customer Service Representative in your area using the contact information on our web site. Log onto [www.weber.com](http://www.weber.com).**

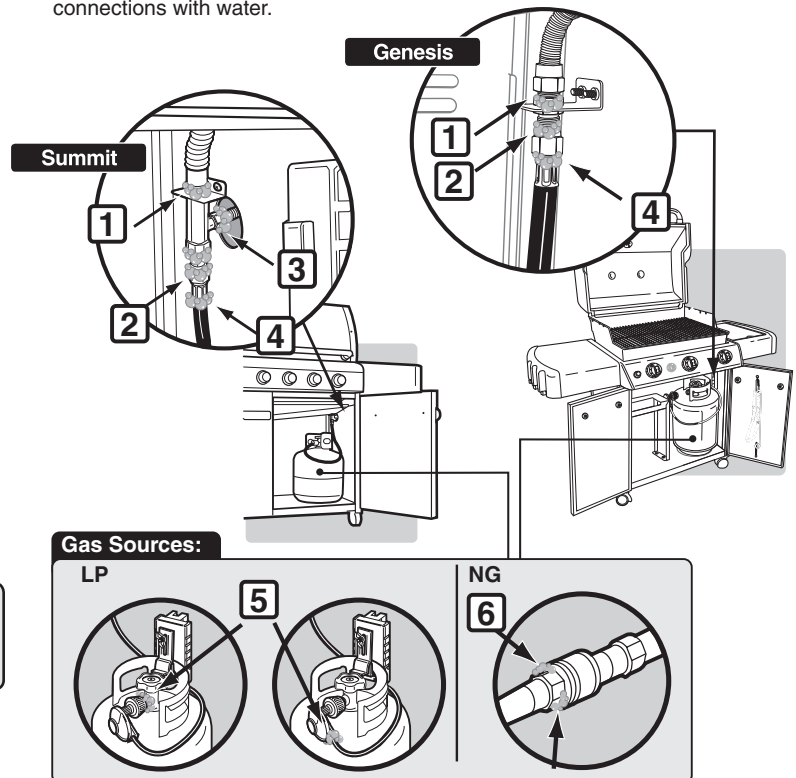
**⚠ IMPORTANT: To do a proper leak check, control panel must be off. After checking for leaks replace control panel, wind deflector and control knobs.**

### Genesis/Summit Models:

- Regulator Hose connection (4).
- LP: Regulator connection (5).
- NG: Hose-to-quick disconnect gas line connection (6).

**⚠ DANGER: If there is a leak at connection (4, 5 or 5), turn off the gas. DO NOT OPERATE THE GRILL. Failure to follow dangers, warnings and cautions contained in this Instruction sheet may cause a fire or an explosion resulting in serious personal injury or death as well as damage to property. Contact the Customer Service Representative in your area using the contact information on our web site. Log onto [www.weber.com](http://www.weber.com).**

When leak checks are complete, turn gas supply OFF at the source and rinse connections with water.



**⚠ WARNING: Make sure all parts are assembled and hardware is fully tightened before operating the grill. Your actions, if you fail to follow this Product Warning, may cause a fire, an explosion, or structural failure resulting in serious personal injury or death as well as damage to property.**

**⚠ PROPOSITION 65 WARNING: HANDLING THE BRASS MATERIAL ON THIS PRODUCT EXPOSES YOU TO LEAD, A CHEMICAL KNOWN TO THE STATE OF CALIFORNIA TO CAUSE CANCER, BIRTH DEFECTS OR OTHER REPRODUCTIVE HARM.**

***(WASH HANDS AFTER HANDLING THIS PRODUCT.)***

**⚠ WARNING: All repairs to gas carrying, gas burning, igniter or structural components must be performed by an authorized Weber-Stephen Products LLC service technician.**

These parts may be gas carrying, gas burning, igniter or structural components. Please contact Weber-Stephen Products LLC, Customer Service Department for Genuine Weber-Stephen Products LLC replacement part(s) information.

**⚠ WARNING: Do not attempt to make any repair to gas carrying, gas burning, igniter or structural components without contacting Weber-Stephen Products LLC, Customer Service Department. Your actions, if you fail to follow this Product Warning, may cause a fire, an explosion, or structural failure resulting in serious personal injury or death as well as damage to property.**



WEBER-STEPHEN PRODUCTS LLC  
Customer Service Center  
1890 Roselle Road, Suite 308  
Schaumburg, IL 60195

1-800-446-1071 (USA ONLY)  
[www.weber.com](http://www.weber.com)