



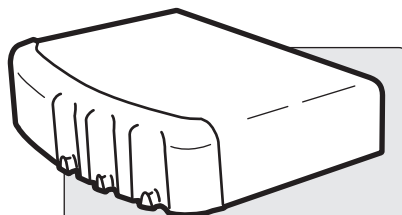
GENESIS®

LEFT AND RIGHT SIDE TABLE REPLACEMENT INSTRUCTIONS

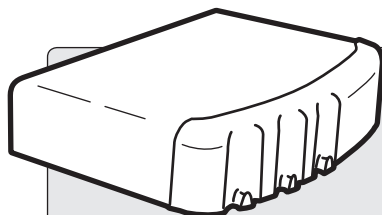
THIS PROCEDURE SHOULD ONLY BE PERFORMED BY AN AUTHORIZED
WEBER-STEPHEN PRODUCTS LLC SERVICE TECHNICIAN

⚠ WARNING: GENUINE WEBER-STEPHEN REPLACEMENT PARTS MUST BE USED FOR ANY REPAIR OR REPLACEMENT. YOUR ACTIONS, IF YOU FAIL TO FOLLOW THIS PRODUCT WARNING, MAY CAUSE A FIRE, AN EXPLOSION, OR STRUCTURAL FAILURE RESULTING IN SERIOUS PERSONAL INJURY OR DEATH AS WELL AS DAMAGE TO PROPERTY. (WILL VOID ALL WARRANTY PROTECTION.)

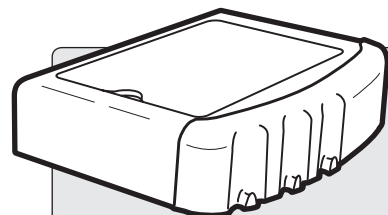
⚠ DANGER: BEFORE PERFORMING ANY WORK MAKE SURE THE GAS SUPPLY IS TURNED OFF AT THE SOURCE. FAILURE TO FOLLOW DANGERS, WARNINGS AND CAUTIONS CONTAINED IN THIS INSTRUCTION SHEET MAY CAUSE A FIRE OR AN EXPLOSION RESULTING IN SERIOUS PERSONAL INJURY OR DEATH AS WELL AS DAMAGE TO PROPERTY.



**LEFT
SIDE TABLE
REPLACEMENT**



**RIGHT
SIDE TABLE
REPLACEMENT**



**RIGHT SIDE
BURNER TABLE
REPLACEMENT**

⚠ BEFORE STARTING:
Make sure lid is closed
and casters are locked to
prevent grill from moving.

1

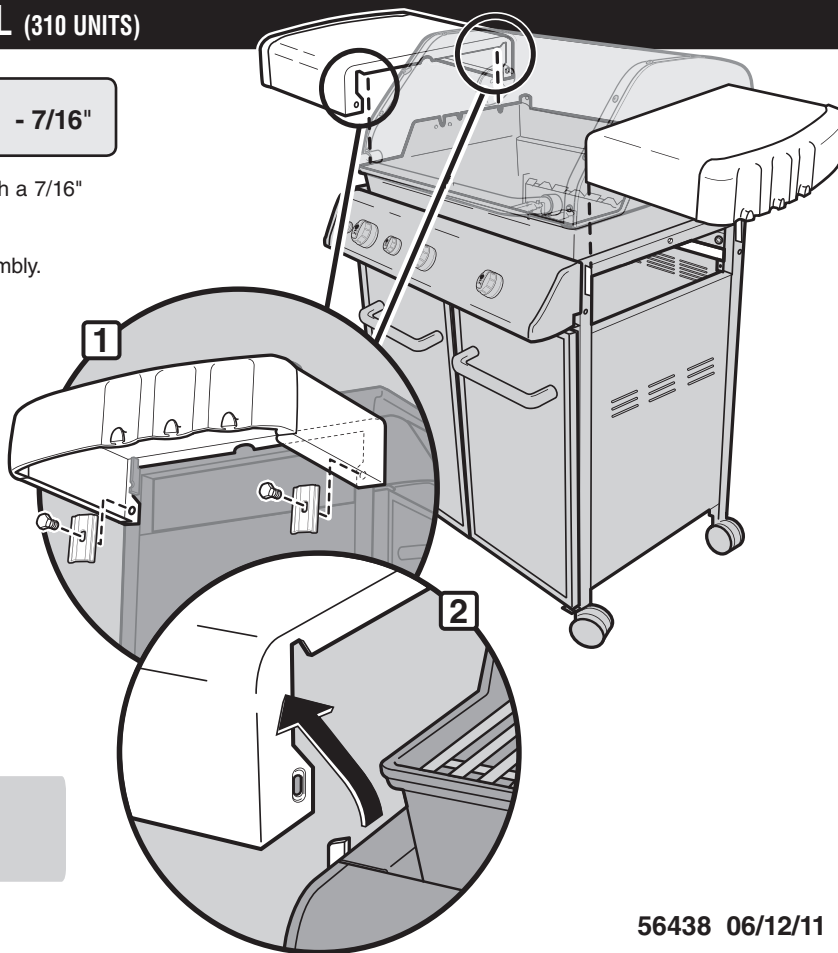
SIDE TABLE REMOVAL (310 UNITS)

TOOLS NEEDED:



- 7/16"

- A)** Remove screws and brackets from bottom of side tables **(1)** with a 7/16" wrench.
- B)** Tilt outer edge of side table up **(2)**.
- C)** Carefully lift side table assembly up and away from frame assembly.



NOTE: Grills illustrated may have slight
differences than model purchased.

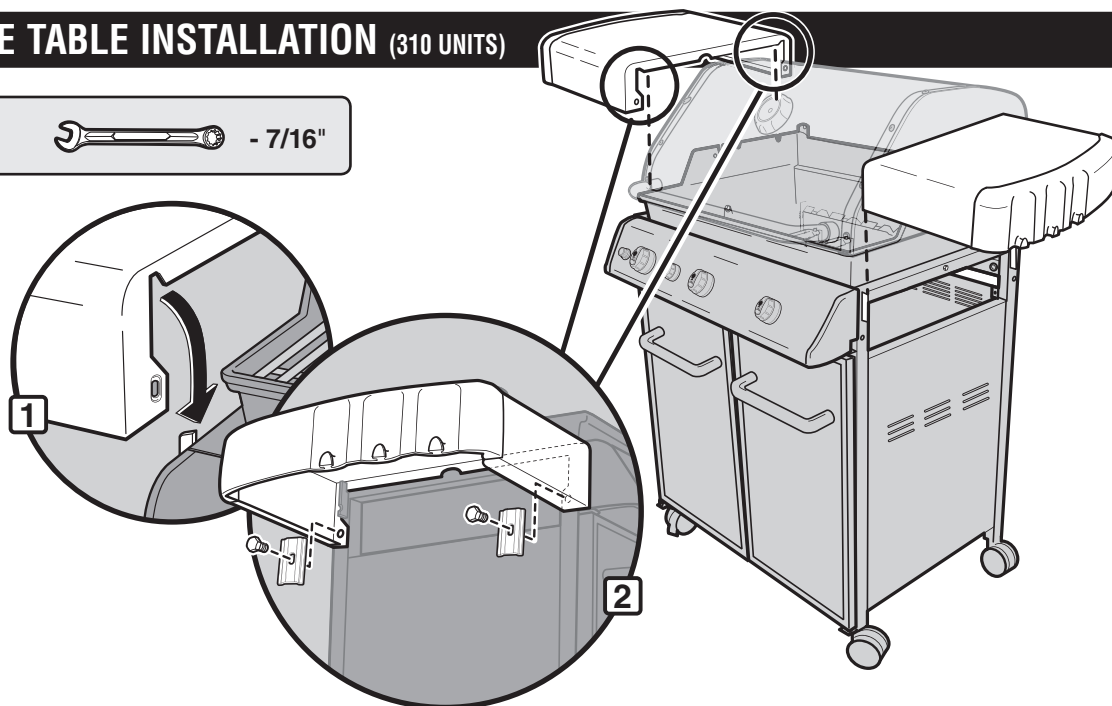
2

SIDE TABLE INSTALLATION (310 UNITS)

TOOLS NEEDED:



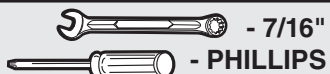
- A) Tilt outer edge of side table up.
- B) Carefully slide side table down and onto frame assembly (1).
- C) Install screws and brackets into bottom of side tables (2) with a 7/16" wrench.



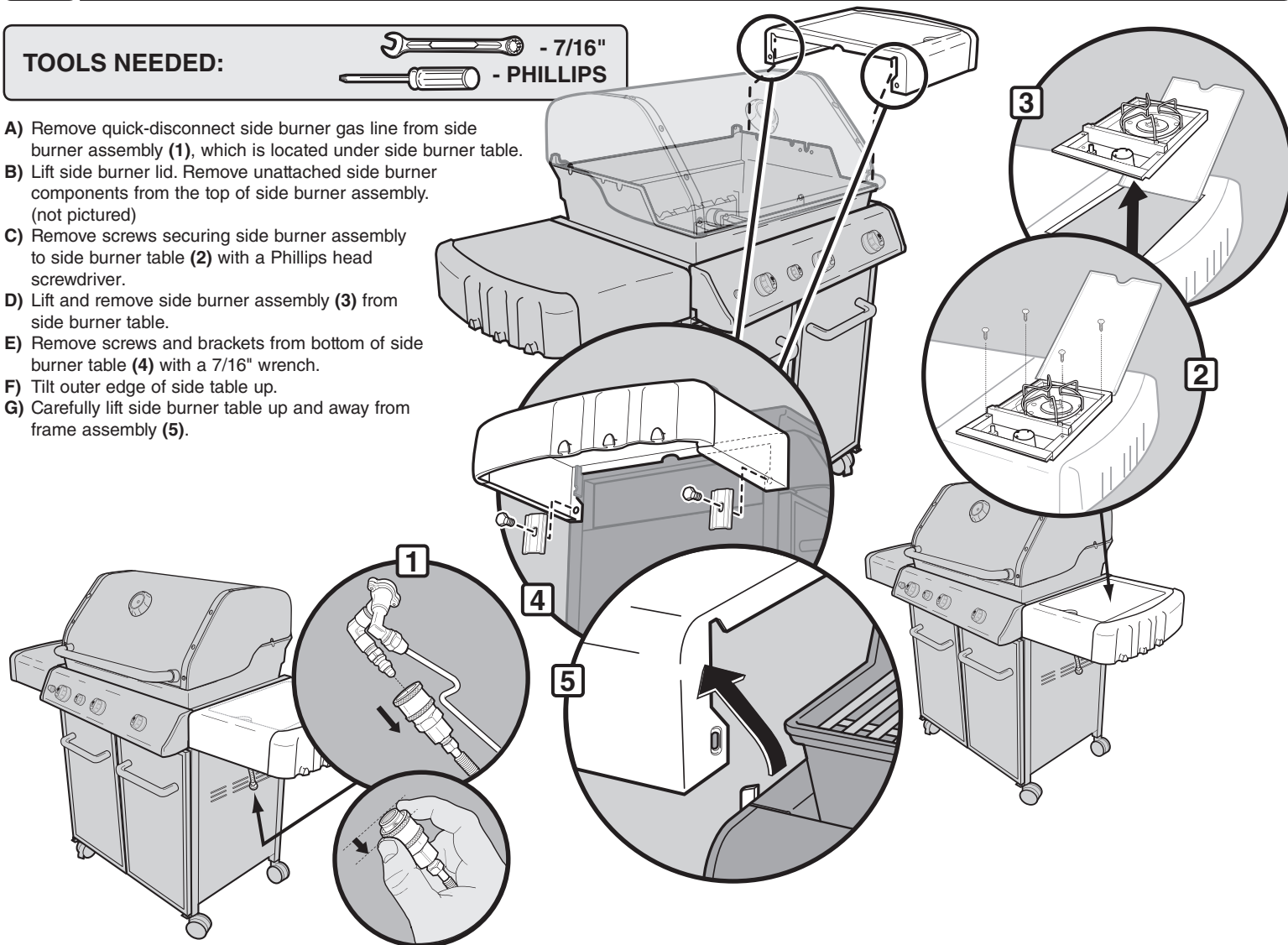
3

SIDE BURNER TABLE REMOVAL (320 - 330 UNITS)

TOOLS NEEDED:



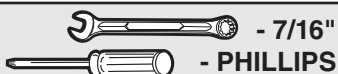
- A) Remove quick-disconnect side burner gas line from side burner assembly (1), which is located under side burner table.
- B) Lift side burner lid. Remove unattached side burner components from the top of side burner assembly. (not pictured)
- C) Remove screws securing side burner assembly to side burner table (2) with a Phillips head screwdriver.
- D) Lift and remove side burner assembly (3) from side burner table.
- E) Remove screws and brackets from bottom of side burner table (4) with a 7/16" wrench.
- F) Tilt outer edge of side table up.
- G) Carefully lift side burner table up and away from frame assembly (5).



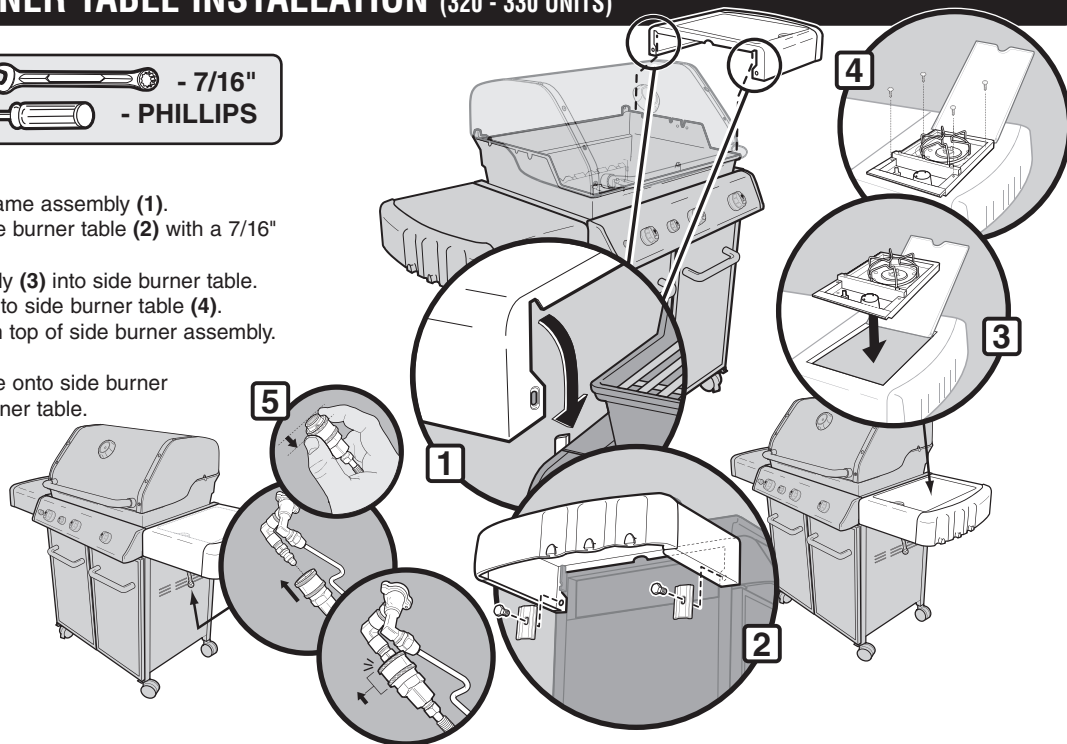
NOTE: Grills illustrated may have slight differences than model purchased.

SIDE BURNER TABLE INSTALLATION (320 - 330 UNITS)

TOOLS NEEDED:



- A) Tilt outer edge of side burner table up.
- B) Carefully slide side burner table down onto frame assembly (1).
- C) Install screws and brackets into bottom of side burner table (2) with a 7/16" wrench.
- D) Lift side burner lid. Place side burner assembly (3) into side burner table.
- E) Install screws securing side burner assembly to side burner table (4).
- F) Install unattached side burner components on top of side burner assembly (not pictured)
- G) Connect quick-disconnect side burner gas line onto side burner assembly (5), which is located under side burner table.



⚠ WARNING: Make sure all control knobs are turned to the OFF position before reconnecting gas supply and operating grill. Your actions, if you fail to follow this Product Warning, may cause a fire, an explosion, or structural failure resulting in serious personal injury or death as well as damage to property.

CHECK FOR GAS LEAKS (320 - 330 UNITS)

⚠ DANGER

Do not use an open flame to check for gas leaks. Be sure there are no sparks or open flames in the area while you check for leaks. Sparks or open flames will result in a fire or explosion, which can cause serious bodily injury or death and damage to property.

You will need: a soap and water solution and a rag or brush to apply it.

- A) Mix soap and water.
- B) Turn on gas supply at source.
- C) Check for leaks by wetting fittings with soap and water solution and watching for bubbles. If bubbles form, or if a bubble grows, there is a leak.
- D) When leak checking is complete, turn gas supply off at source and rinse connections with water.

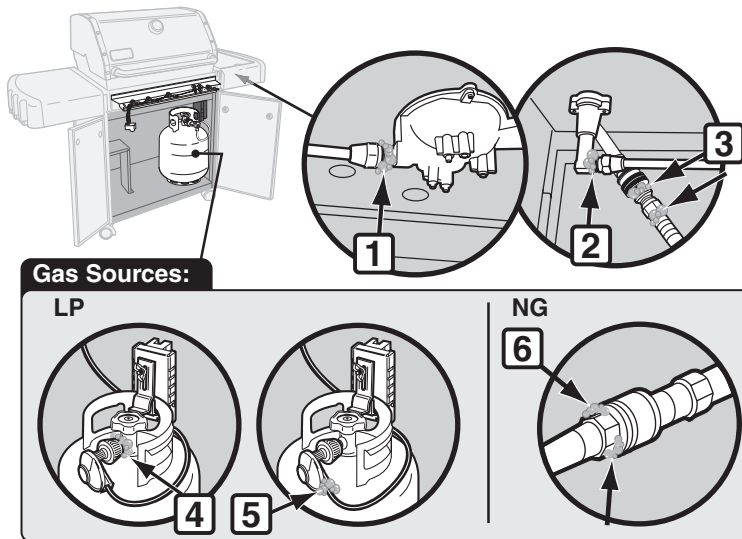
Check:

- E) Side burner pipe fitting-to-side burner cup (1).
- F) Side burner pipe fitting-to-side burner valve connections (2).
- ⚠ **WARNING:** If there is a leak at connection 1 or 2, retighten the fitting with a wrench and recheck for leaks with soap and water solution. If a leak persists after retightening the fitting, turn OFF the gas. **DO NOT OPERATE THE GRILL.** Failure to follow dangers, warnings and cautions contained in this instruction sheet may cause a fire or an explosion resulting in serious personal injury or death as well as damage to property. Contact the Customer Service Representative in your area using the contact information on our web site. Log onto www.weber.com.

- G) Side burner quick-disconnect connections (3).
- H) LP: Regulator hose-to-cylinder connection (4).
- I) LP: Regulator hose-to-regulator connection (5).
- J) NG: Hose-to-quick-disconnect gas line connection (6).

⚠ **WARNING:** If there is a leak at connections (3, 4, 5 or 6), turn OFF the gas. **DO NOT OPERATE THE GRILL.** Failure to follow dangers, warnings and cautions contained in this instruction sheet may cause a fire or an explosion resulting in serious personal injury or death as well as damage to property. Contact the Customer Service Representative in your area using the contact information on our web site. Log onto www.weber.com.

When leak checks are complete, turn gas supply OFF at the source and rinse connections with water.



⚠ WARNING: Make sure all parts are assembled and hardware is fully tightened before operating the grill. Your actions, if you fail to follow this product warning, may cause a fire, an explosion, or structural failure resulting in serious personal injury or death as well as damage to property.

⚠ PROPOSITION 65 WARNING: HANDLING THE BRASS MATERIAL ON THIS PRODUCT EXPOSES YOU TO LEAD, A CHEMICAL KNOWN TO THE STATE OF CALIFORNIA TO CAUSE CANCER, BIRTH DEFECTS OR OTHER REPRODUCTIVE HARM.

(WASH HANDS AFTER HANDLING THIS PRODUCT.)

⚠ WARNING: All repairs to gas carrying, gas burning, igniter or structural components must be performed by an authorized Weber-Stephen Products LLC service technician.

These parts may be gas carrying, gas burning, igniter or structural components. Please contact Weber-Stephen Products LLC, Customer Service Department for Genuine Weber-Stephen Products LLC replacement part(s) information.

⚠ WARNING: Do not attempt to make any repair to gas carrying, gas burning, igniter or structural components without contacting Weber-Stephen Products LLC, Customer Service Department. Your actions, if you fail to follow this Product Warning, may cause a fire, an explosion, or structural failure resulting in serious personal injury or death as well as damage to property.



WEBER-STEPHEN PRODUCTS LLC
Customer Service Center
1890 Roselle Road, Suite 308
Schaumburg, IL 60195

1-800-446-1071 (USA ONLY)
www.weber.com