



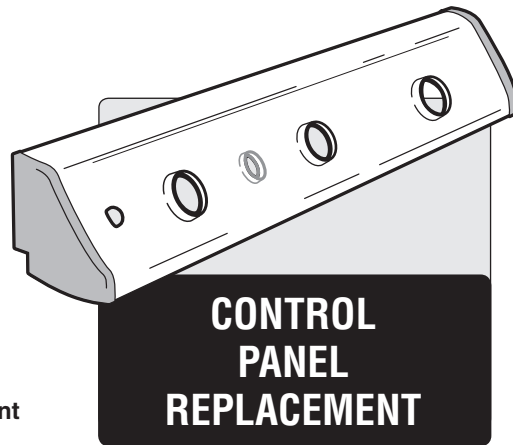
**GENESIS®**

# CONTROL PANEL REPLACEMENT INSTRUCTIONS

**THIS PROCEDURE SHOULD ONLY BE PERFORMED BY AN AUTHORIZED  
WEBER-STEPHEN PRODUCTS LLC SERVICE TECHNICIAN**

**⚠ WARNING: GENUINE WEBER-STEPHEN REPLACEMENT PARTS MUST BE USED FOR ANY REPAIR OR REPLACEMENT. YOUR ACTIONS, IF YOU FAIL TO FOLLOW THIS PRODUCT WARNING, MAY CAUSE A FIRE, AN EXPLOSION, OR STRUCTURAL FAILURE RESULTING IN SERIOUS PERSONAL INJURY OR DEATH AS WELL AS DAMAGE TO PROPERTY. (WILL VOID ALL WARRANTY PROTECTION.)**

**⚠ DANGER: BEFORE PERFORMING ANY WORK MAKE SURE THE GAS SUPPLY IS TURNED OFF AT THE SOURCE. FAILURE TO FOLLOW DANGERS, WARNINGS AND CAUTIONS CONTAINED IN THIS INSTRUCTION SHEET MAY CAUSE A FIRE OR AN EXPLOSION RESULTING IN SERIOUS PERSONAL INJURY OR DEATH AS WELL AS DAMAGE TO PROPERTY.**



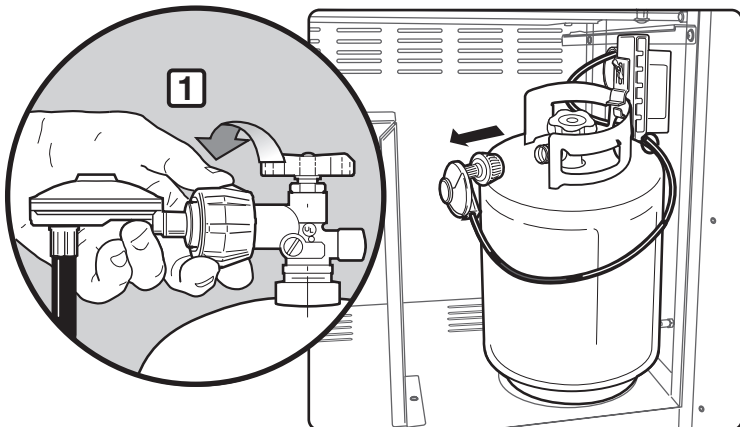
**⚠ BEFORE STARTING:** Make sure lid is closed and casters are locked to prevent grill from moving.

**1**

## HOSE FROM GAS SOURCE DISCONNECTION

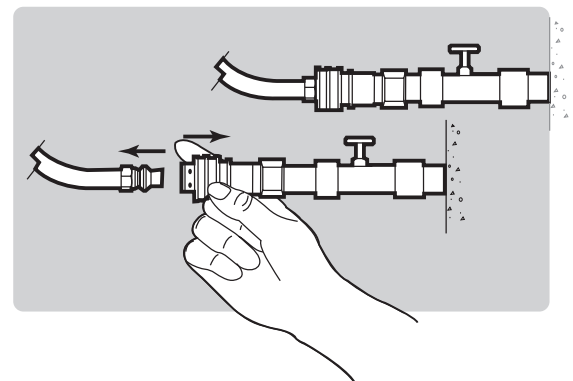
### FOR LP UNITS:

- A)** Unscrew regulator coupling from tank valve; turn counter-clockwise, or to the left (1).
- ⚠ WARNING:** Do not use a wrench to loosen connection. Using a wrench could damage regulator coupling and could cause a leak.



### FOR NG UNITS:

- A)** Slide back collar of the quick-disconnect to remove hose from gas source.



## 2

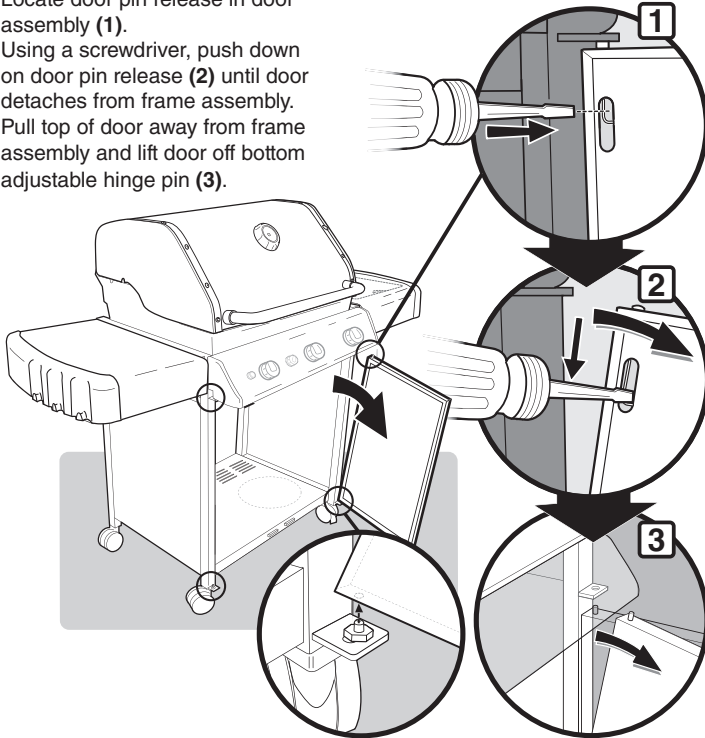
### DOOR REMOVAL

#### TOOLS NEEDED:



- FLATHEAD

- Locate door pin release in door assembly (1).
- Using a screwdriver, push down on door pin release (2) until door detaches from frame assembly.
- Pull top of door away from frame assembly and lift door off bottom adjustable hinge pin (3).



## 3

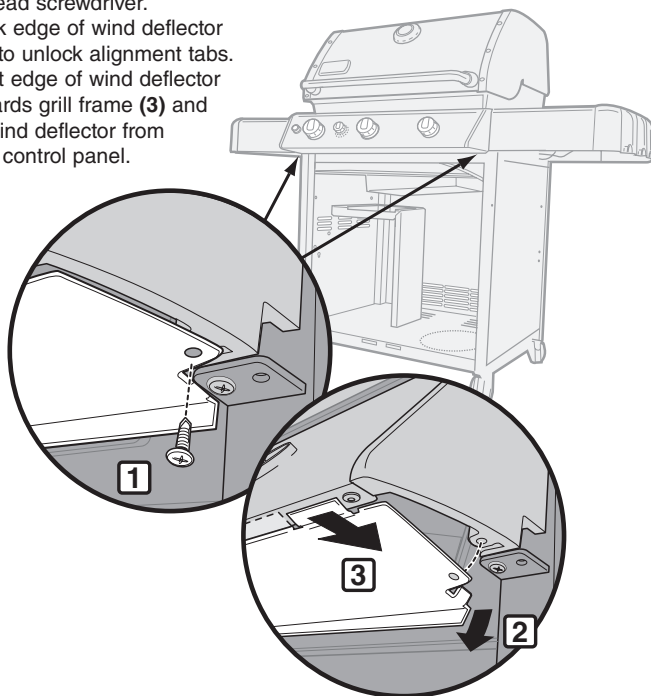
### WIND DEFLECTOR REMOVAL

#### TOOLS NEEDED:



- PHILLIPS

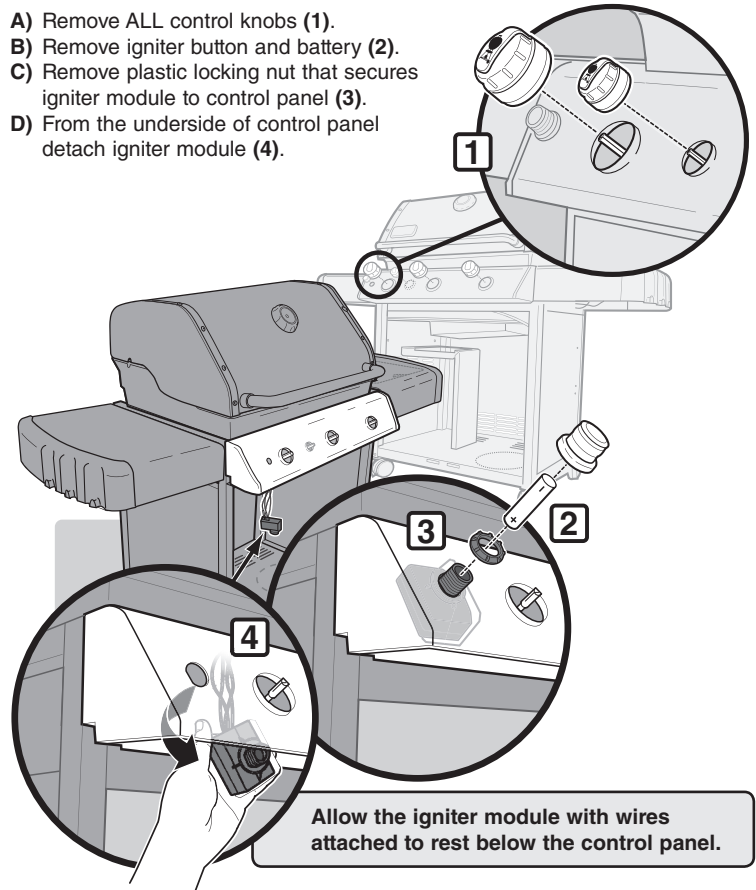
- Locate Phillips head screws under control panel.
- Remove screws that secure wind deflector to control panel (1) with a Phillips head screwdriver.
- Slide back edge of wind deflector down (2) to unlock alignment tabs.
- Slide front edge of wind deflector back towards grill frame (3) and remove wind deflector from bottom of control panel.



## 4

### CONTROL KNOB REMOVAL

- Remove ALL control knobs (1).
- Remove igniter button and battery (2).
- Remove plastic locking nut that secures igniter module to control panel (3).
- From the underside of control panel detach igniter module (4).



## 5

### CONTROL PANEL REMOVAL

#### TOOLS NEEDED:

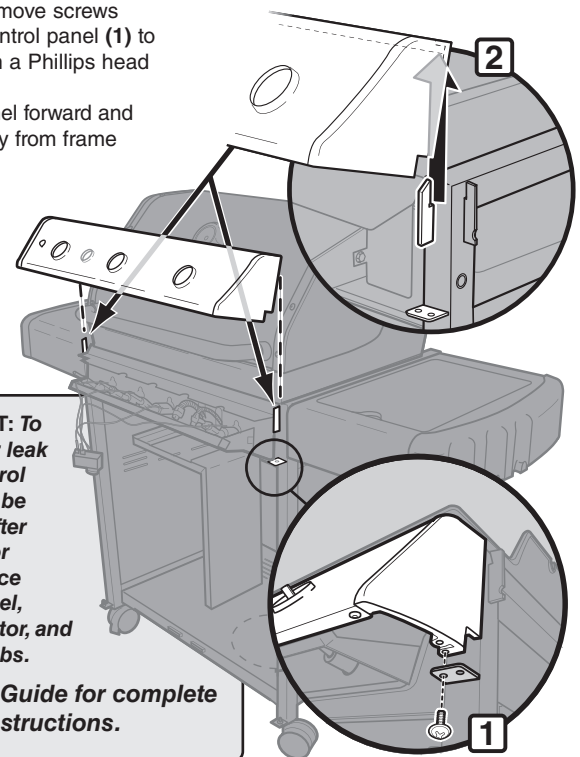


- PHILLIPS

- Locate and remove screws that secure control panel (1) to grill frame with a Phillips head screwdriver.
- Tilt control panel forward and lift up and away from frame assembly (2).


**⚠ IMPORTANT:** To do a proper leak check, control panel must be removed. After checking for leaks, replace control panel, wind deflector, and control knobs.

See Owner's Guide for complete leak check instructions.



## • REPLACEMENT PART INSTALLATION

### 6 CONTROL PANEL INSTALLATION

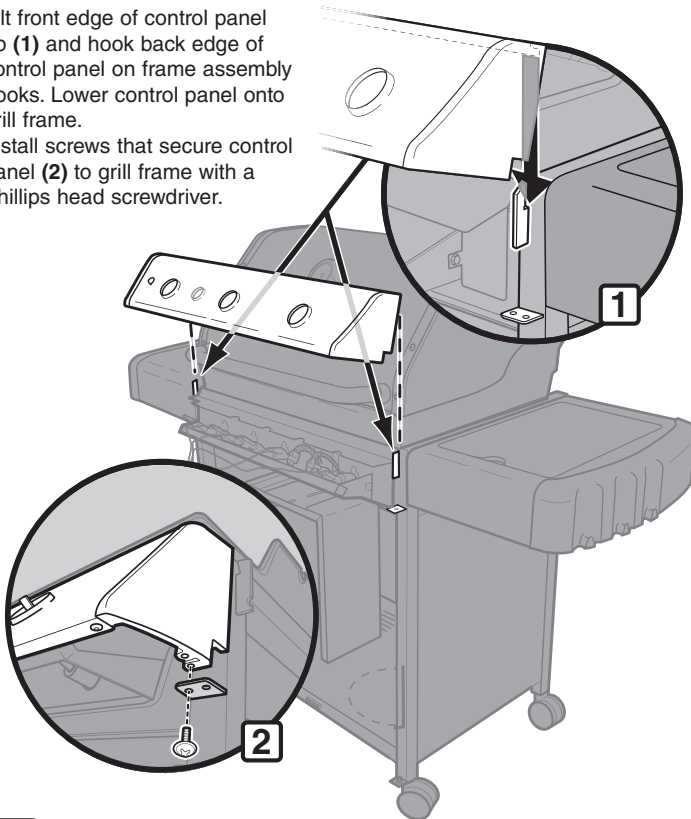
**TOOLS NEEDED:**  - PHILLIPS

**⚠ IMPORTANT:** To do a proper leak check, control panel must be removed. After checking for leaks, reinstall control panel, wind deflector, and control knobs.

See Owner's Guide for complete leak check instructions.

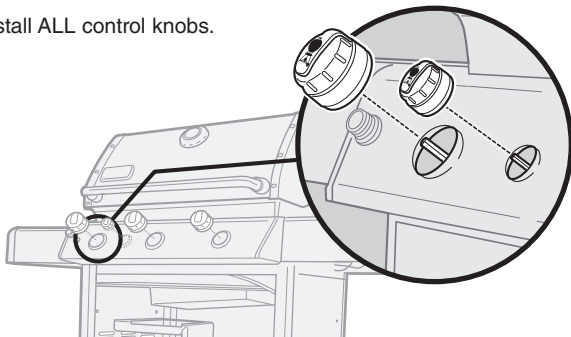
- A) Tilt front edge of control panel up (1) and hook back edge of control panel on frame assembly hooks. Lower control panel onto grill frame.

- B) Install screws that secure control panel (2) to grill frame with a Phillips head screwdriver.



### 7 CONTROL KNOBS REINSTALLATION

- A) Reinstall ALL control knobs.



**⚠ WARNING:** Make sure all control knobs are turned to the OFF position before reconnecting gas supply and operating grill. Your actions, if you fail to follow this Product Warning, may cause a fire, an explosion, or structural failure resulting in serious personal injury or death as well as damage to property.

## 8

### IGNITER MODULE REINSTALLATION

- A) Connect igniter wires to ignition module (1) before installing in control panel.

**REASSEMBLY NOTE:** Follow Igniter Module Wire Guide for proper alignment order.

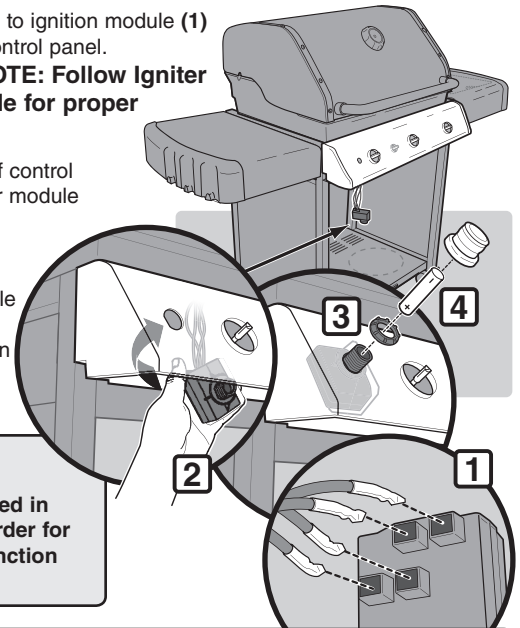
- B) From the underside of control panel, reinstall igniter module through hole (2).

- C) Reinstall plastic locking nut that secures igniter module to control panel (3).

- D) Reinstall igniter button and battery (4).

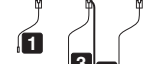
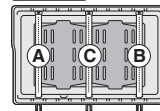
**IMPORTANT NOTE:** All

igniter wires must be installed and supported in igniter wire clips in order for ignition module to function properly.

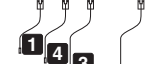
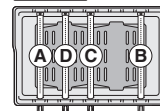


#### IGNITER MODULE WIRE GUIDE 310/320/330

310/320



330



#### Burner Tube

Left Burner (A)

Right Burner (B)

Center Burner (C)

Center Burner (D)

#### Wire End & Terminal Color

Black (1)

Yellow (2)

Blue (3)

Green (Ground) (4)

## 9

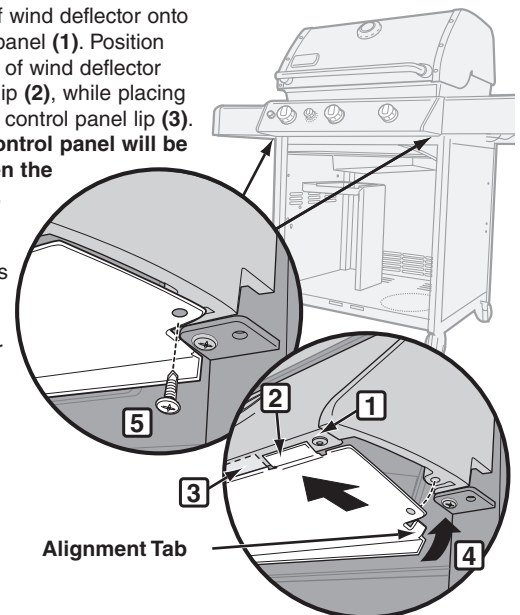
### WIND DEFLECTOR REINSTALLATION

**TOOLS NEEDED:**  - PHILLIPS

- A) Position front edge of wind deflector onto bottom lip of control panel (1). Position both outer short tabs of wind deflector below control panel lip (2), while placing inner long tab above control panel lip (3). The bottom lip of control panel will be sandwiched between the wind deflector tabs.

- B) Slide back edge of wind deflector up (4) to lock alignment tabs into place.

- C) Install screws that secure wind deflector to control panel (5) with a Phillips head screwdriver.



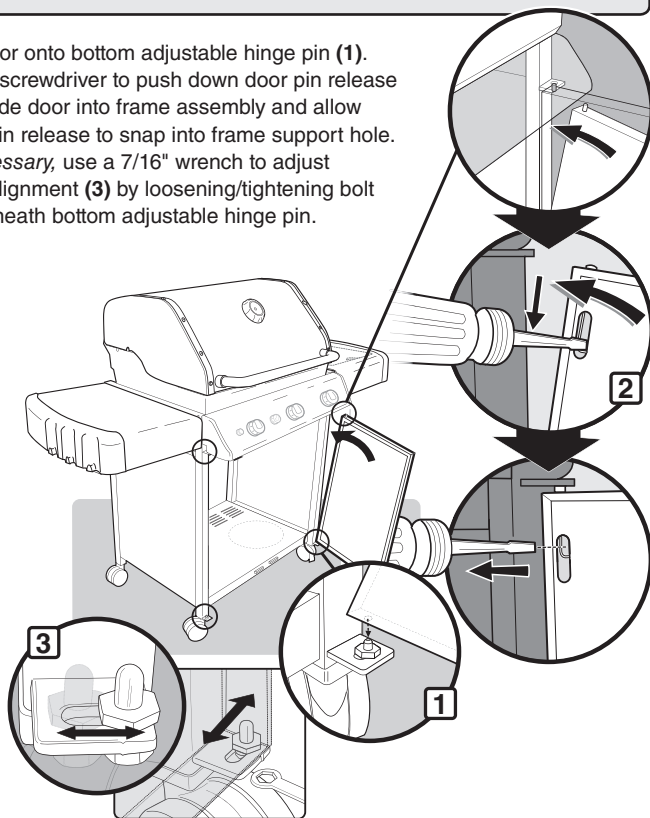
# 10

## DOOR REINSTALLATION

### TOOLS NEEDED:

 - FLATHEAD

- A) Set door onto bottom adjustable hinge pin (1).
- B) Use a screwdriver to push down door pin release (2). Slide door into frame assembly and allow door pin release to snap into frame support hole.
- C) If necessary, use a 7/16" wrench to adjust door alignment (3) by loosening/tightening bolt underneath bottom adjustable hinge pin.



**⚠ WARNING:** Make sure all parts are assembled and hardware is fully tightened before operating the grill. Your actions, if you fail to follow this product warning, may cause a fire, an explosion, or structural failure resulting in serious personal injury or death as well as damage to property.

**⚠ PROPOSITION 65 WARNING:** HANDLING THE BRASS MATERIAL ON THIS PRODUCT EXPOSES YOU TO LEAD, A CHEMICAL KNOWN TO THE STATE OF CALIFORNIA TO CAUSE CANCER, BIRTH DEFECTS OR OTHER REPRODUCTIVE HARM.

**(WASH HANDS AFTER HANDLING THIS PRODUCT.)**

**⚠ WARNING:** All repairs to gas carrying, gas burning, igniter or structural components must be performed by an authorized Weber-Stephen Products LLC service technician.

These parts may be gas carrying, gas burning, igniter or structural components. Please contact Weber-Stephen Products LLC, Customer Service Department for Genuine Weber-Stephen Products LLC replacement part(s) information.

**⚠ WARNING:** Do not attempt to make any repair to gas carrying, gas burning, igniter or structural components without contacting Weber-Stephen Products LLC, Customer Service Department. Your actions, if you fail to follow this Product Warning, may cause a fire, an explosion, or structural failure resulting in serious personal injury or death as well as damage to property.

# 11

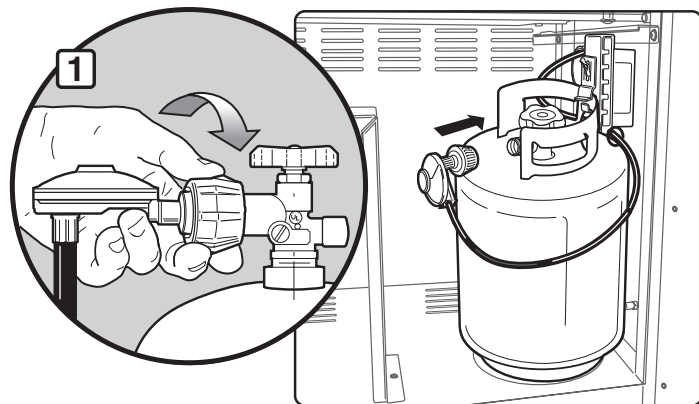
## HOSE TO GAS SOURCE CONNECTION

### FOR LP UNITS:

**⚠ WARNING:** Hose must be secured to tank scale with hose retention clip. Failure to do so could cause damage to the hose resulting in a fire or explosion which can cause serious bodily injury or death, and damage to property.

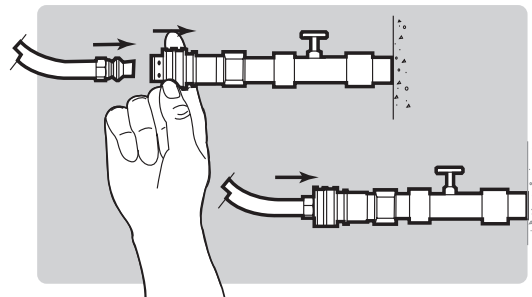
- A) Screw regulator coupling onto tank valve; turn clockwise, or to the right (1).

**⚠ WARNING:** Do not use a wrench to tighten connection. Using a wrench could damage regulator coupling and could cause a leak.



### FOR NG UNITS:

- A) Slide back collar of quick-disconnect and reconnect natural gas hose.



WEBER-STEPHEN PRODUCTS LLC  
Customer Service Center  
1890 Roselle Road, Suite 308  
Schaumburg, IL 60195

1-800-446-1071 (USA ONLY)  
www.weber.com