



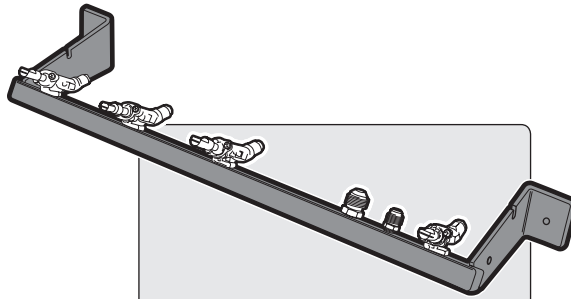
GENESIS®

MANIFOLD REPLACEMENT INSTRUCTIONS

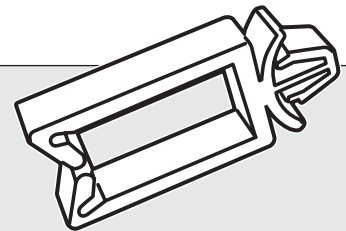
**THIS PROCEDURE SHOULD ONLY BE PERFORMED BY AN AUTHORIZED
WEBER-STEPHEN PRODUCTS LLC SERVICE TECHNICIAN**

⚠ WARNING: GENUINE WEBER-STEPHEN REPLACEMENT PARTS MUST BE USED FOR ANY REPAIR OR REPLACEMENT. YOUR ACTIONS, IF YOU FAIL TO FOLLOW THIS PRODUCT WARNING, MAY CAUSE A FIRE, AN EXPLOSION, OR STRUCTURAL FAILURE RESULTING IN SERIOUS PERSONAL INJURY OR DEATH AS WELL AS DAMAGE TO PROPERTY. (WILL VOID ALL WARRANTY PROTECTION.)

⚠ DANGER: BEFORE PERFORMING ANY WORK MAKE SURE THE GAS SUPPLY IS TURNED OFF AT THE SOURCE. FAILURE TO FOLLOW DANGERS, WARNINGS AND CAUTIONS CONTAINED IN THIS INSTRUCTION SHEET MAY CAUSE A FIRE OR AN EXPLOSION RESULTING IN SERIOUS PERSONAL INJURY OR DEATH AS WELL AS DAMAGE TO PROPERTY.



**MANIFOLD
ASSEMBLY
REPLACEMENT**



**IGNITER
WIRE CLIPS
REPLACEMENT**

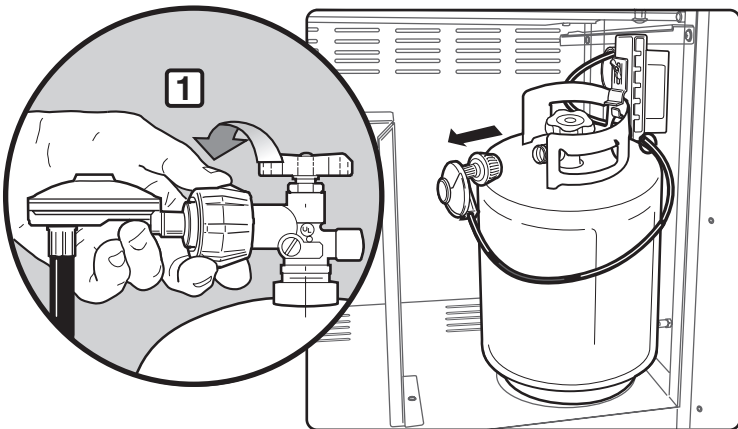
⚠ BEFORE STARTING: Make sure lid is closed and casters are locked to prevent grill from moving.

1

HOSE FROM GAS SOURCE DISCONNECTION

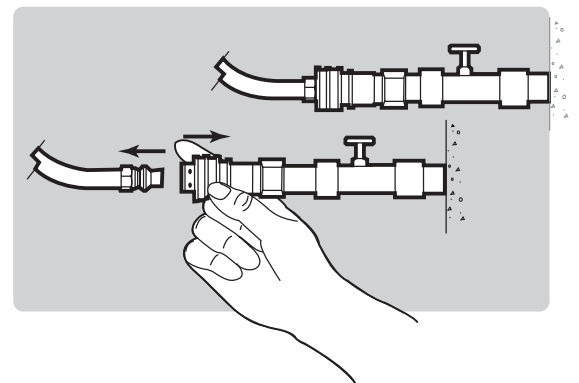
FOR LP UNITS:

- A) Unscrew regulator coupling from tank valve; turn counter-clockwise, or to the left (1).
- ⚠ **WARNING: Do not use a wrench to loosen connection. Using a wrench could damage regulator coupling and could cause a leak.**



FOR NG UNITS:

- A) Slide back collar of the quick-disconnect to remove hose from gas source.

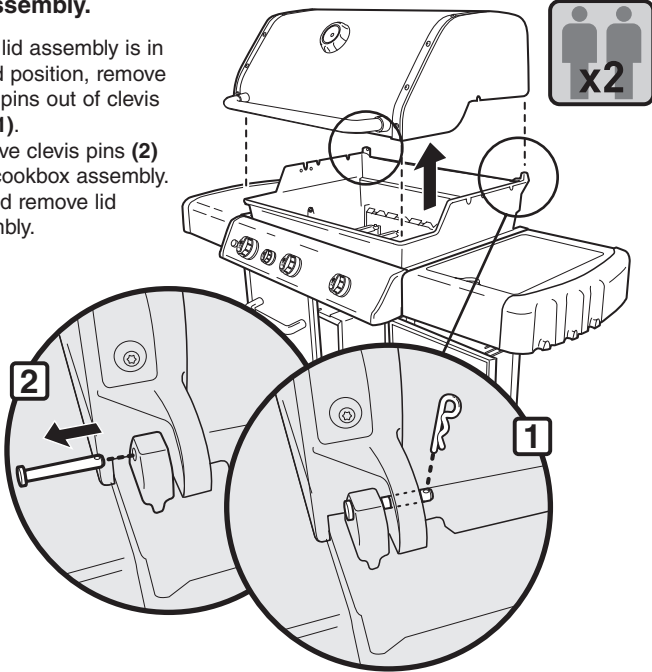


2

LID ASSEMBLY REMOVAL

CAUTION: Two people are required to lift and remove lid assembly.

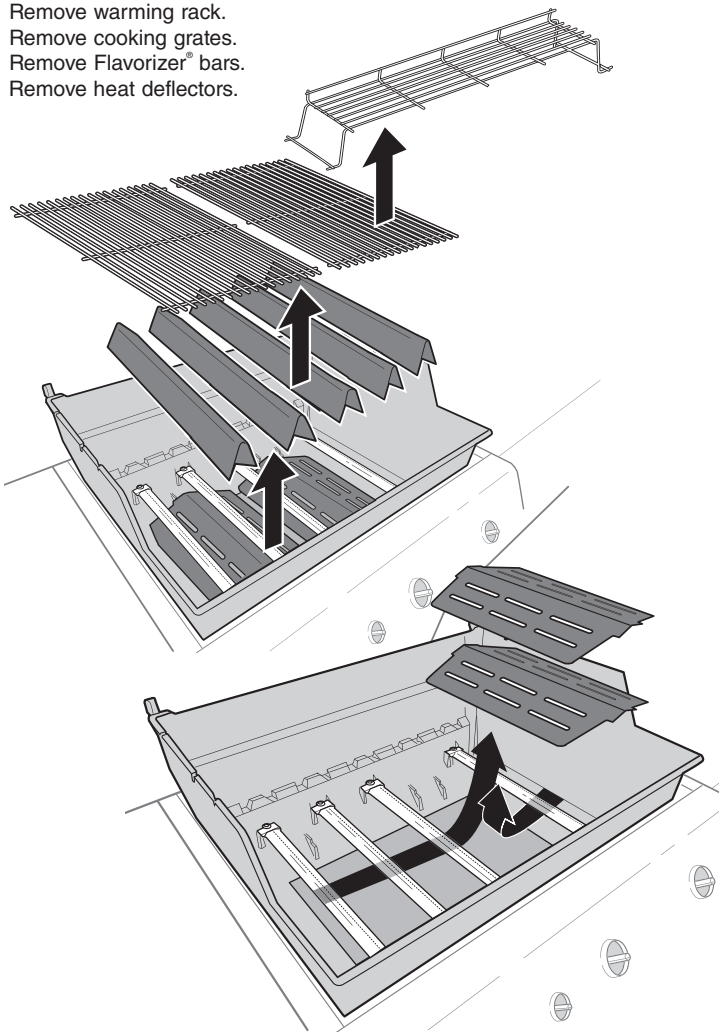
- While lid assembly is in closed position, remove cotter pins out of clevis pins (1).
- Remove clevis pins (2) from cookbox assembly.
- Lift and remove lid assembly.



3

COOKBOX COMPONENTS REMOVAL

- Remove warming rack.
- Remove cooking grates.
- Remove Flavorizer® bars.
- Remove heat deflectors.



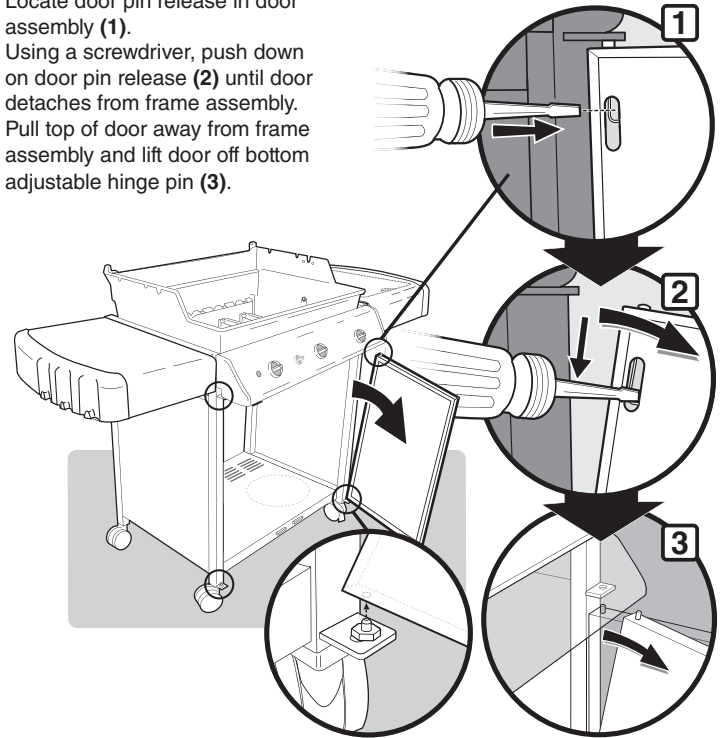
4

DOOR REMOVAL

TOOLS NEEDED:

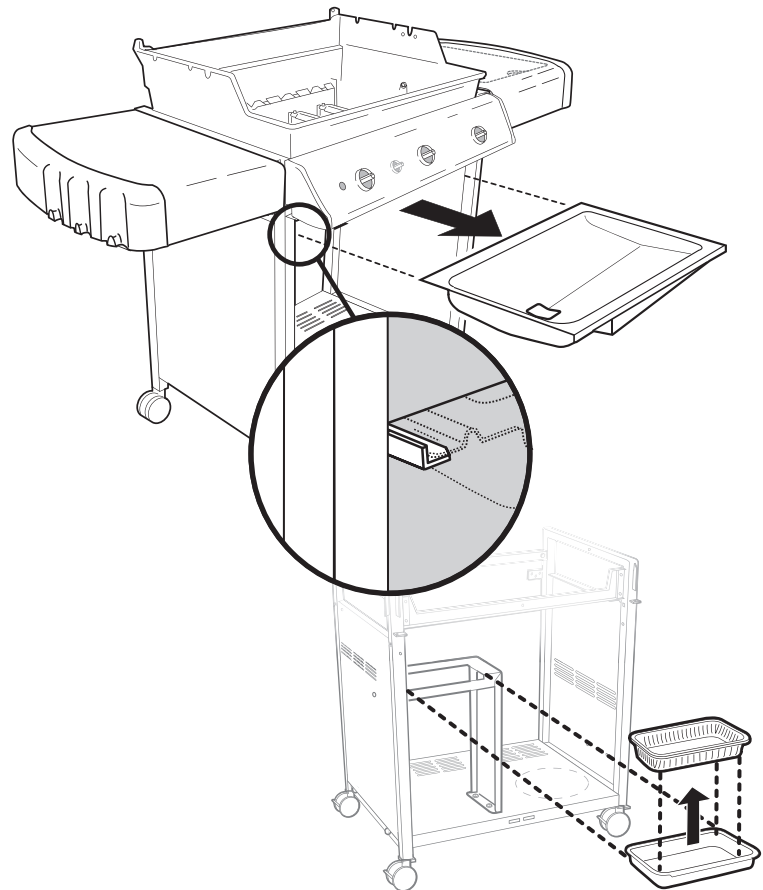


- Locate door pin release in door assembly (1).
- Using a screwdriver, push down on door pin release (2) until door detaches from frame assembly.
- Pull top of door away from frame assembly and lift door off bottom adjustable hinge pin (3).



5

GREASE TRAY / DRIP PAN REMOVAL



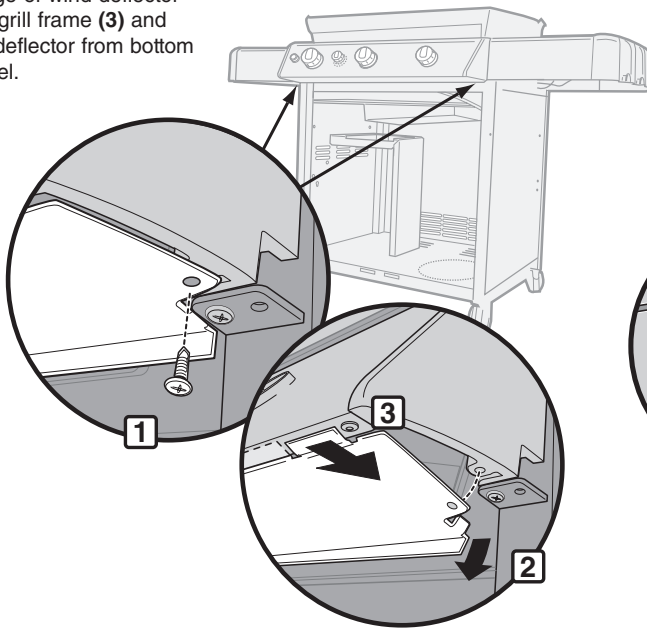
6

WIND DEFLECTOR REMOVAL

TOOLS NEEDED:



- A) Locate Phillips head screws under control panel.
- B) Remove screws that secure wind deflector to control panel (1) with a Phillips head screwdriver.
- C) Slide back edge of wind deflector down (2) to unlock alignment tabs.
- D) Slide front edge of wind deflector back towards grill frame (3) and remove wind deflector from bottom of control panel.



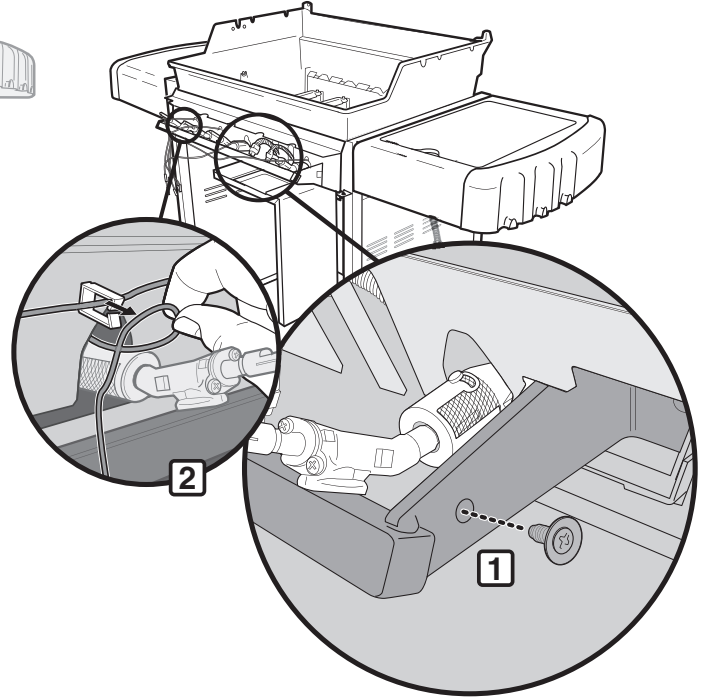
8

HEAT SHIELD REMOVAL

TOOLS NEEDED:



- A) Remove screws that secure heat shield to manifold assembly (1), using a Phillips screwdriver.
- B) Slide igniter wires out of igniter wire clips (2).
- C) Remove heat shield from manifold assembly.



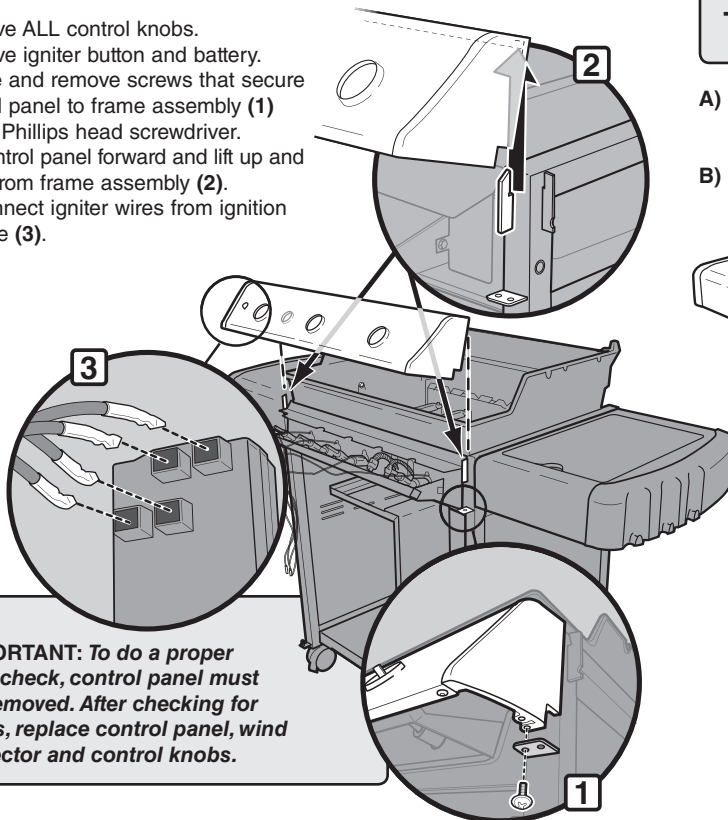
7

CONTROL PANEL REMOVAL

TOOLS NEEDED:



- A) Remove ALL control knobs.
- B) Remove igniter button and battery.
- C) Locate and remove screws that secure control panel to frame assembly (1) with a Phillips head screwdriver.
- D) Tilt control panel forward and lift up and away from frame assembly (2).
- E) Disconnect igniter wires from ignition module (3).



⚠ IMPORTANT: To do a proper leak check, control panel must be removed. After checking for leaks, replace control panel, wind deflector and control knobs.

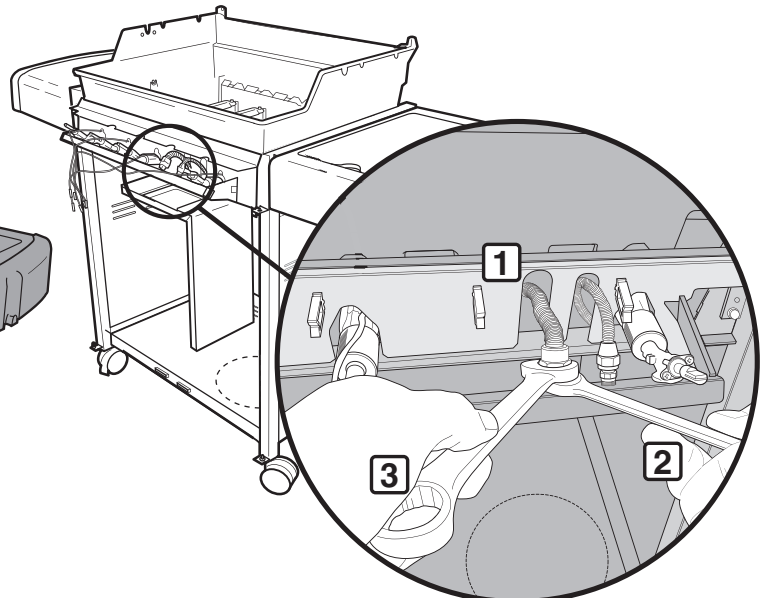
9

MAIN GAS LINE REMOVAL

TOOLS NEEDED:



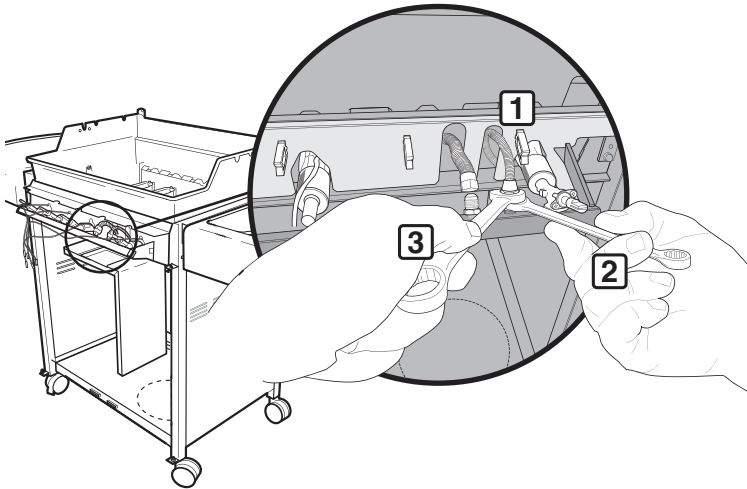
- A) Disconnect main gas line (1) by using a 5/8" wrench (2) to hold manifold fitting in place, and a 3/4" wrench (3) on gas line fitting. Turn gas line fitting counterclockwise until it releases from manifold assembly.
- B) Allow main gas line to rest on manifold assembly.




10 SIDE BURNER GAS LINE REMOVAL

TOOLS NEEDED:  - 9/16" & 7/16"

- A) *SIDE BURNER UNITS ONLY*: Disconnect side burner gas line (1) by using a 7/16" wrench (2) to hold manifold fitting in place, and a 9/16" wrench (3) on gas line fitting. Turn gas line fitting counterclockwise until it releases from manifold assembly.
- B) Allow side burner gas line to rest on manifold assembly.

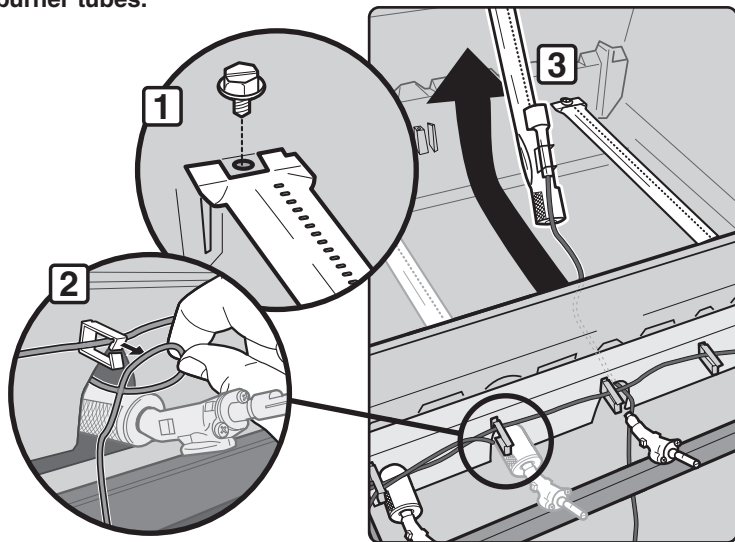


11 BURNER TUBE REMOVAL


TOOLS NEEDED:  - 5/16" NUT-DRIVER

- A) Remove screws that secure burner tubes to cookbox (1) using a 5/16" nut-driver.
- B) Remove igniter electrode wires from wire harness clips (2).
- C) Slide burner tube and igniter electrode out from inside of cookbox (3).

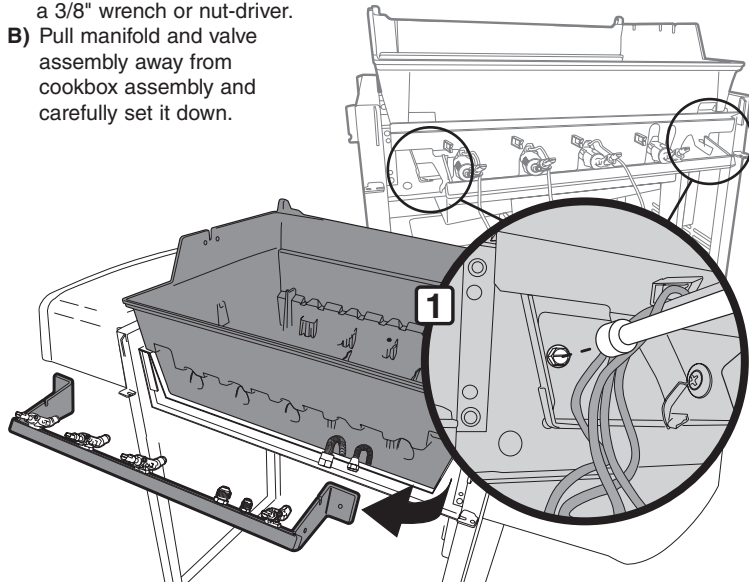
REMOVAL NOTE: Be careful not to disconnect igniter electrode assembly from mounting bracket on burner tube when removing burner tubes.



12 MANIFOLD REMOVAL


TOOLS NEEDED:  - 3/8"

- A) Remove screws that secure manifold to cookbox (1) using a 3/8" wrench or nut-driver.
- B) Pull manifold and valve assembly away from cookbox assembly and carefully set it down.

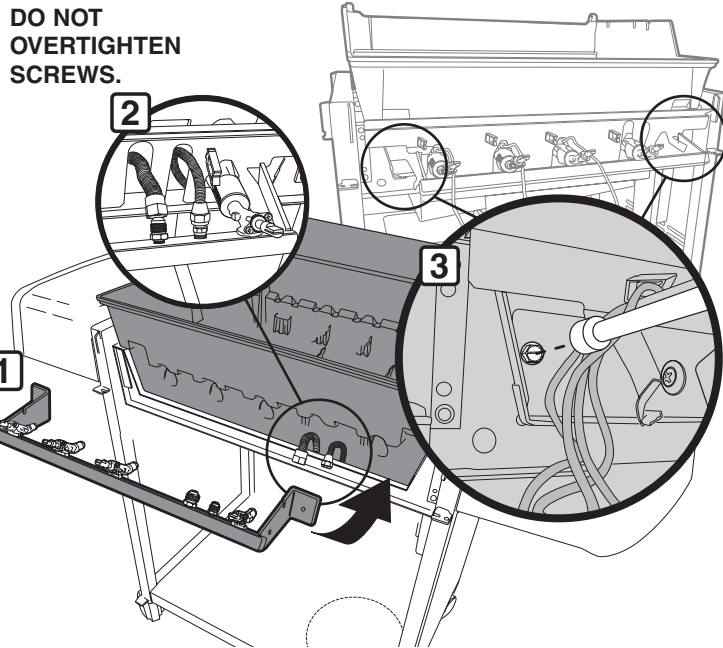


• REPLACEMENT PART INSTALLATION


13 MANIFOLD REINSTALLATION

TOOLS NEEDED:  - 3/8"

- A) Carefully place manifold and valve assembly onto cookbox assembly (1).
- REASSEMBLY NOTE:** Make sure main gas line and side burner gas line are positioned between manifold and grooves in heat shield (2).
- B) Finger tighten gas line fittings onto manifold at this time.
- C) Install self-tapping screws that secure manifold to cookbox (3) using a 3/8" wrench or nut-driver.

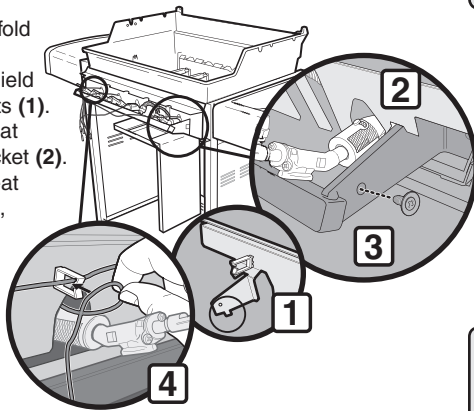


14 HEAT SHIELD REINSTALLATION

TOOLS NEEDED:  - PHILLIPS

- A) Reinstall heat shield onto manifold assembly.
- B) Position locking tabs of heat shield below manifold support brackets (1).
- C) Position the outside edge of heat shield in notch of manifold bracket (2).
- D) Reinstall screws that secure heat shield to manifold assembly (3), using a Phillips screwdriver.
- E) Slide igniter wires into igniter wire clips (4).

IMPORTANT NOTE: All igniter wires must be installed and supported in igniter wire clips in order for ignition module to function properly.

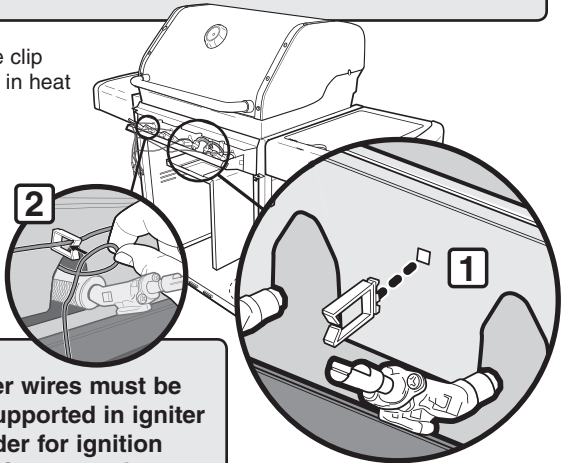


15 IGNITER WIRE CLIP INSTALLATION

IMPORTANT NOTE: This step only needs to be done if one or more igniter wire clips are missing from manifold assembly.

- A) Slide igniter wire clip into square hole in heat shield (1).
- B) Press firmly to snap igniter wire clip into place.
- C) Slide igniter electrode wires into igniter wire clips (2).

IMPORTANT NOTE: All igniter wires must be installed and supported in igniter wire clips in order for ignition module to function properly.



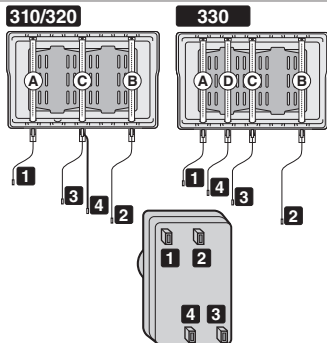
16 BURNER TUBES REINSTALLATION

TOOLS NEEDED:  - 5/16" NUT-DRIVER

- A) From inside of cookbox: Install burner tube and igniter electrode wire assemblies. Starting with far right burner tube, slide igniter electrode wire through burner tube hole in front of cookbox (1).

REASSEMBLY NOTE: Follow Burner Tube Guide for proper alignment order.

BURNER TUBE / IGNITER WIRE GUIDE 310/320/330



Burner Tube	
Left Burner (A)	
Right Burner (B)	
Center Burner (C)	
Sear Burner (D)	
Wire End & Terminal Color	
Black (1)	
Yellow (2)	
Blue (3)	
Green (Ground) (4)	

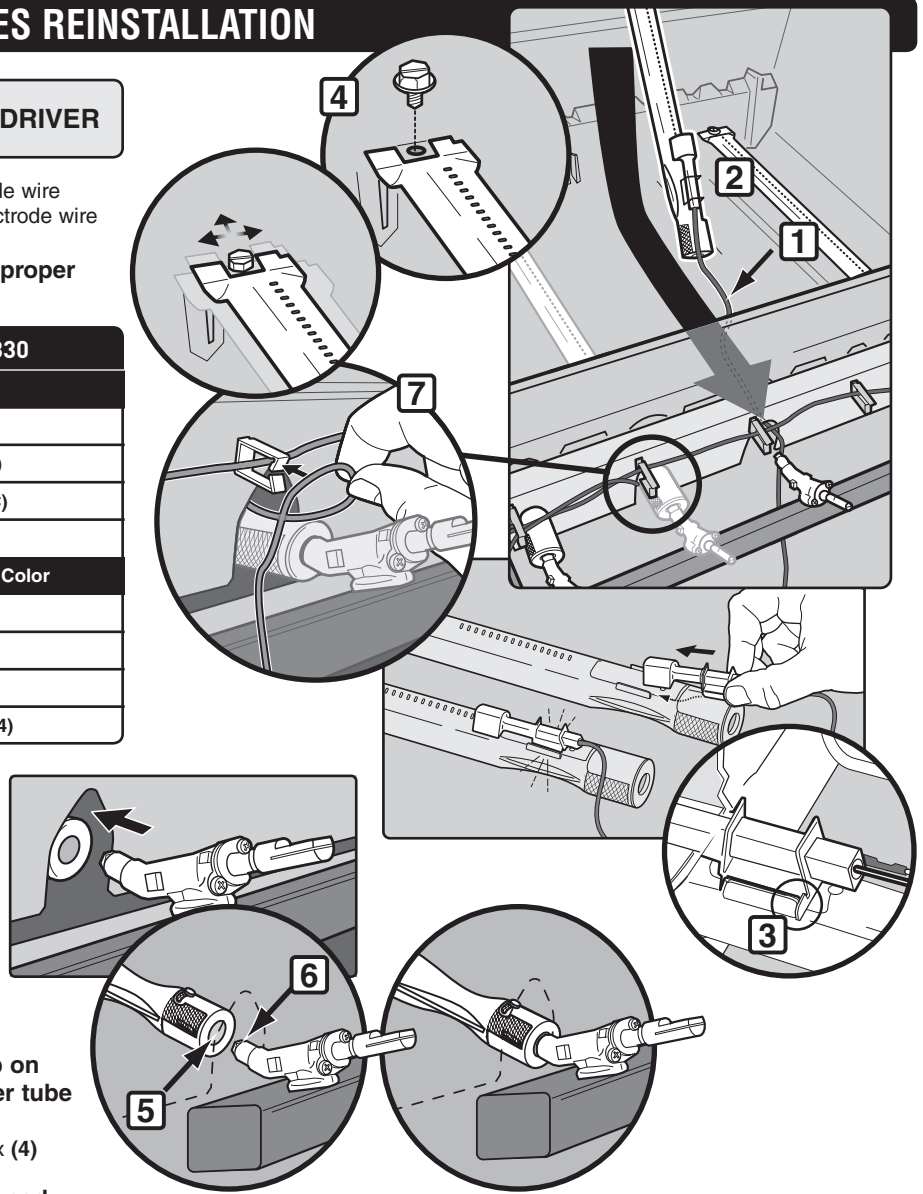
- B) Slide burner tube and igniter electrode into cookbox (2). **REASSEMBLY NOTE:** Be careful not to disconnect igniter electrode assembly from mounting bracket on burner tube. If igniter electrode assembly does slide out from mounting bracket, use your fingers to grasp rear portion of the igniter electrode assembly. Grip igniter electrode and igniter bracket together, and slide into mounting bracket on burner tube. Push igniter electrode assembly in until you hear a snap and feel it lock into place.

VISUAL CHECK: Check to see if igniter bracket stop on left back side of igniter electrode is flush with burner tube bracket (3).

- C) Install self-tapping screws that secure burner tubes to cookbox (4) using a 5/16" nut-driver. **DO NOT OVERTIGHTEN.**

CAUTION: Burner tube openings (5) must be positioned properly over valve orifices (6).

IMPORTANT NOTE: Single row of gas portholes should be facing up.

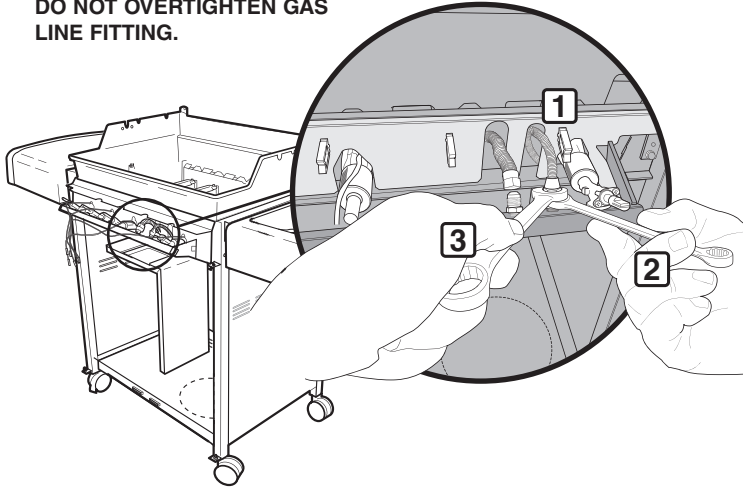


- D) Slide igniter electrode wires into igniter wire clips (7). **IMPORTANT NOTE:** All igniter wires must be installed and supported in igniter wire clips in order for ignition module to function properly.


17 SIDE BURNER GAS LINE REINSTALLATION

TOOLS NEEDED:  - 9/16", 7/16"

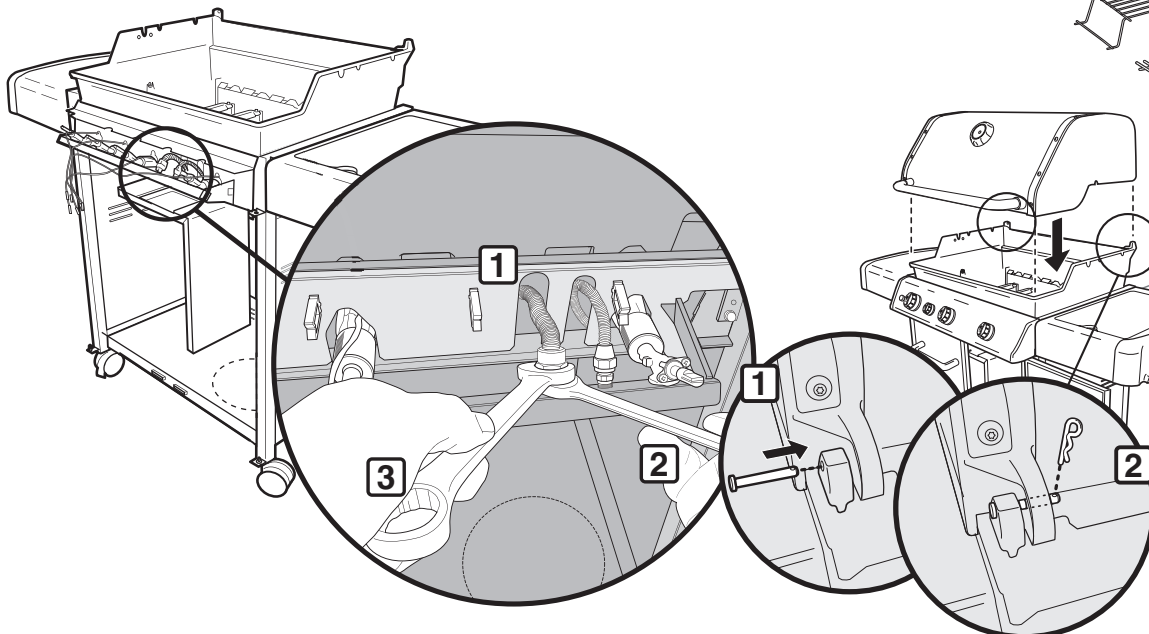
- A) *SIDE BURNER UNITS ONLY:* Finger tighten side burner gas line fitting to manifold assembly.
- B) Tighten side burner gas line (1) by using a 7/16" wrench (2) to hold manifold fitting in place, and a 9/16" wrench (3) on side burner gas line fitting. Turn side burner gas line fitting clockwise until it is tight to manifold. **DO NOT OVERTIGHTEN GAS LINE FITTING.**



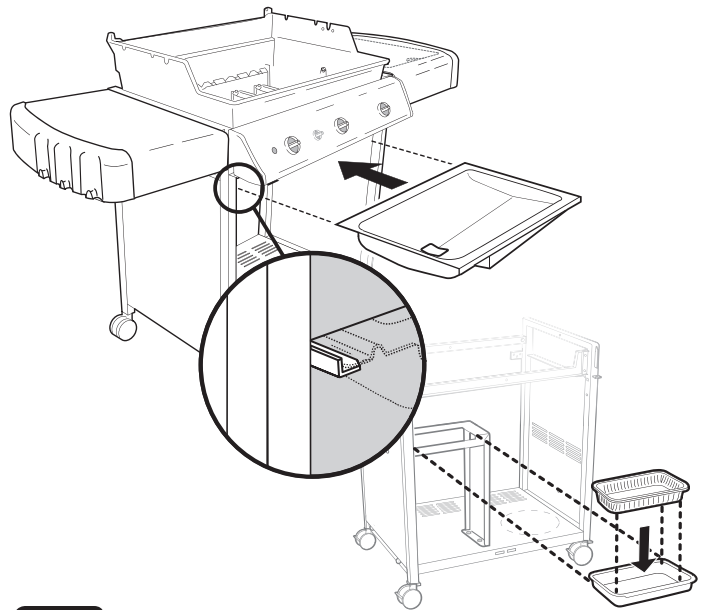
18 MAIN GAS LINE REINSTALLATION

TOOLS NEEDED:  - 3/4", 5/8"

- A) Finger tighten main gas line fitting to manifold assembly.
- B) Tighten main gas line (1) by using a 5/8" wrench (2) to hold manifold fitting in place, and a 3/4" wrench (3) on the main gas line fitting. Turn main gas line fitting clockwise until it is tight to manifold. **DO NOT OVERTIGHTEN GAS LINE FITTING.**



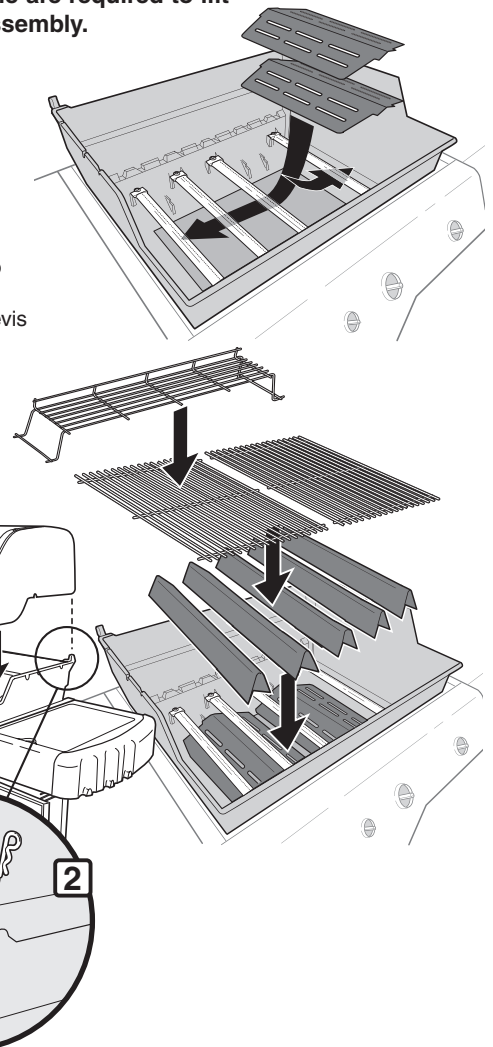
19 GREASE TRAY / DRIP PAN REINSTALLATION



20 LID AND COOKBOX COMPONENTS REINSTALLATION

CAUTION: Two people are required to lift and install the lid assembly.

- A) Install heat deflectors.
- B) Install Flavorizer® bars.
- C) Install cooking grates.
- D) Install warming rack.
- E) Place lid assembly onto cookbox assembly.
- F) While lid assembly is in the closed position, install clevis pins (1) into cookbox assembly.
- G) Install cotter pins into clevis pins (2).



WARNING: Make sure all control knobs are turned to the OFF position before reconnecting gas supply and operating grill. Your actions, if you fail to follow this Product Warning, may cause a fire, an explosion, or structural failure resulting in serious personal injury or death as well as damage to property.

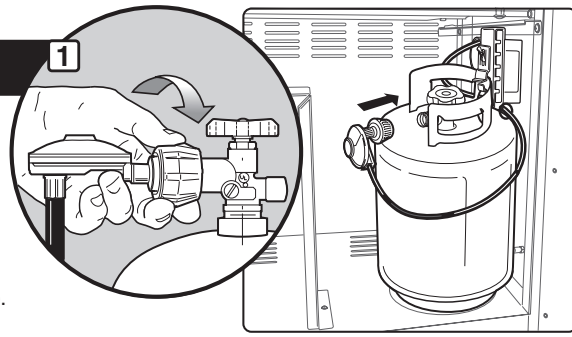
21 HOSE TO GAS SOURCE CONNECTION

FOR LP UNITS:

⚠ WARNING: Hose must be secured to tank scale with hose retention clip. Failure to do so could cause damage to the hose resulting in a fire or explosion which can cause serious bodily injury or death, and damage to property.

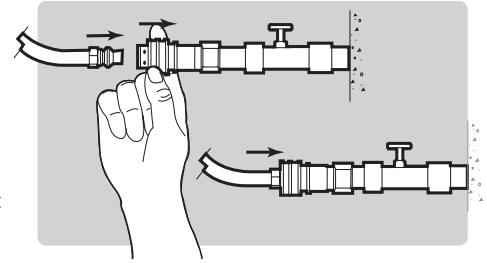
A) Screw regulator coupling onto tank valve; turn clockwise, or to the right (1).

⚠ WARNING: Do not use a wrench to tighten connection. Using a wrench could damage regulator coupling and could cause a leak.



FOR NG UNITS:

A) Slide back collar of quick-disconnect and reconnect natural gas hose.



22 CHECK FOR GAS LEAKS

⚠ DANGER

Do not use an open flame to check for gas leaks. Be sure there are no sparks or open flames in the area while you check for leaks. Sparks or open flames will result in a fire or explosion, which can cause serious bodily injury or death and damage to property.

⚠ IMPORTANT: To do a proper leak check, control panel must be off. After checking for leaks replace control panel, wind deflector and control knobs.

You will need: a soap and water solution and a rag or brush to apply it.

- A) Mix soap and water.
- B) Turn on gas supply at source.
- C) Check for leaks by wetting fittings with soap and water solution and watching for bubbles. If bubbles form, or if a bubble grows, there is a leak.
- D) When leak checking is complete, turn gas supply off at source and rinse connections with water.

Check:

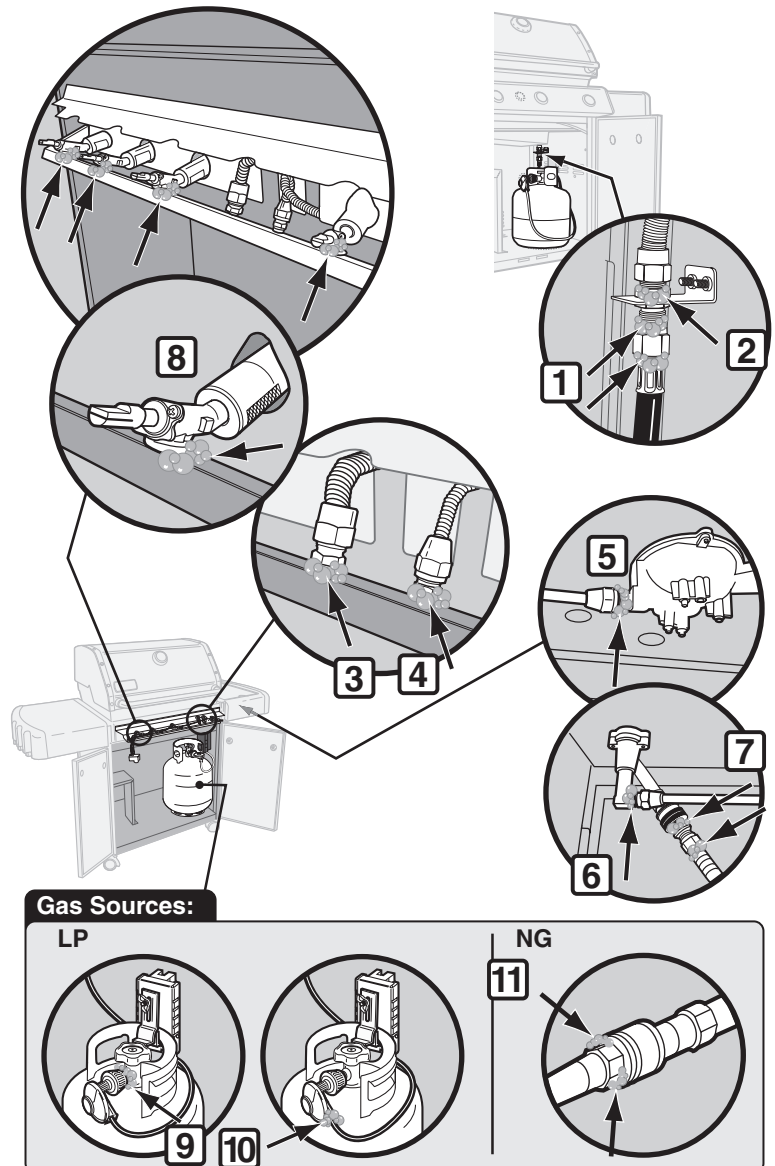
- E) Regulator hose-to-bulkhead connections (1).
- F) Main gas line-to-bulkhead connection (2).
- G) Main gas line-to-manifold connection (3).
- H) Side burner gas line-to-manifold connection (4).
- I) Side burner pipe fitting-to-side burner cup (5).
- J) Side burner pipe fitting-to-side burner valve connection (6).

⚠ WARNING: If there is a leak at connection (1, 2, 3, 4, 5 or 6), retighten the fitting with a wrench and recheck for leaks with soap and water solution. If a leak persists after re-tightening the fitting, turn OFF the gas. **DO NOT OPERATE THE GRILL.** Failure to follow dangers, warnings and cautions contained in this Instruction sheet may cause a fire or an explosion resulting in serious personal injury or death as well as damage to property. Contact the Customer Service Representative in your area using the contact information on our web site. Log onto www.weber.com.


- K) Side burner quick-disconnect connection (7).
- L) Valves-to-manifold connections (8).
- M) LP: Regulator hose-to-cylinder connection (9).
- N) LP: Regulator hose-to-regulator connection (10).
- O) NG: Hose-to-quick-disconnect gas line connection (11).

⚠ WARNING: If there is a leak at connections (7, 8, 9, 10 or 11), turn OFF the gas. **DO NOT OPERATE THE GRILL.** Failure to follow dangers, warnings and cautions contained in this Instruction sheet may cause a fire or an explosion resulting in serious personal injury or death as well as damage to property. Contact the Customer Service Representative in your area using the contact information on our web site. Log onto www.weber.com.

When leak checks are complete, turn gas supply OFF at source and rinse connections with water.



23 CONTROL PANEL REINSTALLATION

TOOLS NEEDED:  - PHILLIPS

⚠ **IMPORTANT:** To do a proper leak check, control panel must be removed. After checking for leaks reinstall control panel, wind deflector and control knobs.

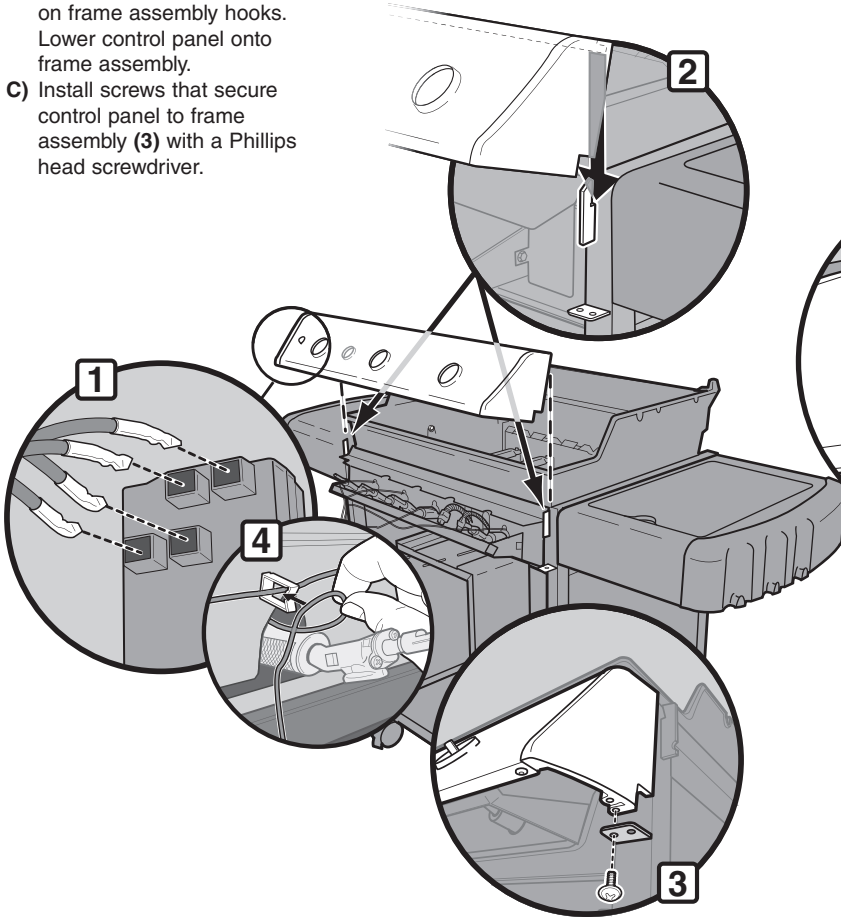
A) Connect igniter wires to ignition module (1) before installing control panel.

REASSEMBLY NOTE: Follow Igniter Module Wire Guide for proper alignment order.


B) Tilt front edge of control panel up (2) and hook back edge of control panel on frame assembly hooks.

Lower control panel onto frame assembly.

C) Install screws that secure control panel to frame assembly (3) with a Phillips head screwdriver.



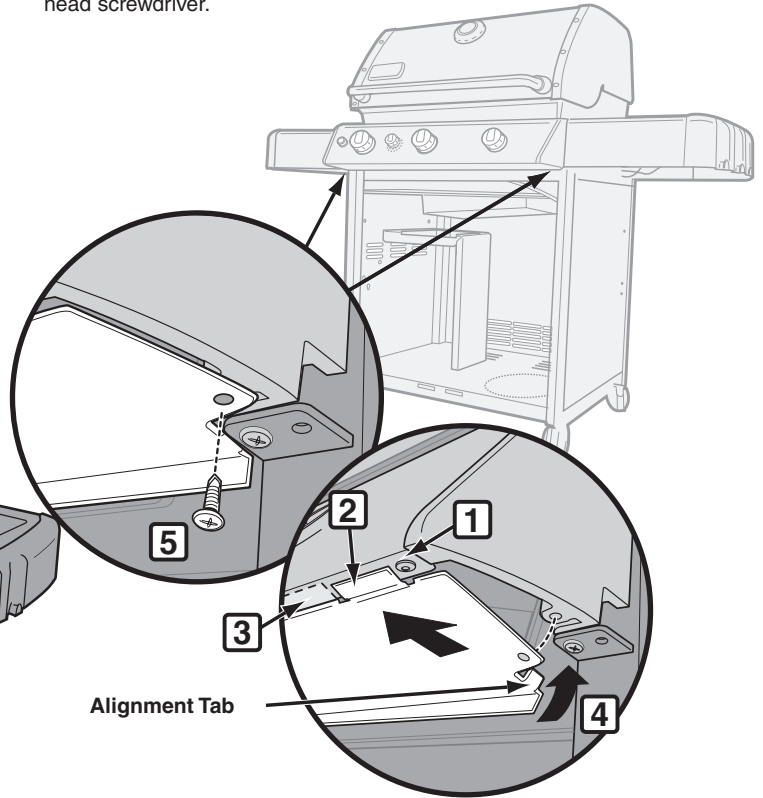
24 WIND DEFLECTOR REINSTALLATION

TOOLS NEEDED:  - PHILLIPS

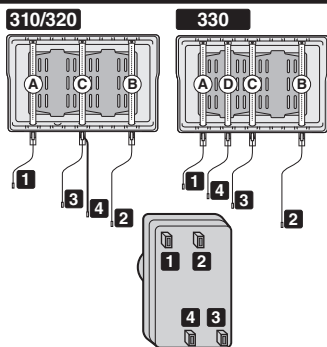
A) Position front edge of wind deflector onto bottom lip of control panel (1). Position both outer short tabs of wind deflector **below** control panel lip (2), while placing inner long tab **above** control panel lip (3). **The bottom lip of control panel will be sandwiched between the wind deflector tabs.**

B) Slide back edge of wind deflector up (4) to lock alignment tabs into place.

C) Install screws that secure wind deflector to control panel (5) with a Phillips head screwdriver.



IGNITER MODULE WIRE GUIDE 310/320/330



Burner Tube	
Left Burner (A)	
Right Burner (B)	
Center Burner (C)	
Center Burner (D)	
Wire End & Terminal Color	
Black (1)	
Yellow (2)	
Blue (3)	
Green (Ground) (4)	

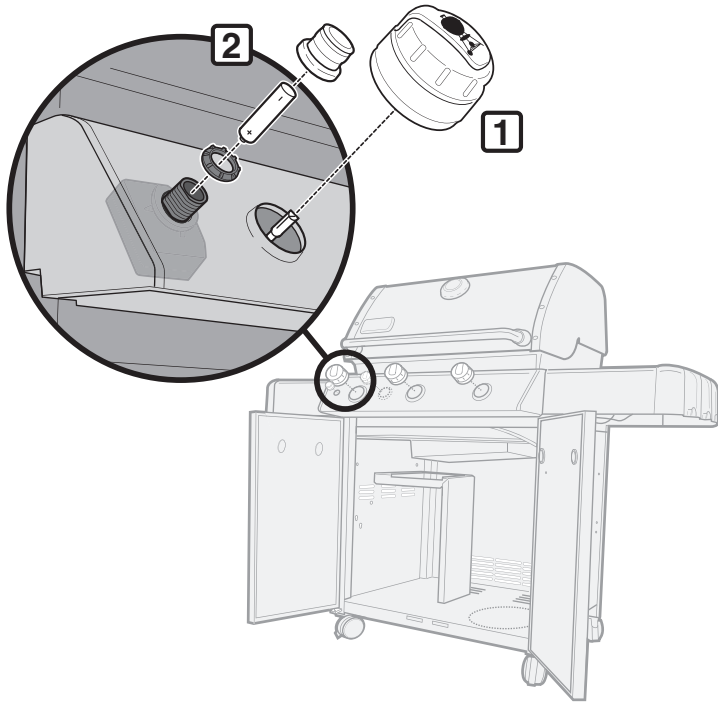
D) Slide igniter wires into igniter wire clips (4).

IMPORTANT NOTE: All igniter wires must be installed and supported in igniter wire clips (4) in order for ignition module to function properly.

25 CONTROL KNOB REINSTALLATION

- A) Install ALL control knobs (1).
- B) Install igniter button and battery (2).

⚠ IMPORTANT NOTE: If it has been a year since battery was changed, this would be a good time to replace it.



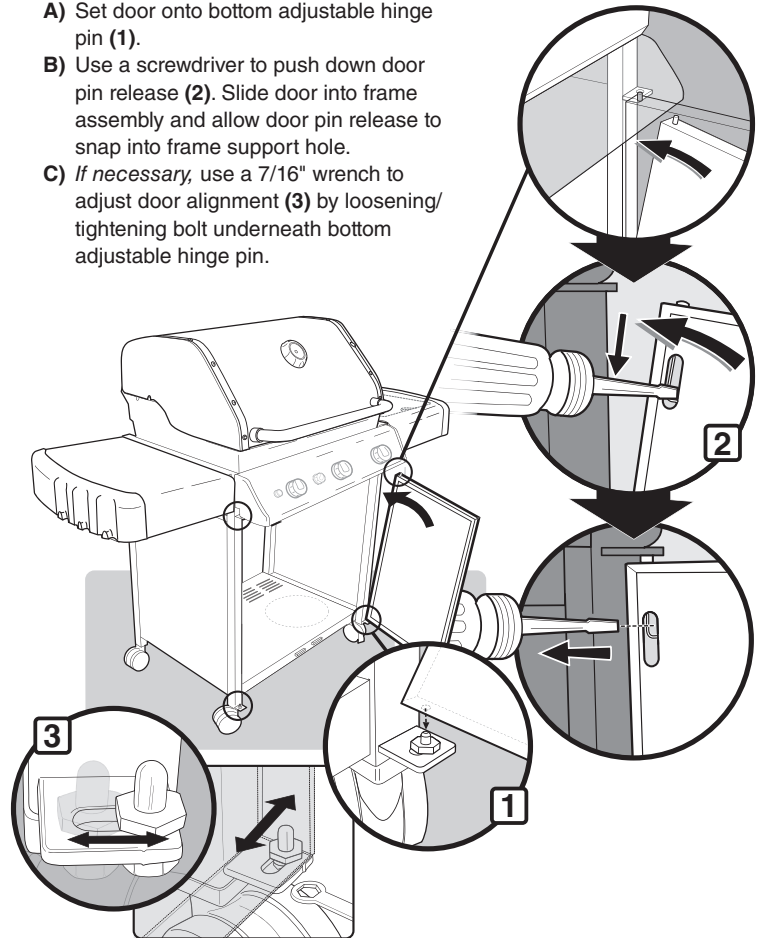
⚠ WARNING: Make sure all control knobs are turned to the OFF position before reconnecting gas supply and operating grill. Your actions, if you fail to follow this Product Warning, may cause a fire, an explosion, or structural failure resulting in serious personal injury or death as well as damage to property.

26 DOOR REINSTALLATION

TOOLS NEEDED:



- A) Set door onto bottom adjustable hinge pin (1).
- B) Use a screwdriver to push down door pin release (2). Slide door into frame assembly and allow door pin release to snap into frame support hole.
- C) *If necessary*, use a 7/16" wrench to adjust door alignment (3) by loosening/tightening bolt underneath bottom adjustable hinge pin.



⚠ WARNING: Make sure all parts are assembled and hardware is fully tightened before operating the grill. Your actions, if you fail to follow this product warning, may cause a fire, an explosion, or structural failure resulting in serious personal injury or death as well as damage to property.

⚠ PROPOSITION 65 WARNING: HANDLING THE BRASS MATERIAL ON THIS PRODUCT EXPOSES YOU TO LEAD, A CHEMICAL KNOWN TO THE STATE OF CALIFORNIA TO CAUSE CANCER, BIRTH DEFECTS OR OTHER REPRODUCTIVE HARM.

(WASH HANDS AFTER HANDLING THIS PRODUCT.)

⚠ WARNING: All repairs to gas carrying, gas burning, igniter or structural components must be performed by an authorized Weber-Stephen Products LLC service technician.

These parts may be gas carrying, gas burning, igniter or structural components. Please contact Weber-Stephen Products LLC, Customer Service Department for Genuine Weber-Stephen Products LLC replacement part(s) information.

⚠ WARNING: Do not attempt to make any repair to gas carrying, gas burning, igniter or structural components without contacting Weber-Stephen Products LLC, Customer Service Department. Your actions, if you fail to follow this Product Warning, may cause a fire, an explosion, or structural failure resulting in serious personal injury or death as well as damage to property.

Visit



WEBER-STEPHEN PRODUCTS LLC
www.weber.com[®]

For All of Your Grilling Needs



WEBER-STEPHEN PRODUCTS LLC
Customer Service Center
1890 Roselle Road, Suite 308
Schaumburg, IL 60195

1-800-446-1071 (USA ONLY)
www.weber.com