



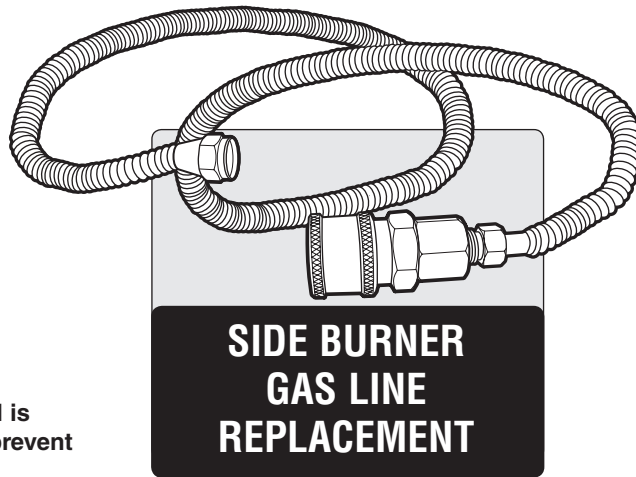
**GENESIS®**

# SIDE BURNER GAS LINE REPLACEMENT INSTRUCTIONS

**THIS PROCEDURE SHOULD ONLY BE PERFORMED BY AN AUTHORIZED WEBER-STEPHEN PRODUCTS LLC SERVICE TECHNICIAN**

**⚠ WARNING: GENUINE WEBER-STEPHEN REPLACEMENT PARTS MUST BE USED FOR ANY REPAIR OR REPLACEMENT. YOUR ACTIONS, IF YOU FAIL TO FOLLOW THIS PRODUCT WARNING, MAY CAUSE A FIRE, AN EXPLOSION, OR STRUCTURAL FAILURE RESULTING IN SERIOUS PERSONAL INJURY OR DEATH AS WELL AS DAMAGE TO PROPERTY. (WILL VOID ALL WARRANTY PROTECTION.)**

**⚠ DANGER: BEFORE PERFORMING ANY WORK MAKE SURE THE GAS SUPPLY IS TURNED OFF AT THE SOURCE. FAILURE TO FOLLOW DANGERS, WARNINGS AND CAUTIONS CONTAINED IN THIS INSTRUCTION SHEET MAY CAUSE A FIRE OR AN EXPLOSION RESULTING IN SERIOUS PERSONAL INJURY OR DEATH AS WELL AS DAMAGE TO PROPERTY.**

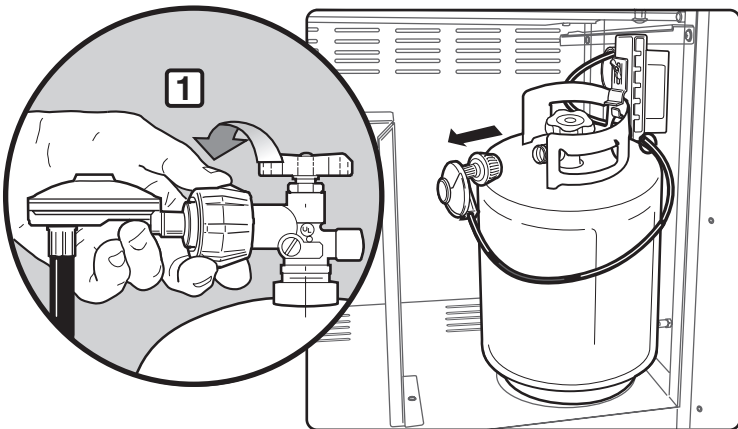


**⚠ BEFORE STARTING:** Make sure lid is closed and casters are locked to prevent grill from moving.

## **1** HOSE FROM GAS SOURCE DISCONNECTION

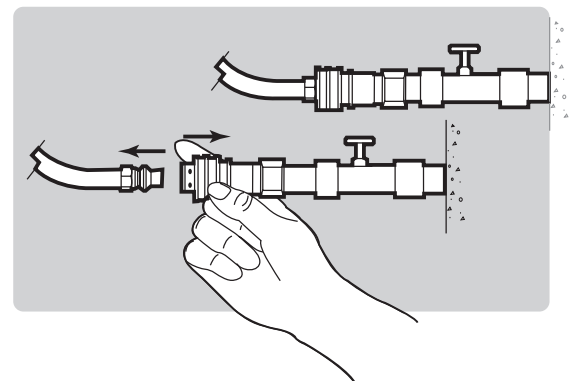
**FOR LP UNITS:**

- A) Unscrew regulator coupling from tank valve; turn counter-clockwise, or to the left (1).
- ⚠ WARNING: Do not use a wrench to loosen connection. Using a wrench could damage regulator coupling and could cause a leak.**



**FOR NG UNITS:**

- A) Slide back collar of the quick-disconnect to remove hose from gas source.



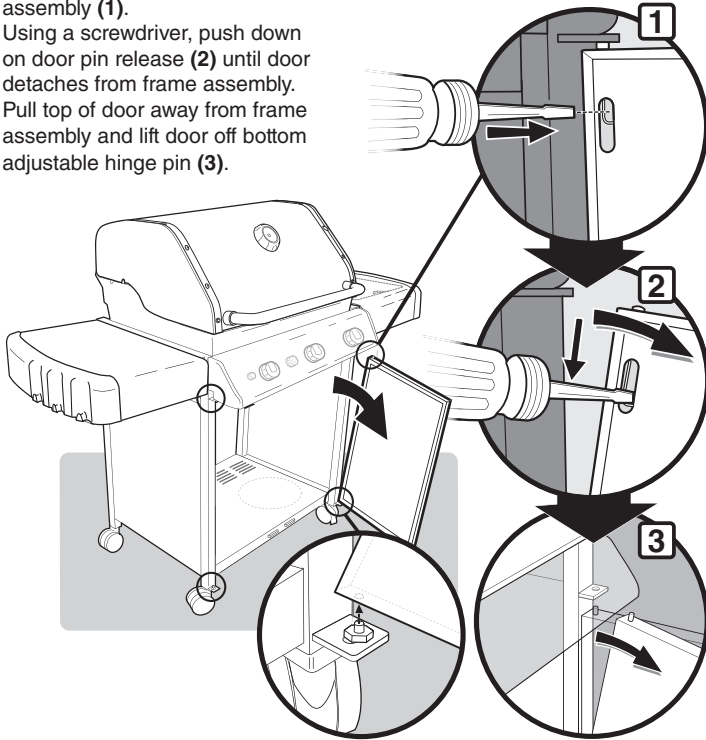
## 2

### DOOR REMOVAL

TOOLS NEEDED:

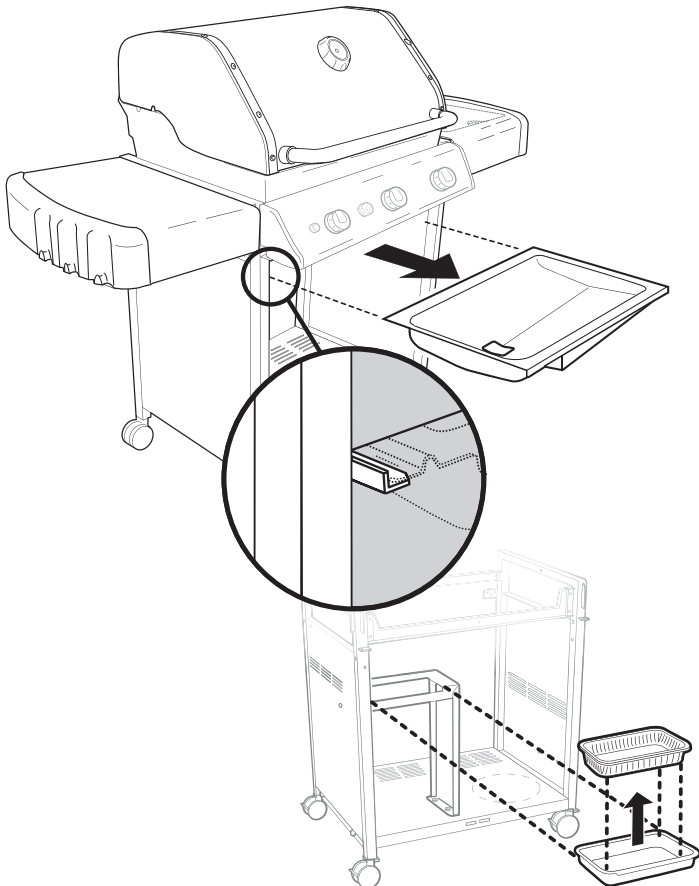


- A) Locate door pin release in door assembly (1).
- B) Using a screwdriver, push down on door pin release (2) until door detaches from frame assembly.
- C) Pull top of door away from frame assembly and lift door off bottom adjustable hinge pin (3).



## 3

### GREASE TRAY / DRIP PAN REMOVAL



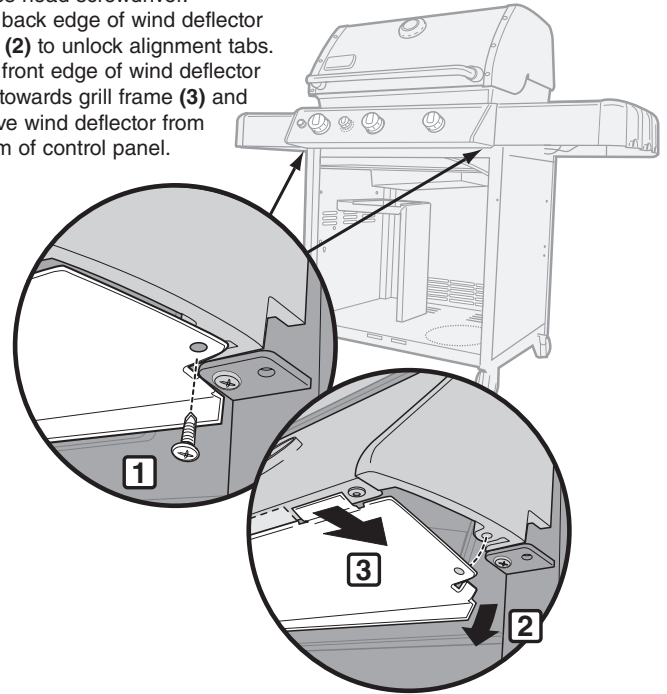
## 4

### WIND DEFLECTOR REMOVAL

TOOLS NEEDED:



- A) Locate Phillips head screws under control panel.
- B) Remove screws that secure wind deflector to control panel (1) with a Phillips head screwdriver.
- C) Slide back edge of wind deflector down (2) to unlock alignment tabs.
- D) Slide front edge of wind deflector back towards grill frame (3) and remove wind deflector from bottom of control panel.



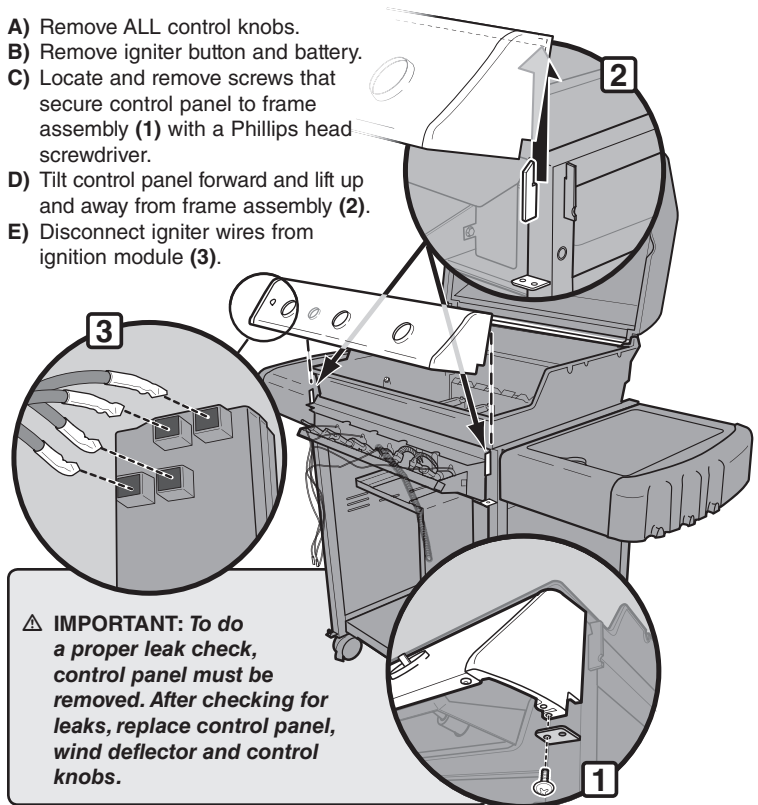
## 5

### CONTROL PANEL REMOVAL

TOOLS NEEDED:



- A) Remove ALL control knobs.
- B) Remove igniter button and battery.
- C) Locate and remove screws that secure control panel to frame assembly (1) with a Phillips head screwdriver.
- D) Tilt control panel forward and lift up and away from frame assembly (2).
- E) Disconnect igniter wires from ignition module (3).



**⚠ IMPORTANT:** To do a proper leak check, control panel must be removed. After checking for leaks, replace control panel, wind deflector and control knobs.

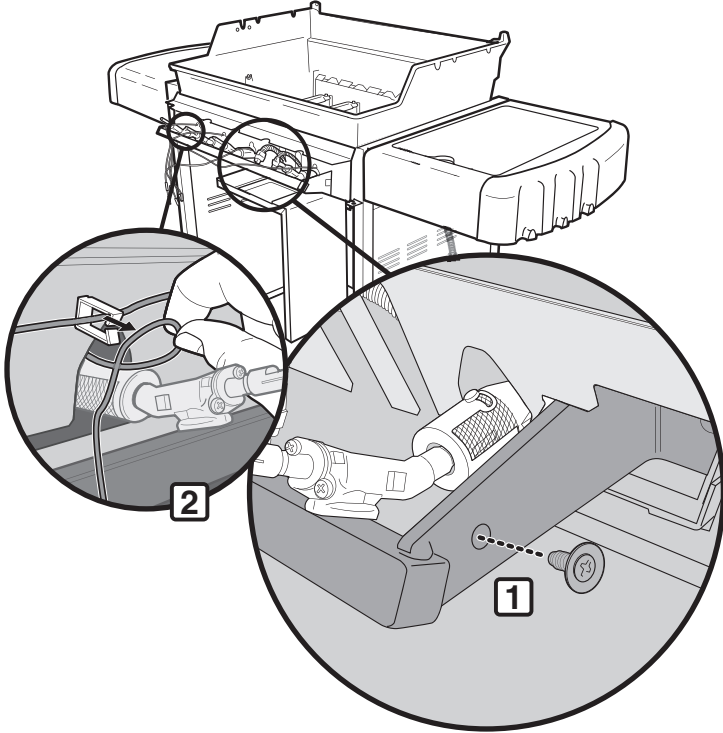
# 6

## HEAT SHIELD REMOVAL

TOOLS NEEDED:



- A) Remove screws that secure heat shield to manifold assembly (1), using a Phillips screwdriver.
- B) Slide igniter wires out of igniter wire clips (2).
- C) Remove heat shield from manifold assembly.



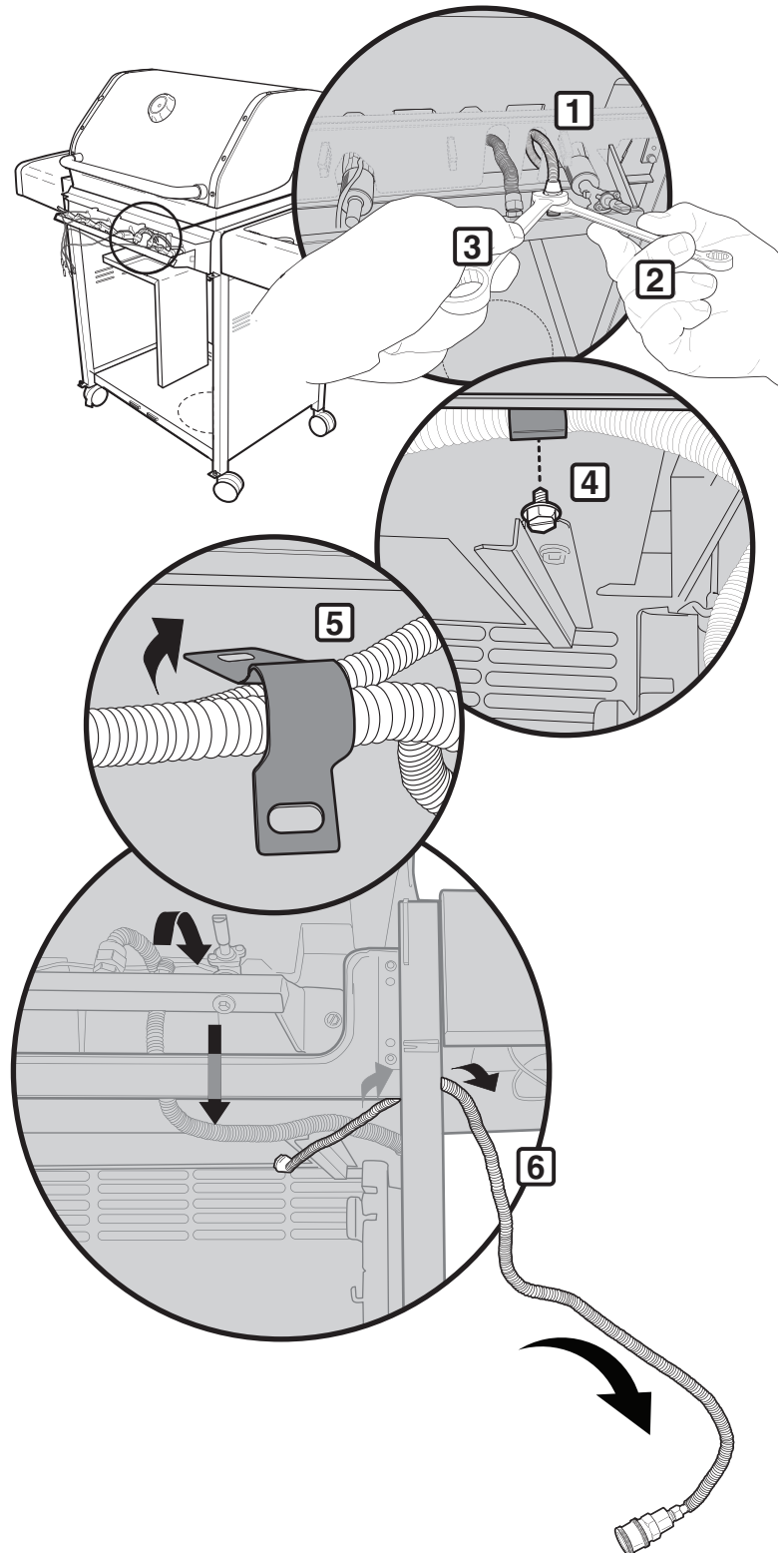
# 7

## SIDE BURNER GAS LINE REMOVAL

TOOLS NEEDED:



- A) Disconnect side burner gas line (1) by using a 7/16" wrench (2) to hold manifold fitting in place, and a 9/16" wrench (3) on gas line fitting. Turn gas line fitting counterclockwise until it releases from manifold assembly.
- B) Allow side burner gas line to rest on manifold assembly.
- C) Locate and remove hose bracket securing main gas line and side burner gas line to underside of cookbox (4), using a 5/16" wrench or nut-driver.
- D) Remove hose bracket from gas lines (5).
- E) Remove side burner gas from grill assembly (6).



## • REPLACEMENT PART INSTALLATION

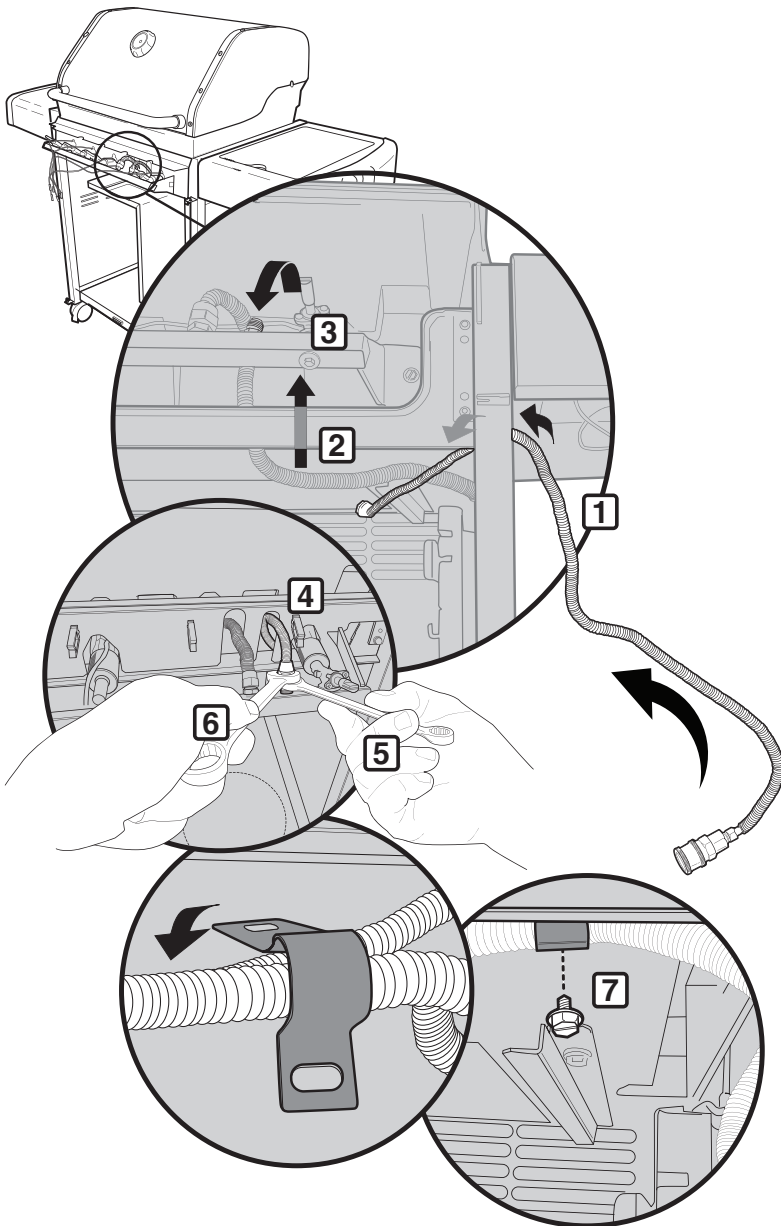
### 8 SIDE BURNER GAS LINE INSTALLATION

**TOOLS NEEDED:**  - 9/16", 7/16", 5/16"


**REASSEMBLY NOTE:** When attaching side burner gas line to manifold fitting, carefully form a gradual bend in side burner gas line (not pictured).

**DO NOT KINK OR CRIMP SIDE BURNER GAS LINE.**

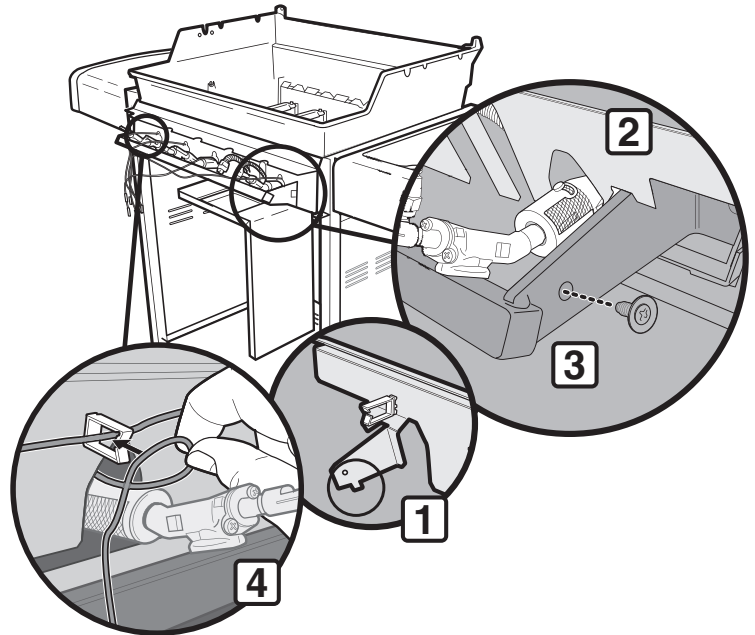
- Insert side burner gas line into grill assembly (1). **BE CAREFUL TO PLACE SIDE BURNER GAS LINE BEHIND FRONT FRAME SUPPORT (2) AND BETWEEN MANIFOLD AND COOKBOX ASSEMBLY (3).**
- Finger tighten gas line fitting to manifold assembly.
- Tighten side burner gas line (4) by using a 7/16" wrench (5) to hold manifold fitting in place, and a 9/16" wrench (6) on the gas line fitting. Turn gas line fitting clockwise until tight to manifold. **DO NOT OVERTIGHTEN GAS LINE FITTING.**
- Install hose bracket securing main gas line and side burner gas line to cookbox (7), using a 5/16" wrench or nut-driver.



### 9 HEAT SHIELD REINSTALLATION

**TOOLS NEEDED:**  - PHILLIPS

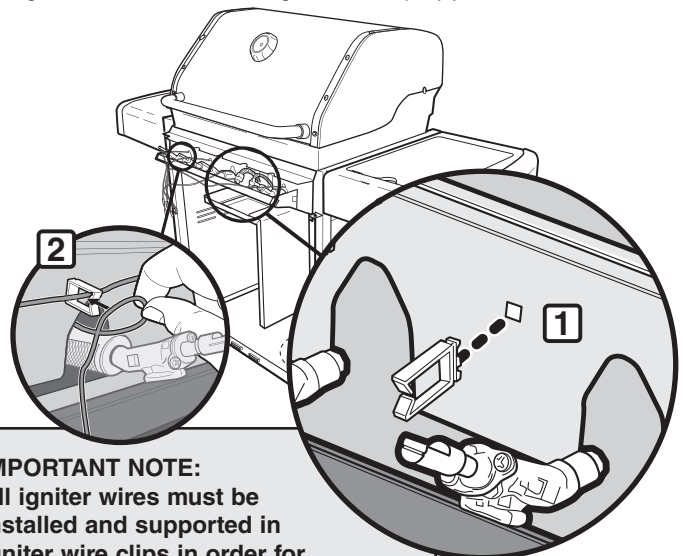
- Reinstall heat shield onto manifold assembly.
  - Position locking tabs of heat shield below manifold support brackets (1).
  - Position the outside edge of heat shield in notch of manifold bracket (2).
  - Reinstall screws that secure heat shield to manifold assembly (3), using a Phillips screwdriver.
  - Slide igniter wires into igniter wire clips (4).
- IMPORTANT NOTE:** All igniter wires must be installed and supported in igniter wire clips in order for ignition module to function properly.



### 10 IGNITER WIRE CLIP INSTALLATION

**IMPORTANT NOTE:** This step only needs to be done if one or more igniter wire clips are missing from manifold assembly.

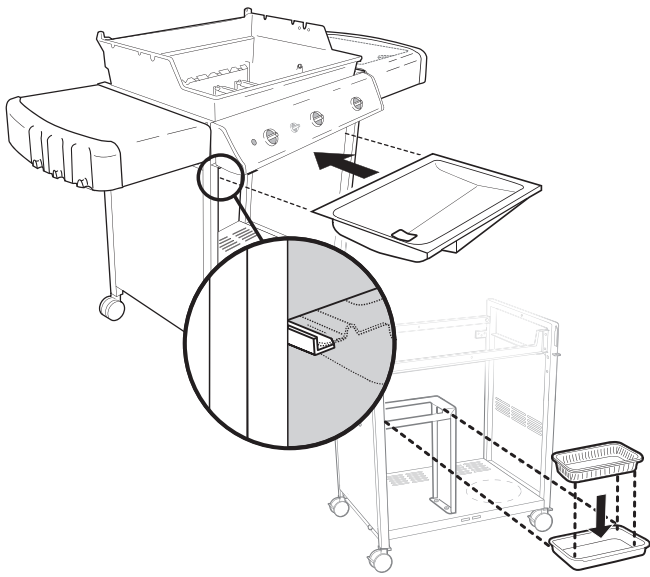
- Slide igniter wire clip into square hole in heat shield (1).
- Press firmly to snap igniter wire clip into place.
- Slide igniter electrode wires into igniter wire clips (2).



**IMPORTANT NOTE:** All igniter wires must be installed and supported in igniter wire clips in order for ignition module to function properly.



# 11 GREASE TRAY / DRIP PAN REINSTALLATION



**⚠ WARNING:** Make sure all control knobs are turned to the OFF position before reconnecting gas supply and operating grill. Your actions, if you fail to follow this Product Warning, may cause a fire, an explosion, or structural failure resulting in serious personal injury or death as well as damage to property.

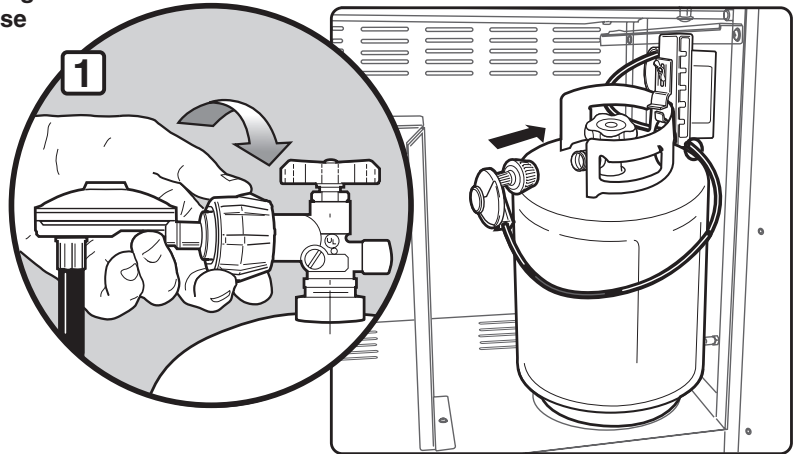
# 12 HOSE TO GAS SOURCE CONNECTION

FOR LP UNITS:

**⚠ WARNING:** Hose must be secured to tank scale with hose retention clip. Failure to do so could cause damage to the hose resulting in a fire or explosion which can cause serious bodily injury or death, and damage to property.

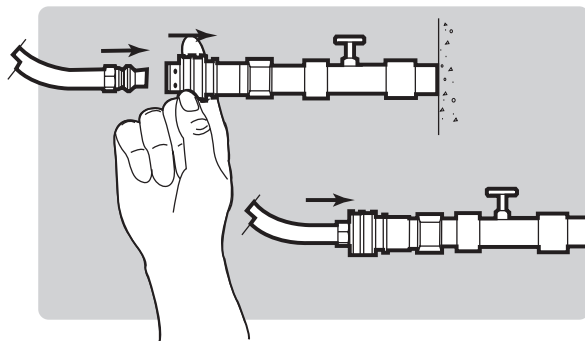
A) Screw regulator coupling onto tank valve; turn clockwise, or to the right (1).

**⚠ WARNING:** Do not use a wrench to tighten connection. Using a wrench could damage regulator coupling and could cause a leak.



FOR NG UNITS:

A) Slide back collar of quick-disconnect and reconnect natural gas hose.



**⚠ WARNING: Make sure all control knobs are turned to the OFF position before reconnecting gas supply and operating grill. Your actions, if you fail to follow this Product Warning, may cause a fire, an explosion, or structural failure resulting in serious personal injury or death as well as damage to property.**

# 13

## CHECK FOR GAS LEAKS

### ⚠ DANGER

Do not use an open flame to check for gas leaks. Be sure there are no sparks or open flames in the area while you check for leaks. Sparks or open flames will result in a fire or explosion, which can cause serious bodily injury or death and damage to property.

You will need: a soap and water solution and a rag or brush to apply it.

- A) Mix soap and water.
- B) Turn on gas supply at source.
- C) Check for leaks by wetting fitting with soap and water solution and watching for bubbles. If bubbles form, or if a bubble grows, there is a leak.
- D) When leak checking is complete, turn gas supply off at source and rinse connections with water.

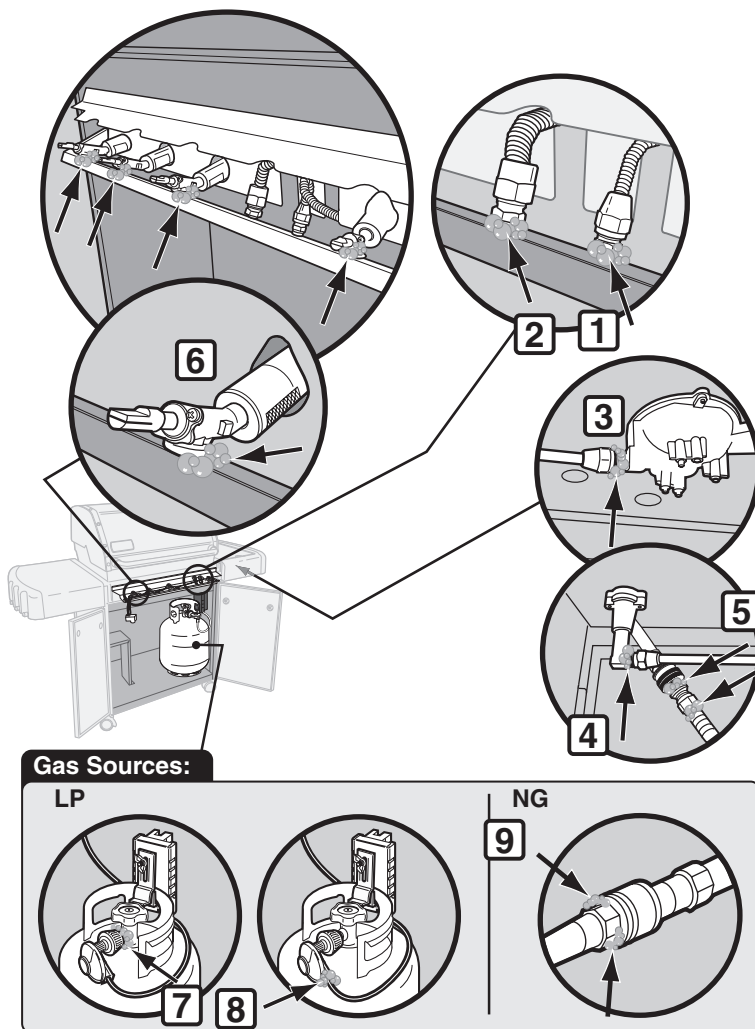
### Check:

- E) Side burner gas line-to-manifold connection (1).
- F) Main gas line-to-manifold connection (2).
- G) Side burner pipe fitting-to-side burner cup (3).
- H) Side burner pipe fitting-to-side burner valve connections (4).
- ⚠ **WARNING: If there is a leak at connection (1, 2, 3, or 4), retighten fitting with a wrench and recheck for leaks with soap and water solution. If a leak persists after re-tightening the fitting, turn OFF the gas. DO NOT OPERATE THE GRILL. Failure to follow dangers, warnings and cautions contained in this Instruction sheet may cause a fire or an explosion resulting in serious personal injury or death as well as damage to property. Contact the Customer Service Representative in your area using the contact information on our web site. Log onto [www.weber.com](http://www.weber.com).**


- I) Side burner quick-disconnect connection (5).
- J) Valves-to-manifold connections (6).
- K) LP: Regulator hose-to-cylinder connection (7).
- L) LP: Regulator hose-to-regulator connection (8).
- M) NG: Hose-to-quick-disconnect gas line connection (9).
- ⚠ **WARNING: If there is a leak at connections (5, 6, 7, 8 or 9), turn OFF the gas. DO NOT OPERATE THE GRILL. Failure to follow dangers, warnings and cautions contained in this Instruction sheet may cause a fire or an explosion resulting in serious personal injury or death as well as damage to property. Contact the Customer Service Representative in your area using the contact information on our web site. Log onto [www.weber.com](http://www.weber.com).**

When leak checks are complete, turn gas supply OFF at source and rinse connections with water.

**⚠ IMPORTANT: To do a proper leak check, control panel must be off. After checking for leaks, replace control panel, wind deflector, and control knobs.**



# 14 CONTROL PANEL REINSTALLATION

TOOLS NEEDED:  - PHILLIPS

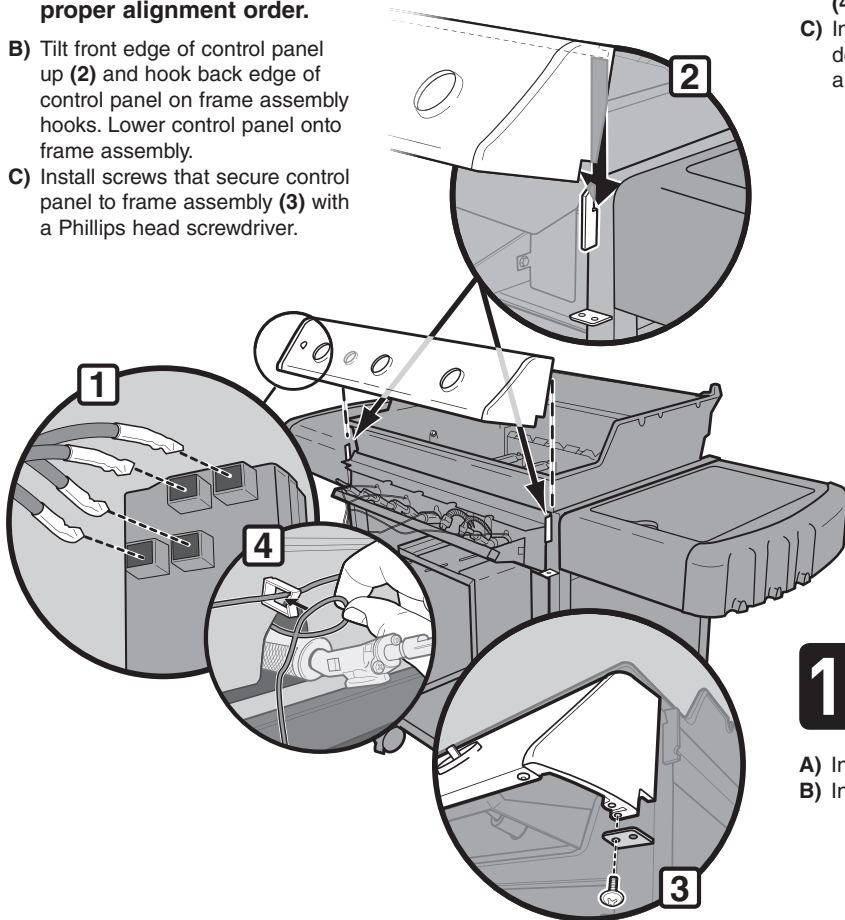
⚠ **IMPORTANT:** To do a proper leak check, control panel must be removed. After checking for leaks reinstall control panel, wind deflector and control knobs.

A) Connect igniter wires to ignition module (1) before installing control panel.


**REASSEMBLY NOTE:** Follow Igniter Module Wire Guide for proper alignment order.

B) Tilt front edge of control panel up (2) and hook back edge of control panel on frame assembly hooks. Lower control panel onto frame assembly.

C) Install screws that secure control panel to frame assembly (3) with a Phillips head screwdriver.



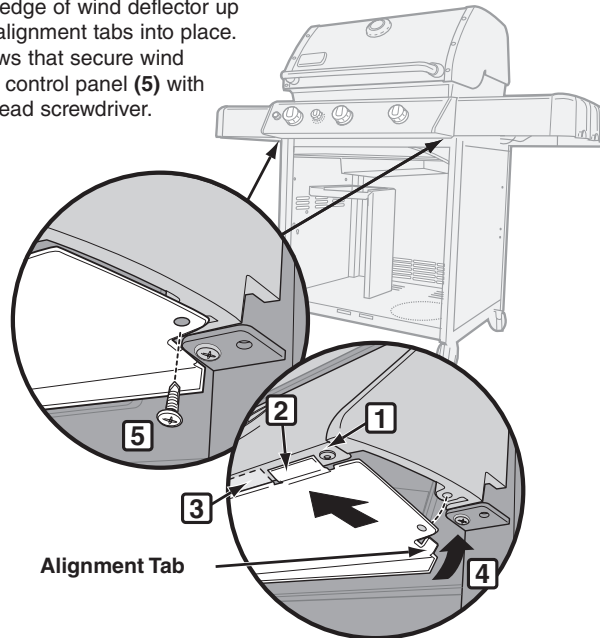
# 15 WIND DEFLECTOR REINSTALLATION

TOOLS NEEDED:  - PHILLIPS

A) Position front edge of wind deflector onto bottom lip of control panel (1). Position both outer short tabs of wind deflector **below** control panel lip (2), while placing inner long tab **above** control panel lip (3). **The bottom lip of control panel will be sandwiched between the wind deflector tabs.**

B) Slide back edge of wind deflector up (4) to lock alignment tabs into place.

C) Install screws that secure wind deflector to control panel (5) with a Phillips head screwdriver.

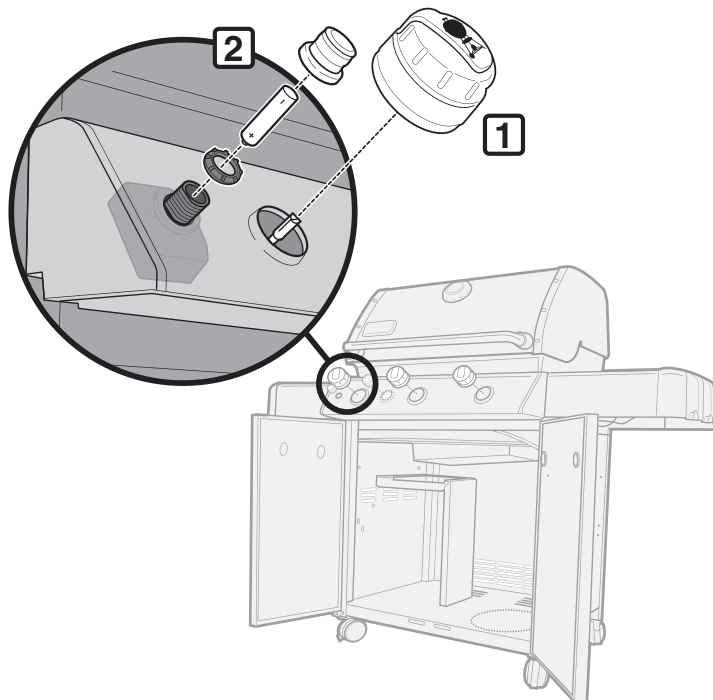


# 16 CONTROL KNOB REINSTALLATION

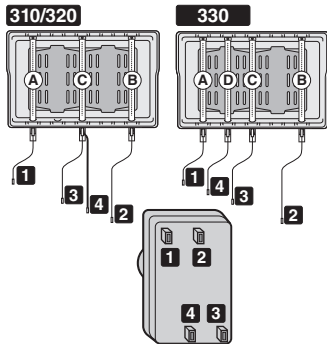
A) Install ALL control knobs (1).

B) Install igniter button and battery (2).

⚠ **IMPORTANT NOTE:** If it has been a year since battery was changed, this would be a good time to replace it.



## IGNITER MODULE WIRE GUIDE 310/320/330



Burner Tube	
Left Burner (A)	
Right Burner (B)	
Center Burner (C)	
Center Burner (D)	
Wire End & Terminal Color	
Black (1)	
Yellow (2)	
Blue (3)	
Green (Ground) (4)	

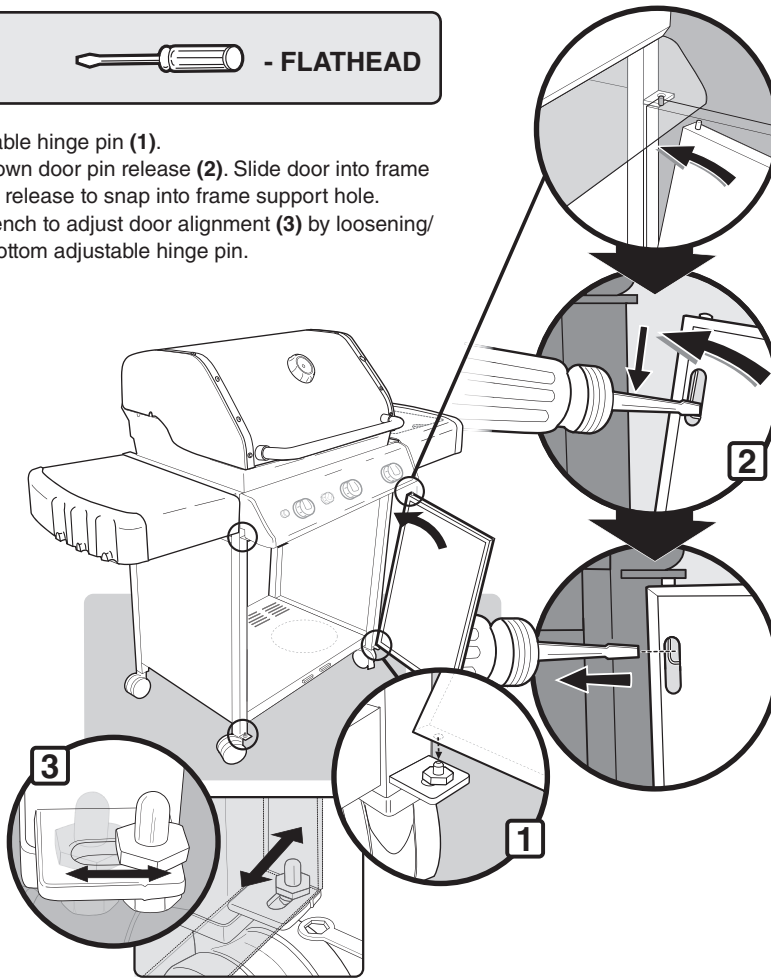
D) Slide igniter wires into igniter wire clips (4).

**IMPORTANT NOTE:** All igniter wires must be installed and supported in igniter wire clips (4) in order for ignition module to function properly.

## TOOLS NEEDED:

 - FLATHEAD

- A) Set door onto bottom adjustable hinge pin (1).
- B) Use a screwdriver to push down door pin release (2). Slide door into frame assembly and allow door pin release to snap into frame support hole.
- C) *If necessary*, use a 7/16" wrench to adjust door alignment (3) by loosening/tightening bolt underneath bottom adjustable hinge pin.



**⚠ WARNING: Make sure all parts are assembled and hardware is fully tightened before operating the grill. Your actions, if you fail to follow this product warning, may cause a fire, an explosion, or structural failure resulting in serious personal injury or death as well as damage to property.**

**⚠ PROPOSITION 65 WARNING: HANDLING THE BRASS MATERIAL ON THIS PRODUCT EXPOSES YOU TO LEAD, A CHEMICAL KNOWN TO THE STATE OF CALIFORNIA TO CAUSE CANCER, BIRTH DEFECTS OR OTHER REPRODUCTIVE HARM.**

**(WASH HANDS AFTER HANDLING THIS PRODUCT.)**

**⚠ WARNING: All repairs to gas carrying, gas burning, igniter or structural components must be performed by an authorized Weber-Stephen Products LLC service technician.**

These parts may be gas carrying, gas burning, igniter or structural components. Please contact Weber-Stephen Products LLC, Customer Service Department for Genuine Weber-Stephen Products LLC replacement part(s) information.

**⚠ WARNING: Do not attempt to make any repair to gas carrying, gas burning, igniter or structural components without contacting Weber-Stephen Products LLC, Customer Service Department. Your actions, if you fail to follow this Product Warning, may cause a fire, an explosion, or structural failure resulting in serious personal injury or death as well as damage to property.**



WEBER-STEPHEN PRODUCTS LLC  
Customer Service Center  
1890 Roselle Road, Suite 308  
Schaumburg, IL 60195

1-800-446-1071 (USA ONLY)  
www.weber.com