

weber    
connect

SMART GRILLING HUB



OWNER'S MANUAL

enGB

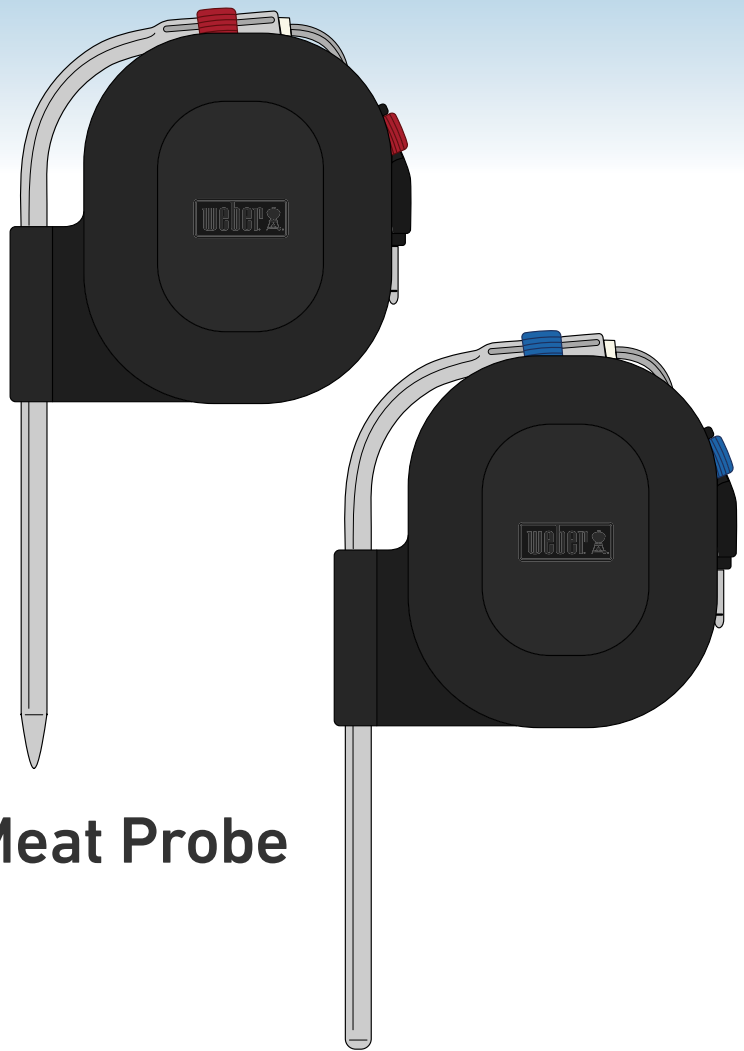
# TABLE OF CONTENTS

<b>Package Contents</b> . . . . .	<b>3</b>
<b>LED Indication Guide</b> . . . . .	<b>4</b>
<b>Quick Start Instructions</b> . . . . .	<b>5</b>
<b>Usage Tips</b> . . . . .	<b>14</b>
<b>Important Information</b> . . . . .	<b>18</b>
Intended Use . . . . .	18
Temperature Probe Use . . . . .	18
Disposal Requirements . . . . .	18
Technical Specifications . . . . .	18
FCC Compliance . . . . .	18
IC Compliance . . . . .	18
IFETEL Compliance . . . . .	18
<b>Safety Information Regarding Batteries</b> . . . . .	<b>19</b>
<b>Declaration of Conformity</b> . . . . .	<b>20</b>

# PACKAGE CONTENTS

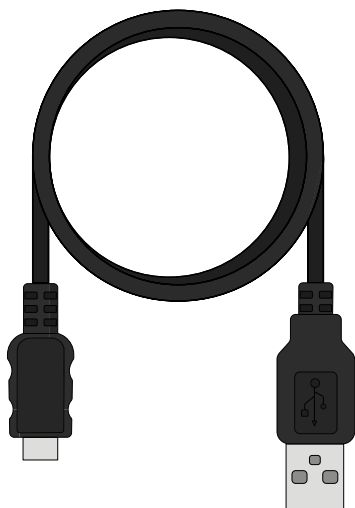


**Weber Connect Smart Grilling Hub**

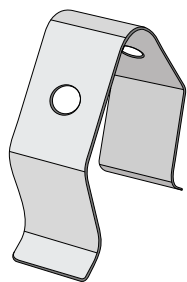


**Meat Probe**

**Ambient Probe**



**Charging Cable**



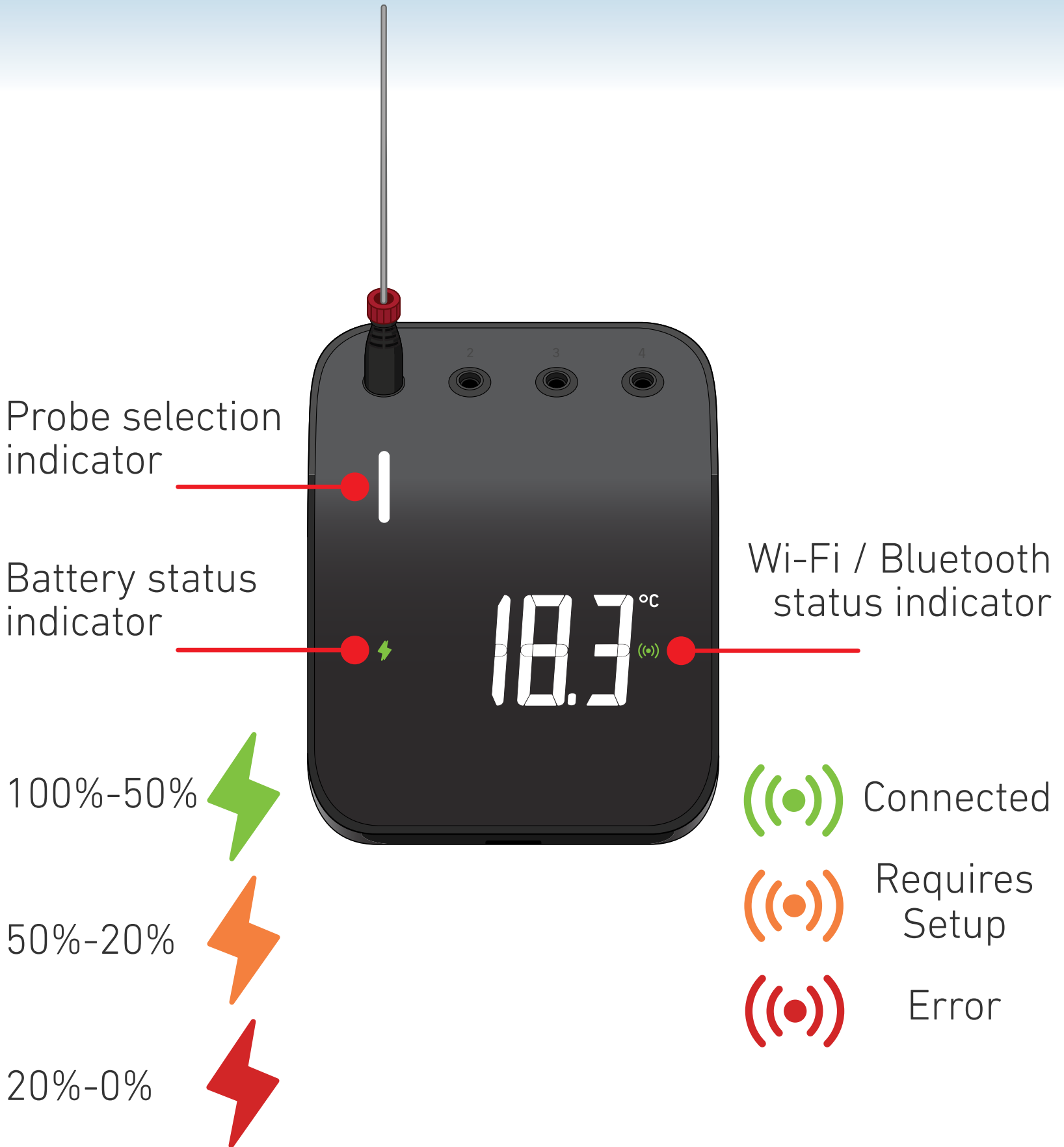
**Ambient Grate Clip**



**Quick Start Guide**

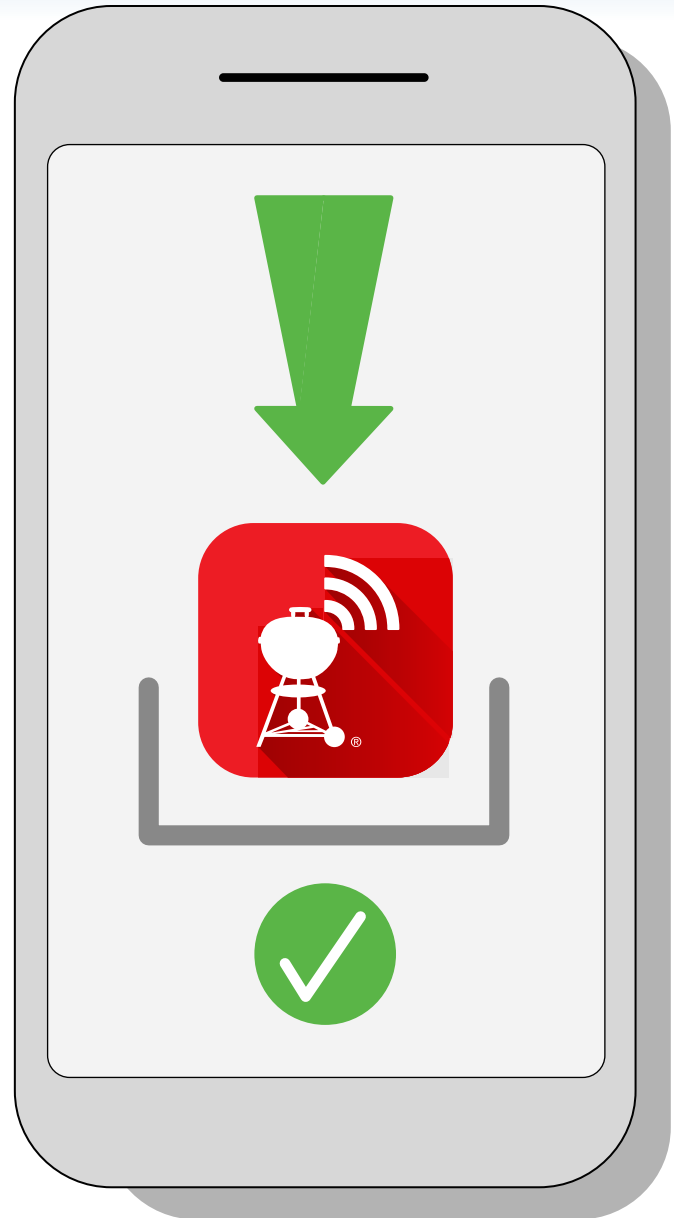


# LED INDICATOR INFORMATION



# QUICK START INSTRUCTIONS

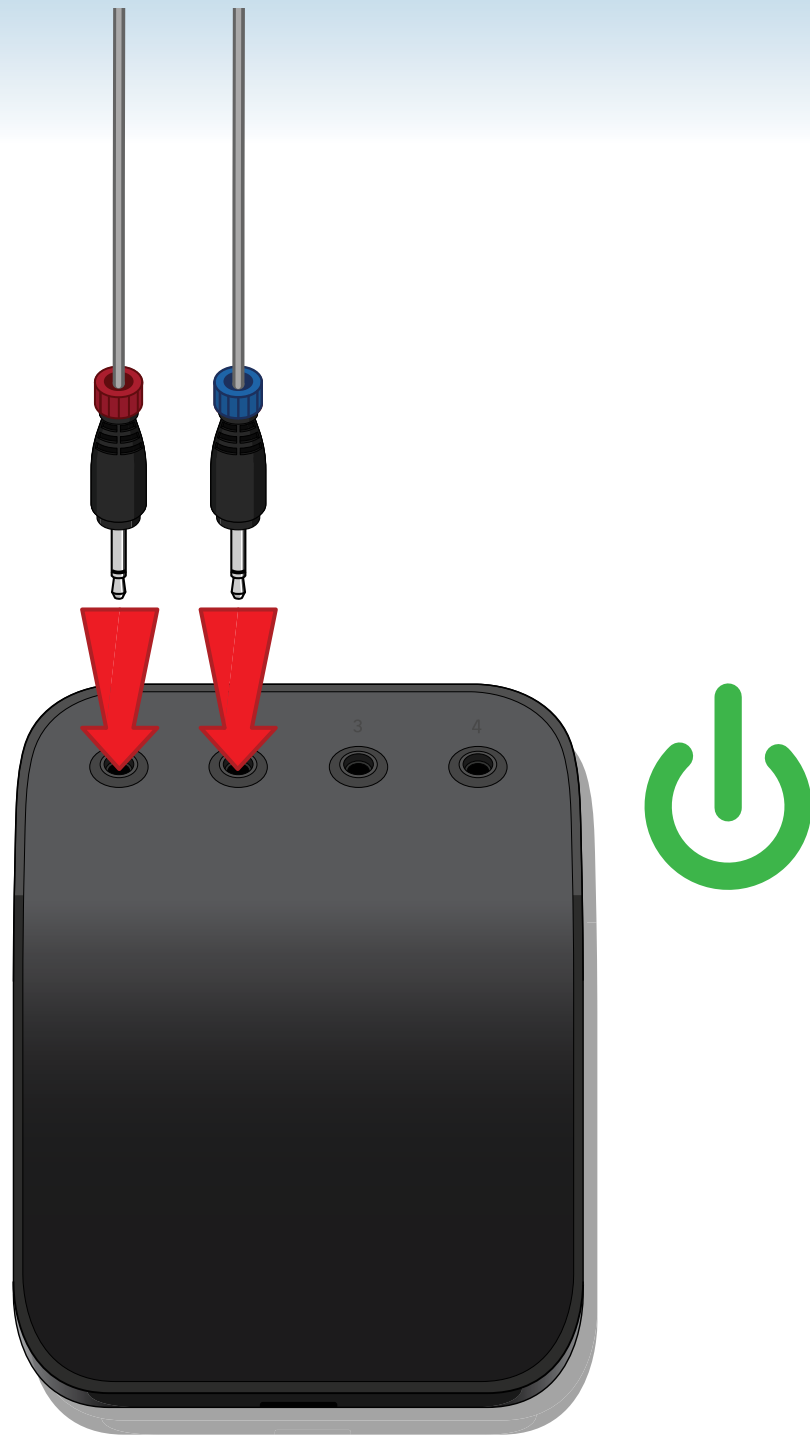
1



Download the Weber Connect App and ensure that wi-fi and Bluetooth have been enabled in your smart device's settings.



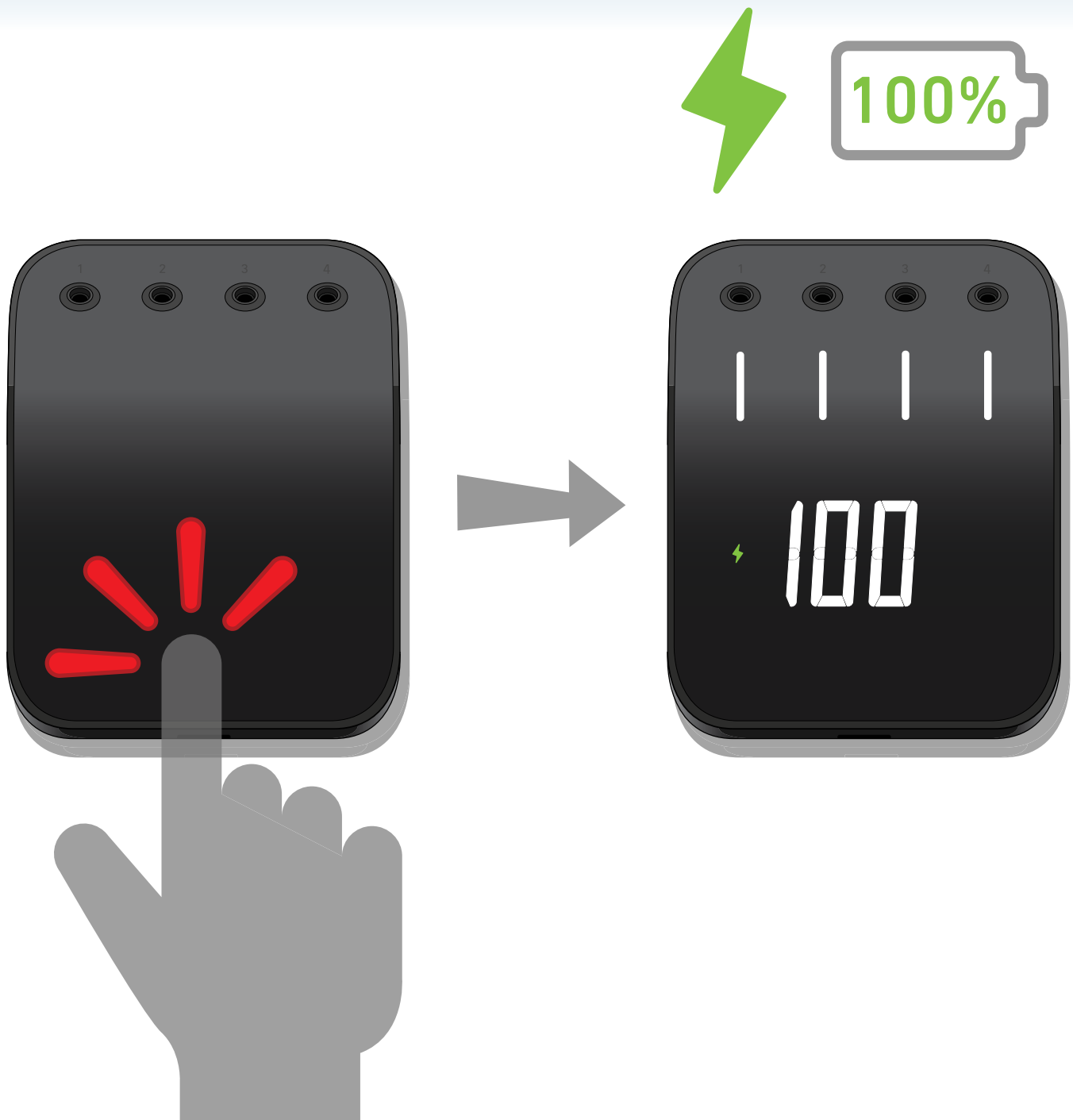
2



To power the unit on, remove the protective plastic and cling coverings. Next, plug one or more probes into your Weber Connect Smart Grilling Hub.



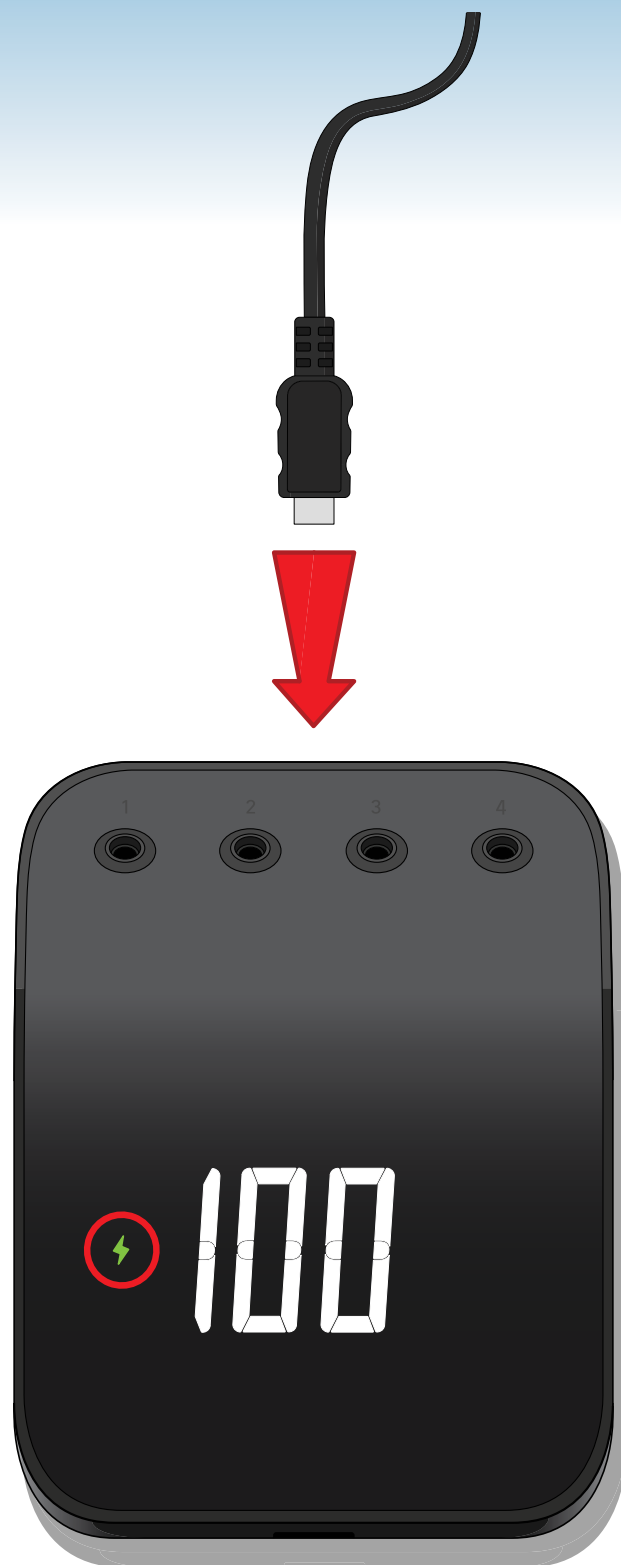
3



To check battery status of your Smart Grilling Hub, press down on device with no probes connected.



4



When required, charge your Weber Connect Smart Grilling Hub until the charge icon illuminates green.





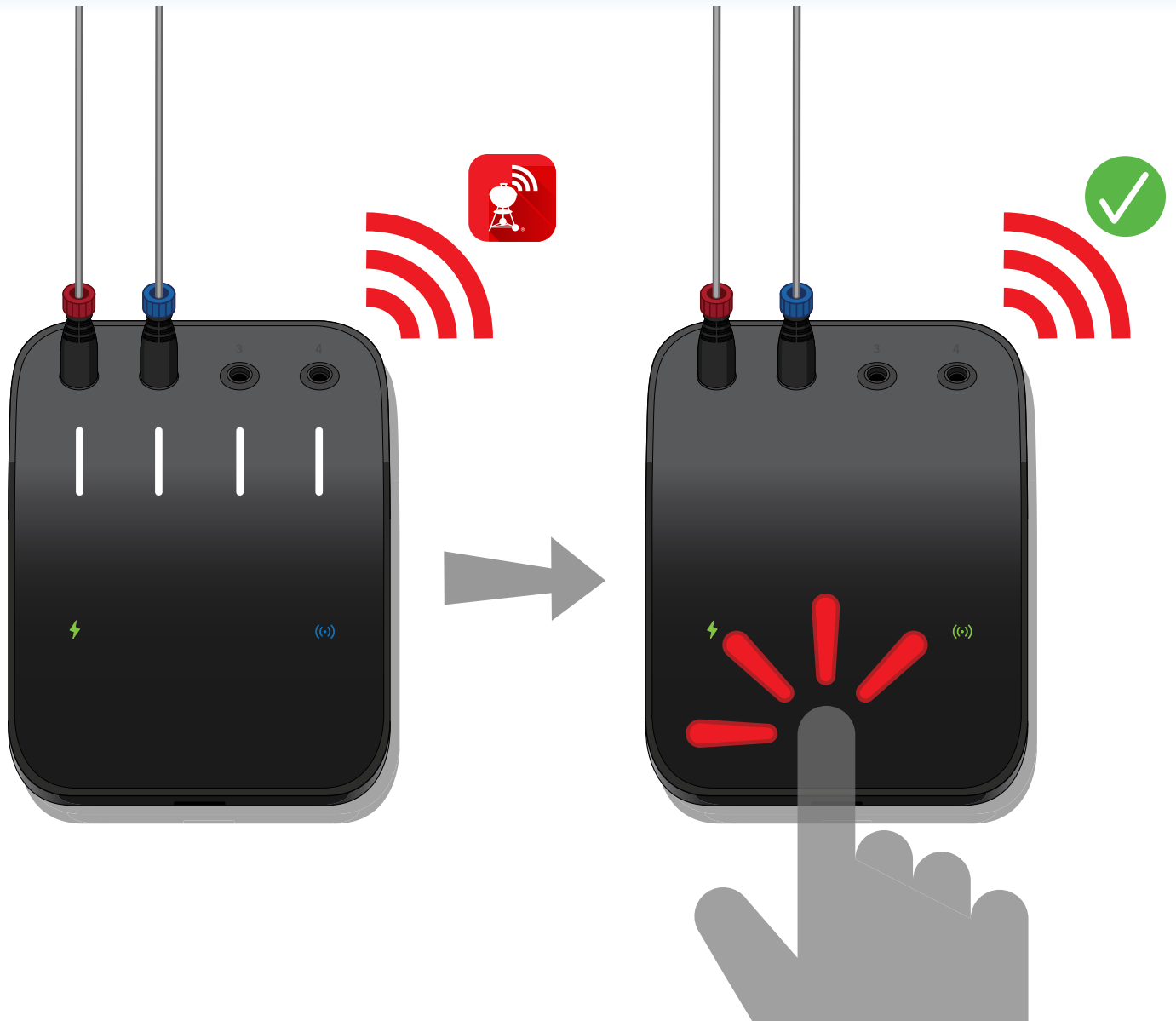
5



Open up the Weber Connect App on your smart device and ensure that the Weber Connect Smart Grilling Hub is within range.



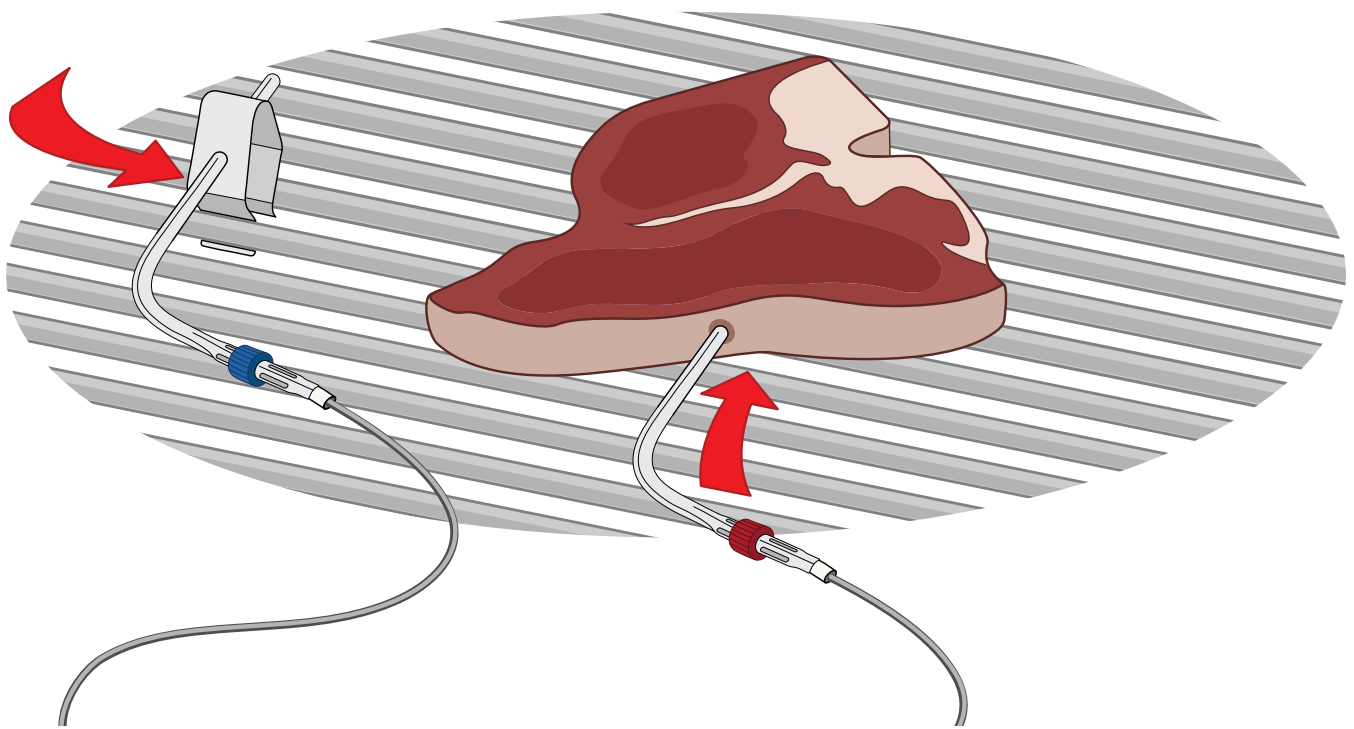
# 6



To finalise the initial pairing with your smart device, press down on your Smart Grilling Hub when the unit displays all four of the probe indicator lights.



# 7

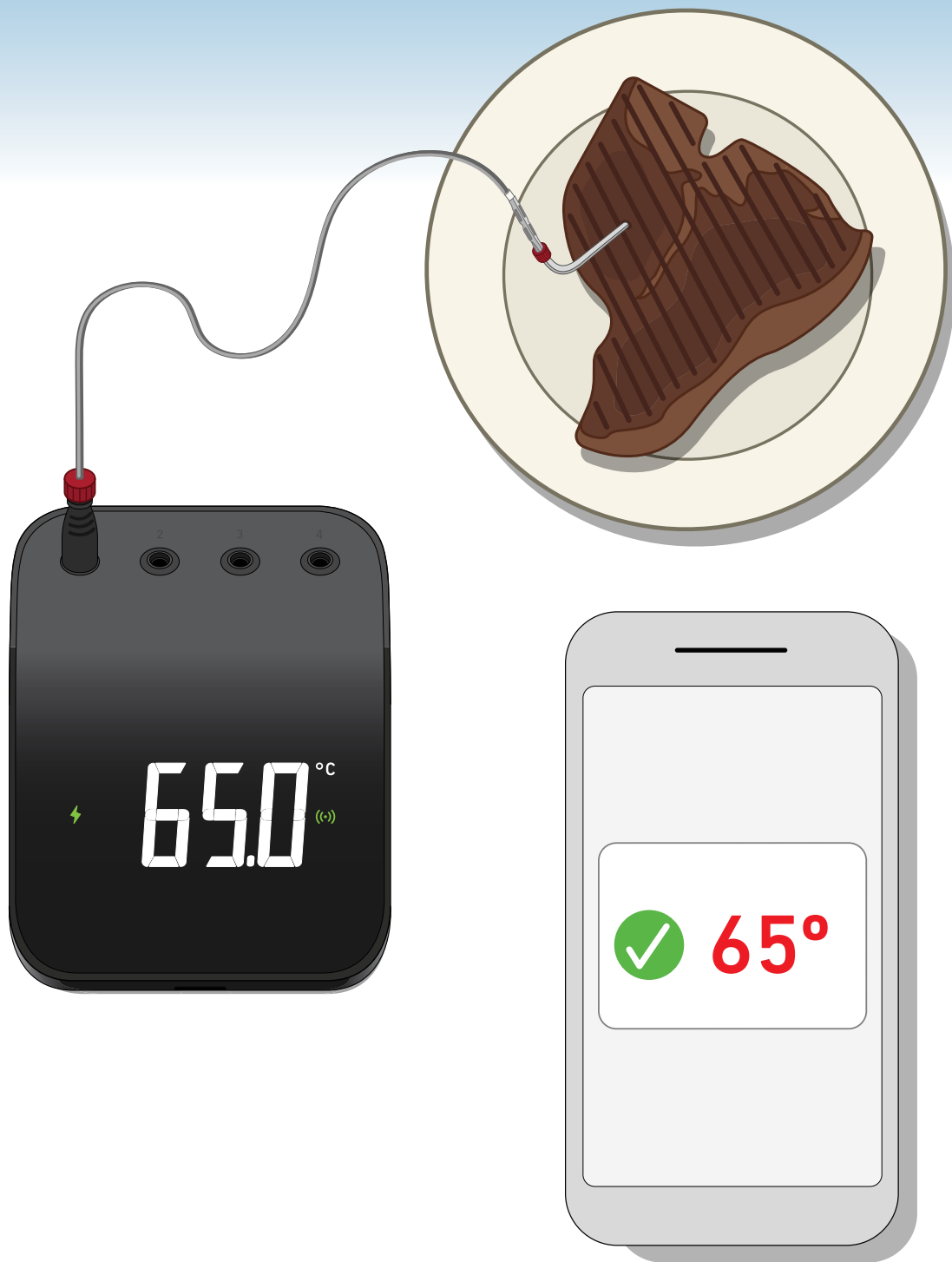


When using meat probes, ensure that the tip of the probe is inserted into the thickest section of the meat, avoiding bones or fat.

When using ambient probes, ensure that the provided grate clip has been properly secured to the cooking surface.



8

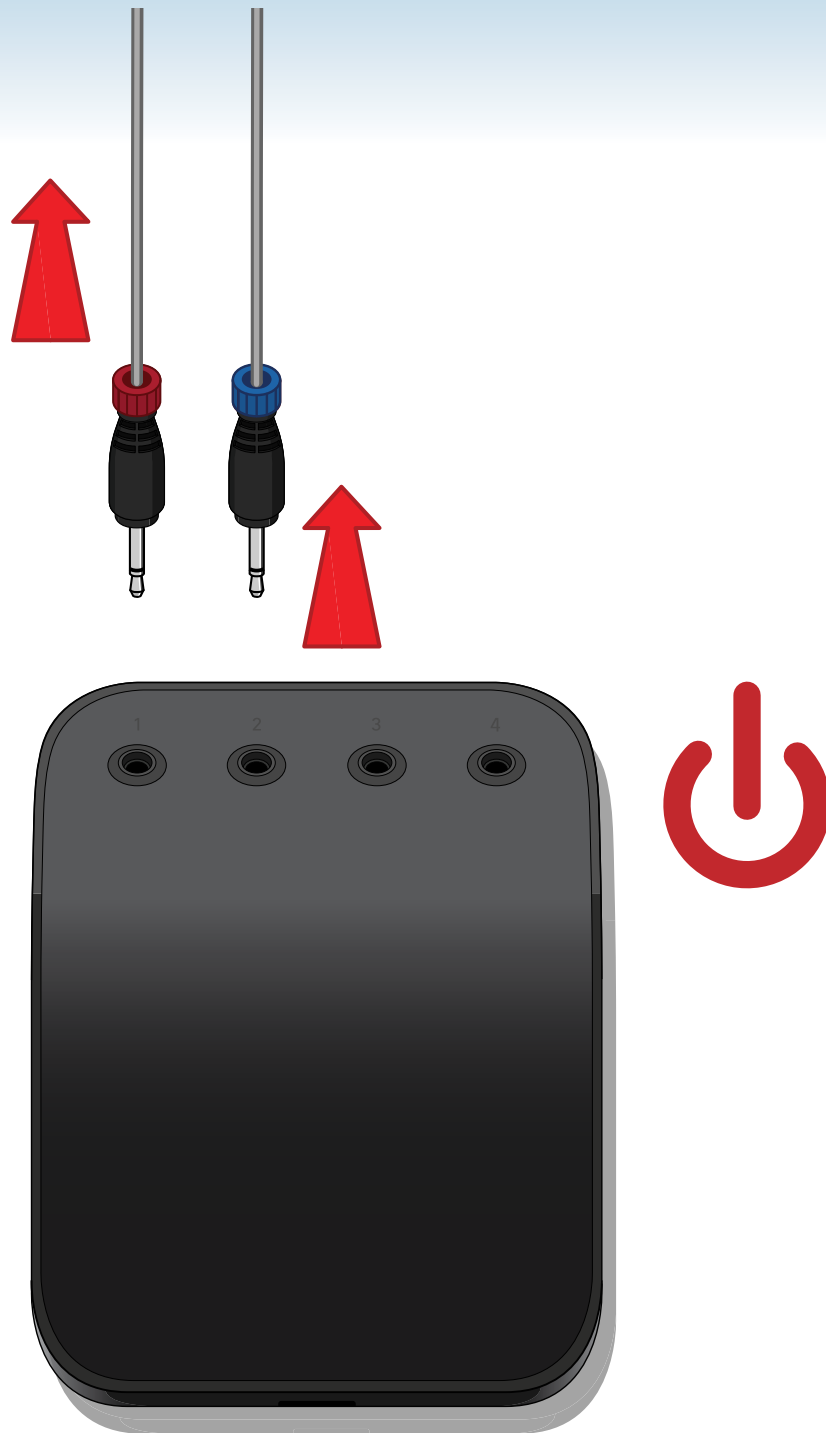


Follow the step-by-step barbecuing instructions in your Weber Connect App.

Enjoy your meal!



9



After using your Smart Grilling Hub, unplug the probes to power off the device and conserve battery life.



# HOT SURFACE WARNING



**Avoid placing the Weber Connect Smart Grilling Hub on hot surfaces such as the lid or hood of your barbecue.**

**Device is rated to 65°C.**



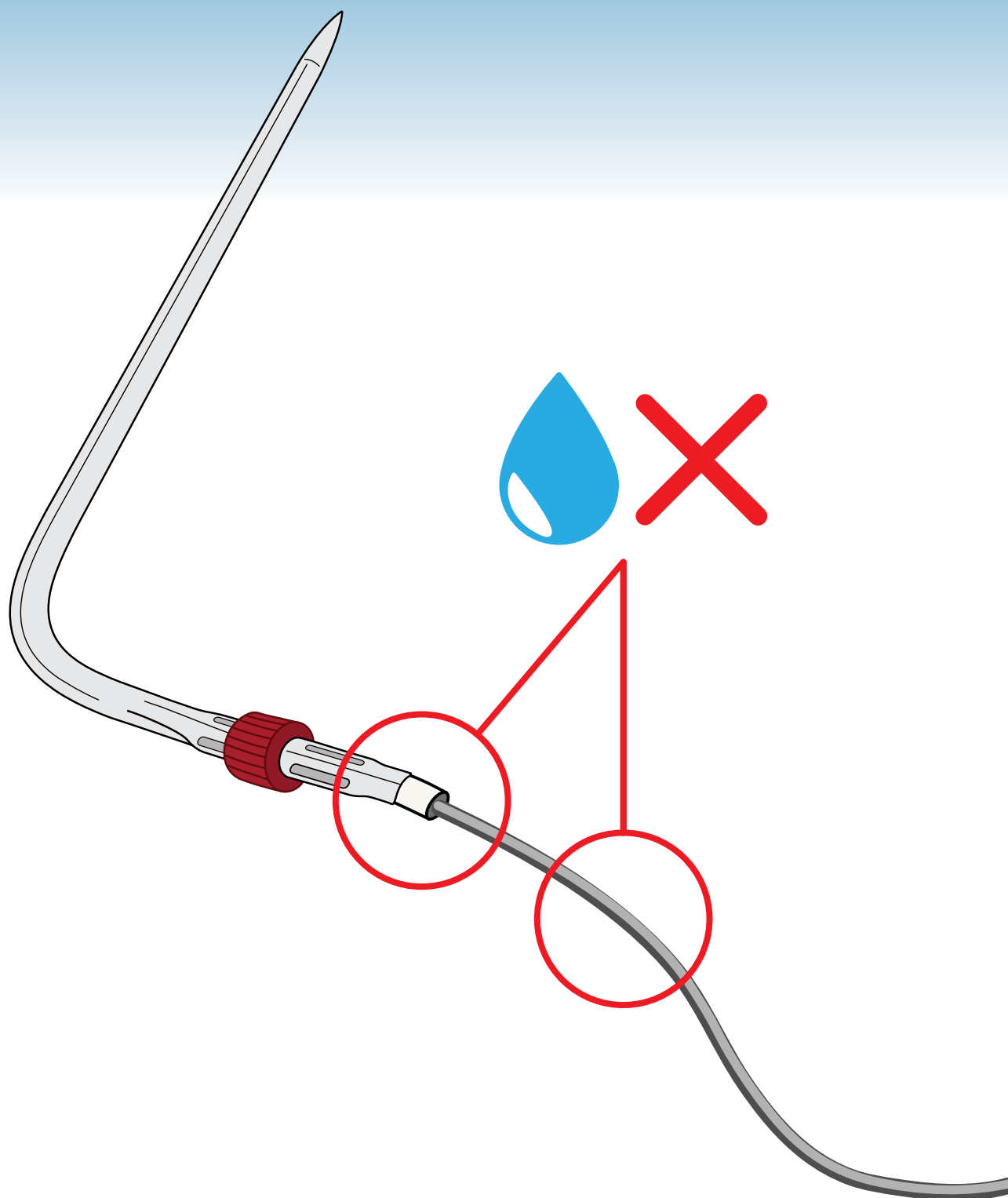
# Device Storage



When it is not in use, store the Weber Connect Smart Grilling Hub at room temperature in a dry place, such as an indoor cupboard or drawer.



# Washing the Probes



When washing Temperature Probes, use caution to avoid exposing the probe wiring and the area where the probe and wire meet to water. Never submerge the probes in water.





# HARD-RESET INSTRUCTIONS



If it is necessary, you can reset the Weber Connect Smart Grilling Hub by inserting a pin or similar item into the **Reset Port** and pressing for a few seconds.



# INTENDED USE

Use this device for measuring and monitoring the temperature of grilled items. Any use other than that described may cause damage. The manufacturer or retailer are not liable for damages arising from improper use



**WARNING: Risk of Injury!** The temperature probes are very sharp. Please be careful when handling probes.



**WARNING: Risk of Burns!** Handling the temperature probes without hand protection will result in severe burns. The coloured probe indicators are not intended to be touched with bare hands while using the barbecue as they are not heat insulated. Please wear heat protective gloves while using this product at all times to avoid being burned.

**Important Note:** When using probes, be sure to route wire where it will not be exposed to flames or temperatures exceeding 380° C. Avoid exposing probes to temperatures below -30° C. Temperatures below -30° C or above 300° C will not display in the app and will cause the probe to disappear from connection.



**WARNING: Battery Disposal!** Never dispose of batteries in an open fire. Always dispose of batteries in accordance with local laws.

**Note:** The Connect Smart Grilling Hub and batteries are not designed to withstand high heat. If the surface is too hot to touch, it's too hot for the Connect Smart Grilling Hub.

**Note:** The device is not to be used by children or persons with reduced physical, sensory or mental capabilities.

**Frequency Range (MHz):** 2402.0 - 2480.0 MHz

**Output Power:** 19.05 dBm

**Declaration of Conformity:** Weber-Stephen Products LLC. hereby declares that the radio equipment of type Connect Smart Grilling Hub is in compliance with Directive 2014/53/EU. The full text of the EU declaration of conformity is available at the following URL:

# BATTERY SAFETY INFORMATION



## Important Safety Instructions and Warnings for Lithium Ion (Li-Ion) Batteries

### General Guidelines and Warnings

- You must read these safety instructions and warnings before using or charging your Weber Connect Smart Grilling Hub.
- Li-ion batteries are volatile. Failure to read and follow the below instructions may result in fire, personal injury and damage to property if charged or used improperly.
- Li-Ion battery packs may explode and cause fire if misused or defective.
- Use only the charger supplied with your Weber Connect Smart Grilling Hub. Do not use a NiMH or NiCd charger. Failure to do so may cause fire, which may result in personal injury and property damage.
- Do not charge when room temperature is below 32F(0C) or above 113F (45C).
- If at any time you witness your Weber Connect Smart Grilling Hub starting to smoke while charging, discontinue the charging process immediately, disconnect the battery and observe it in a safe place for approximately 15 minutes. Observation should occur in a safe area outside of any building or vehicle and away from any combustible material.
- Never drop the unit.
- Do not charge the battery in presence of flammable liquids or gases.
- Do not expose the charger to rain or snow.
- Children should be supervised to ensure they do not play with the battery charger.
- Use caution to avoid puncture of the cell. Puncture of cells may cause a fire.

### Storage & Transportation

- Store unit at room temperature for best results.
- Do not expose battery pack to direct sunlight / heat for extended periods of time. Any exposure to heat can cause significant damage or fatal injury.
- Storing battery at temperatures greater than 140F (60C) for extended periods of time (more than 2 hours) may cause damage to battery and possible fire.

### Voltage, Capacity, Capacity in Watts:

- Voltage: 3.7V
- Capacity: 3.2Ah
- Capacity in Watts: 11.7 Wh

# Declaration of Conformity - Connect Smart Grilling Hub

1. **Brand Name:** Weber  
**Model Name:** Connect Smart Grilling Hub  
**Model Number:** 3202  
**Product Description:** WiFi/BLE Wireless Cooking Thermometer
2. **Manufacturer:** Weber-Stephen Products LLC. 1415 S. Roselle Road, Palatine IL, 60067, USA
3. We, company Weber-Stephen Products LLC, located at 1415 S Roselle Road, Palatine IL, 60067, USA, issue this declaration of conformity under our sole responsibility.
4. **Object of the Declaration:** Weber Connect Smart Grilling Hub, which contains a transmitter, rechargeable Lithium Ion battery pack, two probes, one charging cable and one ambient probe clip
5. The object of the declaration described above is in conformity with the relevant Union harmonisation legislation:

**Directive 2014/53/EU** Radio Equipment Directive (RED):

**Safety/Health**

Directive 2012/19/EU Waste Electrical and Electronic Equipment (WEEE)

Directive 2011/65/EU Restriction of Hazardous Substances in EEE (RoHS 2)

Regulation No 1907/2006 Registration, Evaluation, Authorisation and Restriction of Chemicals (REACH)

Regulation (EC) No 1935/2004 Materials and Articles Intended to Come into Contact with Food, Council of Europe Resolution CM/Res (2013)9 on Metals and Alloys Used in Food Contact Materials and Articles

6. **Harmonised standards:**

**Safety/Health:**

EN 62311:2008

EN 62368-1:2014+A11:2017

**EMC:**

DRAFT EN 301 489-17 V3.2.0 2017-03

DRAFT EN 301 489-1 V2.2.0 2017-03

**Radio:**

EN 300 328 V2.1.1 2016-11

7. **N/A**

8. The object of this declaration functions using software and a smart device-enabled app to which the software connects.
9. Signed for and on behalf of Weber-Stephen Products LLC, Palatine, IL USA on 12 November 2019



Ralph N. Ten Bruin, Global Director of Regulatory Affairs



Manufacturer:

**Weber-Stephen Products LLC**  
1415 S. Roselle Road  
Palatine, IL 60067-6266  
USA

Importer:

**Weber-Stephen Products (EMEA) GmbH**  
Leipziger Straße 124  
10117 Berlin  
Tel: (+49) 307554184-0

**Weber-Stephen France SAS**

C.S. 80322 - 95617,  
Cergy Pontoise Cedex, FRANCE  
TEL: (+33) 810 19 32 37  
service.consommateurs@Weberstephen.com  
FR, ES, PT, IT, BE, LU, NL

**Weber-Stephen Nordic ApS**

Bøgildsmindevej 23, DK-9400,  
Nørresundby, DANMARK  
TEL: (+45) 99 36 30 10  
info@Weberstephen.dk  
DK, SE, FI, NO, LV, EE, LT

**Weber-Stephen Products (U.K.) Limited**

10th Floor - Metro Building, 1 Butterwick,  
Hammersmith, London W6 8DL, UK  
TEL: +44 (0) 203 630 1500  
customerserviceuk@Weberstephen.com  
GB, IE

**Weber-Stephen Deutschland GmbH**

Rheinstrasse 194, 55218  
Ingelheim, DEUTSCHLAND  
TEL: (+49) 6132 8999 0  
info-de@Weberstephen.com  
DE, AT, CH, HU, CZ, SK, RO, RU, HR, BG,  
GR, SI, UA, CY, AE, KW, QA, BH, SA, EG

**Weber-Stephen Polska Sp. z o.o.**

Ul. Minerska 29 lok.1, 04-506  
Warszawa, POLSKA  
TEL. (+48) 22 392 04 69  
info-pl@Weberstephen.com  
PL

**Weber Stephen Turkey Ev ve Bahçe**

Malzemeleri Ticaret Ltd. Şti  
İstoç Töptancılar Çarşısı C Blok 4. Kat No: 31  
34219 Mahmutbey/Güneşli / İstanbul  
Tel: +90 212 659 64 80 Pbx  
Fax: +90 212 659 64 83  
TR

The Bluetooth® word mark and logos are registered trademarks owned by Bluetooth SIG, Inc. and any use of such marks by Weber-Stephen Products LLC is under licence. Other trademarks and trade names are those of their respective owners.

